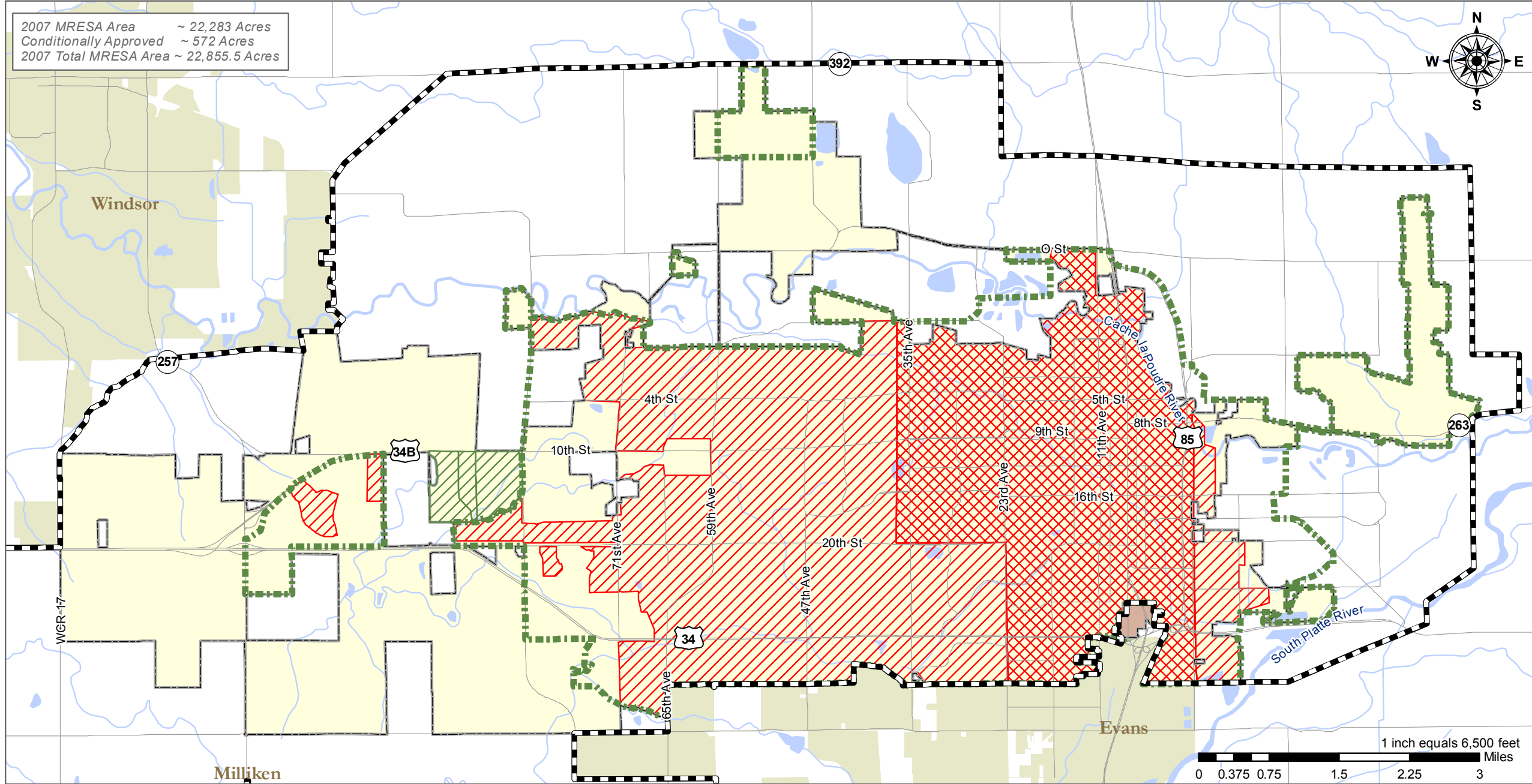
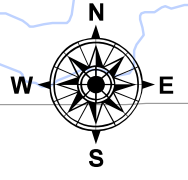


2007 MRESA Area ~ 22,283 Acres
 Conditionally Approved ~ 572 Acres
 2007 Total MRESA Area ~ 22,855.5 Acres



2020 Urban Growth & Service Area

2007 MRESA

File: CIP07Overview.mxd
 Created By: Planning Department, GIS
 Date: 07/13/07

Long Range Expected Growth Area (LREGA)

- Area within which community growth is expected for the next 20+ years and which encompasses all other growth and service areas.

Mid Range Expected Service Area (MRESA)

- Area with which adequate public facilities will be available with anticipated growth and implementation of 5 year Capital Improvements Program.

Municipal Services Suitability Area (MSSA)

- Full range of adequate public facilities as of January, 2007. (9,271 Acres)

Central Municipal Services Suitability Area

- Full range of adequate public facilities at time of installation. (6,240 Acres)

- Conditionally approved as of January 2007.