



MONTHLY FINANCIAL REPORT

November, 2011 Year-to-Date

GENERAL FUND

	Revenue	Expenditures	Net Impact	% Variance	Page
General Fund Revenue vs Expenditures	\$ 59,426,597	\$54,181,213	\$ 5,245,384	8.8% ↑	2
	YTD Budget	YTD Actual	Variance	% Variance	Page
General Fund Revenue Analysis	\$ 54,532,540	\$59,426,597	\$ 4,894,057	9.0% ↑	2
General Fund Expenditures by Month/Dept	\$ 57,496,596	\$54,181,213	\$ 3,315,383	5.8% ↑	3

REVENUE

	YTD Budget	YTD Actual	Variance	% Variance	Page
Sales Tax	\$ 33,233,928	\$37,762,788	\$ 4,528,860	13.6% ↑	4-6
Retail Sales Tax	\$ 30,294,638	\$33,449,940	\$ 3,155,302	10.4% ↑	7
Sales Tax on Building Permits	\$ 506,890	\$ 885,613	\$ 378,723	74.7% ↑	7
Use Tax	\$ 922,800	\$ 1,669,176	\$ 746,376	80.9% ↑	8
Auto Tax	\$ 1,462,000	\$ 1,677,234	\$ 215,234	14.7% ↑	8
Penalties & Interest	\$ 47,600	\$ 80,825	\$ 33,225	69.8% ↑	9
Lodging Tax	\$ 202,560	\$ 284,388	\$ 81,828	40.4% ↑	9
Property Tax	\$ 8,891,292	\$ 8,822,466	\$ (68,826)	-0.8% ↔	10
Franchise Fees	\$ 3,520,761	\$ 3,443,073	\$ (77,688)	-2.2% ↓	10

BUDGET PERFORMANCE

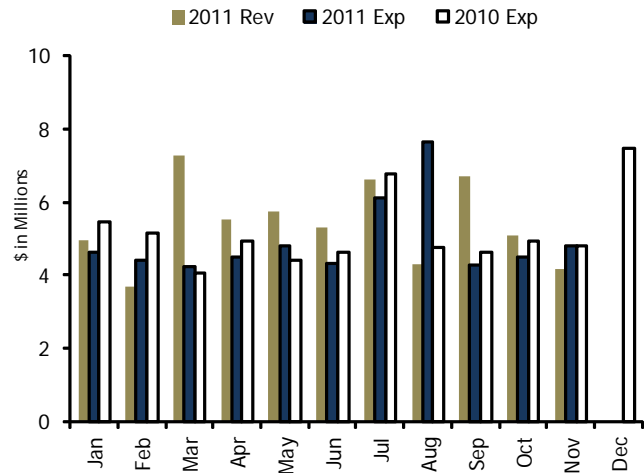
Fund Balances	11
Operating Budget Performance	12-27

Performance Indicators: (Budget to Actual)

- ↑ Positive variance >2% compared to seasonal trends.
- ↔ Neutral variance <2% and >-2% compared to seasonal trends.
- ↓ Negative variance <-2% compared to seasonal trends.

GENERAL FUND REVENUE VS EXPENDITURES

	2011 Revenue	2011 Expenditures	Monthly Variance
Jan	\$ 4,951,640	\$ 4,643,488	\$ 308,152
Feb	3,685,846	4,394,252	(708,406)
Mar	7,287,712	4,220,939	3,066,773
Apr	5,538,672	4,487,902	1,050,770
May	5,747,478	4,791,009	956,469
Jun	5,319,459	4,301,036	1,018,423
Jul	6,627,591	6,119,411	508,180
Aug	4,288,534	7,659,378	(3,370,844)
Sep	6,693,303	4,256,263	2,437,040
Oct	5,107,490	4,490,250	617,240
Nov	4,178,872	4,817,285	(638,413)
Dec			
YTD Total	\$59,426,597	\$ 54,181,213	\$ 5,245,384

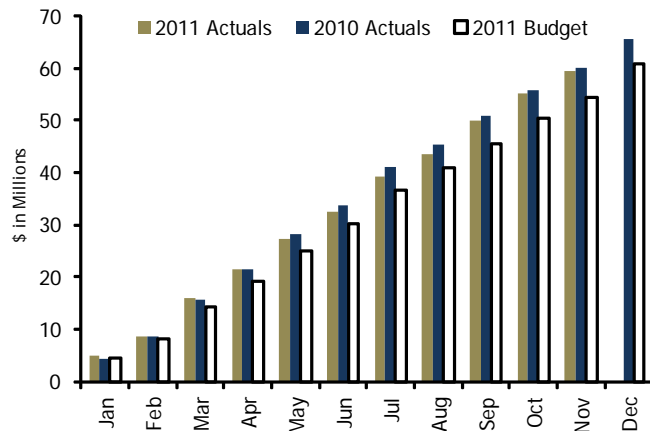


↑ During November, expenditures exceeded revenue by \$638,413. Of the \$4,178,872 in revenue for November, \$2,823,453 was the general fund share of sales and use tax collections, \$166,627 was property tax, \$26,675 was intergovernmental revenue, \$159,268 was fines and forfeits, and \$524,218 was charges for services. Year to date revenue in the general fund exceeds expenditures by \$5,245,384.

Note: March, May and July are the largest months for property tax revenue since the deadlines for paying property taxes at the County are February, April and June. The City receives its share of property taxes the month after the payment is received by the County.

GENERAL FUND REVENUE ANALYSIS

	2011	2010	Variance	% Var
Jan	\$ 4,951,640	\$ 4,411,378	\$ 540,262	12.2%
Feb	3,685,846	4,305,919	(620,073)	-14.4%
Mar	7,287,712	6,885,844	401,868	5.8%
Apr	5,538,672	5,900,306	(361,634)	-6.1%
May	5,747,478	6,728,538	(981,060)	-14.6%
Jun	5,319,459	5,645,716	(326,257)	-5.8%
Jul	6,627,591	7,281,130	(653,539)	-9.0%
Aug	4,288,534	4,230,546	57,988	1.4%
Sep	6,693,303	5,546,766	1,146,537	20.7%
Oct	5,107,490	4,770,547	336,943	7.1%
Nov	4,178,872	4,482,773	(303,901)	-6.8%
Dec				
YTD Total	\$59,426,597	\$ 60,189,463	\$ (762,866)	-1.3%

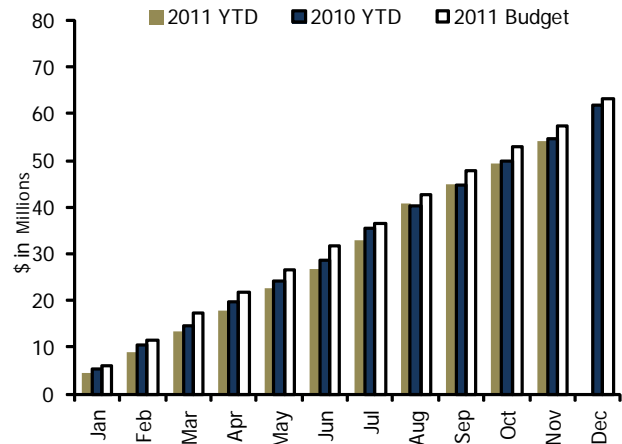


↑ November 2011 revenue was 6.8% or \$303,901 less than November 2010, and year to date revenue is 9.0% or \$4,894,057 more than budgeted revenue of \$54,532,540.

There was an decrease of \$500,000 in intergovernmental agreements in general fund when comparing November 2011 to November 2010 due to the shifting of Public Safety Combined Service to a separate fund in 2011. An increase of \$176,000 was due to the following: an increase in property taxes of \$110,000 and an increase of \$66,000 due to the combining of the Union Colony Fire Rescue Authority and the City of Greeley which results in a portion of the payment for services by Western Hill Fire Protection District previously going to UCFRA now being reported in the General fund.

GENERAL FUND EXPENDITURES BY MONTH

	2011	2010	Variance	% Var
Jan	\$ 4,643,488	\$ 5,440,340	\$ (796,852)	-14.6%
Feb	4,394,252	5,149,175	(754,923)	-14.7%
Mar	4,220,939	4,058,956	161,983	4.0%
Apr	4,487,902	4,930,879	(442,977)	-9.0%
May	4,791,009	4,423,617	367,392	8.3%
Jun	4,301,036	4,606,367	(305,331)	-6.6%
Jul	6,119,411	6,773,572	(654,161)	-9.7%
Aug	7,659,378	4,774,543	2,884,835	60.4%
Sep	4,256,263	4,624,275	(368,012)	-8.0%
Oct	4,490,250	4,937,338	(447,088)	-9.1%
Nov	4,817,285	4,787,466	29,819	0.6%
Dec				
YTD Total	\$54,181,213	\$ 54,506,528	\$ (325,315)	-0.6%



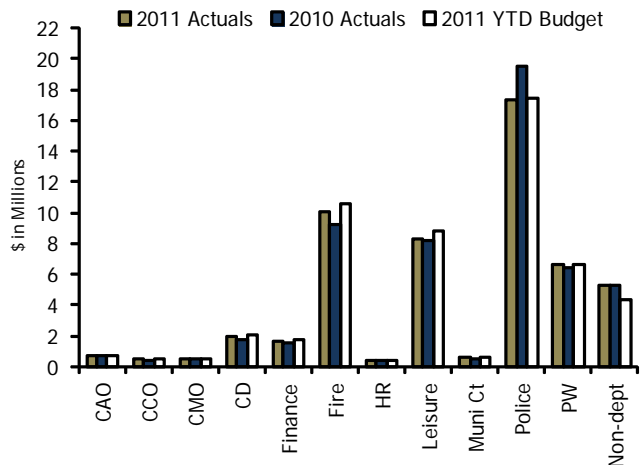
↑ During November 2011, expenditures increased \$29,819 or 0.6% from November 2010. Year to date expenditures are \$3,315,383 or 5.8% less than the year to date budget.

Regular overtime increased by \$59,000 and gas/diesel charges decreased about \$12,000 when compared to November 2010. Seasonal salaries decreased by \$11,000 in November 2011 when compared to November 2010.

GENERAL FUND YTD EXPENDITURES BY DEPARTMENT

	2011	2010	Variance	% Var
CAO	\$ 743,835	\$ 716,349	\$ 27,486	3.8%
CCO	506,989	456,931	50,058	11.0%
CMO	557,018	507,906	49,112	9.7%
Comm Dev	1,963,568	1,799,633	163,935	9.1%
Finance	1,641,367	1,529,334	112,033	7.3%
Fire	10,109,108	9,203,294	905,814	9.8%
HR	458,414	390,008	68,406	17.5%
Leisure	8,347,719	8,167,900	179,819	2.2%
Muni	619,021	540,563	78,458	14.5%
Police	17,291,961	19,483,705	(2,191,744)	-11.2%
Public Works	6,665,234	6,441,787	223,447	3.5%
Non-dept	5,276,979	5,269,118	7,861	0.1%
Totals	\$54,181,213	\$ 54,506,528	\$ (325,315)	-0.6%

*Includes operating transfers. Partnering agencies, insurance, and computer chgs.

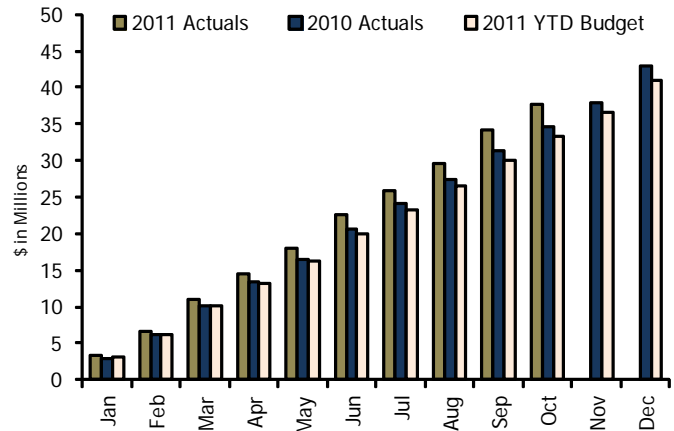


↑ Expenditures in some departments are up compared to 2010 primarily due to the re-allocation of computer user charges and liability insurance from non-departmental to the individual departments. Police is down due to the transfer of Police communications, computer services, and records & identification to the new fund, Public Safety Combined Services.

SALES & USE TAX SUMMARY BY MONTH*

	2011	2010	Variance	% Var
Jan	\$ 3,288,351	\$ 3,008,969	\$ 279,382	9.3%
Feb	3,371,899	3,121,884	250,015	8.0%
Mar	4,427,918	3,911,345	516,573	13.2%
Apr	3,338,809	3,259,538	79,271	2.4%
May	3,600,015	3,268,104	331,911	10.2%
Jun	4,477,381	4,009,585	467,796	11.7%
Jul	3,459,859	3,450,918	8,941	0.3%
Aug	3,718,643	3,433,270	285,373	8.3%
Sep	4,478,588	3,923,870	554,718	14.1%
Oct	3,601,325	3,204,003	397,322	12.4%
Nov				
Dec				
YTD Total	\$37,762,788	\$ 34,591,486	\$ 3,171,302	9.2%

*Sales tax collections are for sales in prior month



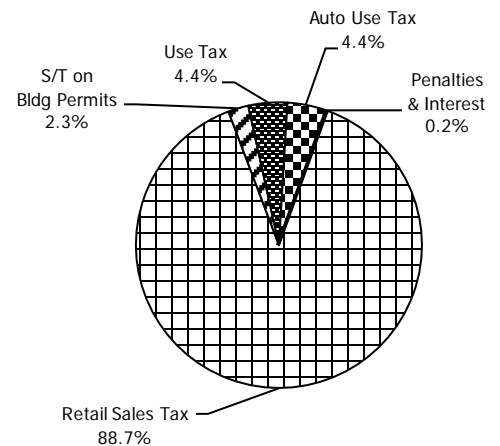
↑ Total sales and use tax collections in November 2011 for October 2011 sales experienced a 12.4% increase compared to sales and use tax collections in November 2010 for October 2010 sales. Total sales and use tax collections increased \$397,322 from \$3,204,003 in October 2010 to \$3,601,325 for October 2011.

Note: The City sales and use tax rate is a 3.46% tax on the retail sales of various goods and commodities including retail sales, building permits, use tax, automobile use tax, and penalties and interest. It represents approximately 48% of all revenue budgeted for the General Fund. Budgeted sales and use tax revenue by month is based on allocating the current year estimate based on monthly collections in prior years.

SALES & USE TAX BY CATEGORY

The following is a breakdown of year to date sales and use tax by category that were collected through November:

	2011	2010	Variance	% Var
Retail Sales Tax	\$ 33,449,940	\$ 30,613,706	\$ 2,836,234	9.3%
Sales Tax on Building Permits	885,613	1,048,409	(162,796)	-15.5%
Use Tax	1,669,176	1,358,776	310,400	22.8%
Auto Use Tax	1,677,234	1,506,588	170,646	11.3%
Penalties & Interest	80,825	64,007	16,818	26.3%
Totals	\$ 37,762,788	\$ 34,591,486	\$ 3,171,302	9.2%

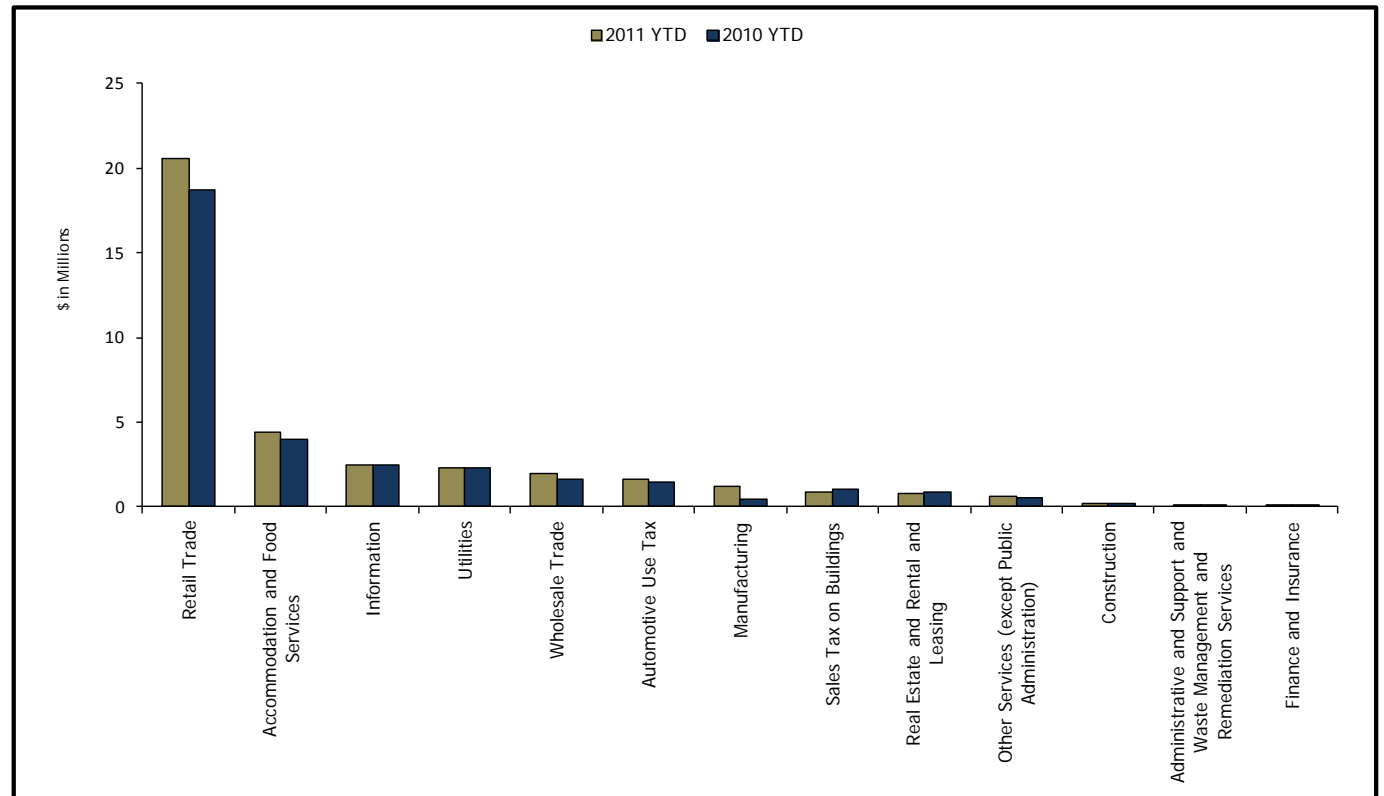


↑ As a whole, year to date sales and use tax is up 9.2% from 2010. Categories show a variance ranging from -15.5% to 26.3%. The following sections describe the variances in each category in greater detail.

SALES TAX COMPARISON BY NAICS CODES

The table below represents total sales and use tax collected by the City of Greeley summarized by NAICS (North American Industry Classification System) codes.

Description	2011	2010	Variance	% Var
Retail Trade	\$ 20,591,496	\$ 18,699,661	\$ 1,891,836	10.1%
Accommodation and Food Services	4,420,847	4,031,893	388,954	9.6%
Information	2,462,966	2,466,776	(3,809)	-0.2%
Utilities	2,336,081	2,323,037	13,045	0.6%
Wholesale Trade	1,956,787	1,641,569	315,218	19.2%
Automotive Use Tax	1,677,233	1,506,588	170,645	11.3%
Manufacturing	1,192,242	450,848	741,394	164.4%
Sales Tax on Buildings	885,613	1,048,407	(162,795)	-15.5%
Real Estate and Rental and Leasing	780,963	884,781	(103,818)	-11.7%
Other Services (except Public Administration)	609,301	585,820	23,481	4.0%
Construction	175,691	172,419	3,271	1.9%
Administrative and Support and Waste Management and Remediation Services	160,610	127,597	33,014	25.9%
Finance and Insurance	96,907	113,204	(16,297)	-14.4%
Professional, Scientific, and Technical Services	85,135	85,448	(313)	-0.4%
Health Care and Social Assistance	81,170	98,634	(17,464)	-17.7%
Educational Services	70,057	67,353	2,704	4.0%
Mining	64,487	130,311	(65,824)	-50.5%
Arts, Entertainment, and Recreation	51,125	55,970	(4,845)	-8.7%
Miscellaneous	46,867	82,022	(35,156)	-42.9%
Agriculture, Forestry, Fishing and Hunting	11,022	11,294	(272)	-2.4%
Transportation and Warehousing	5,201	5,948	(747)	-12.6%
Public Administration	808	1,172	(364)	-31.1%
Management of Companies and Enterprises	178	733	(555)	-75.8%
Grand Total	\$ 37,762,788	\$ 34,591,486	\$ 3,171,302	9.2%

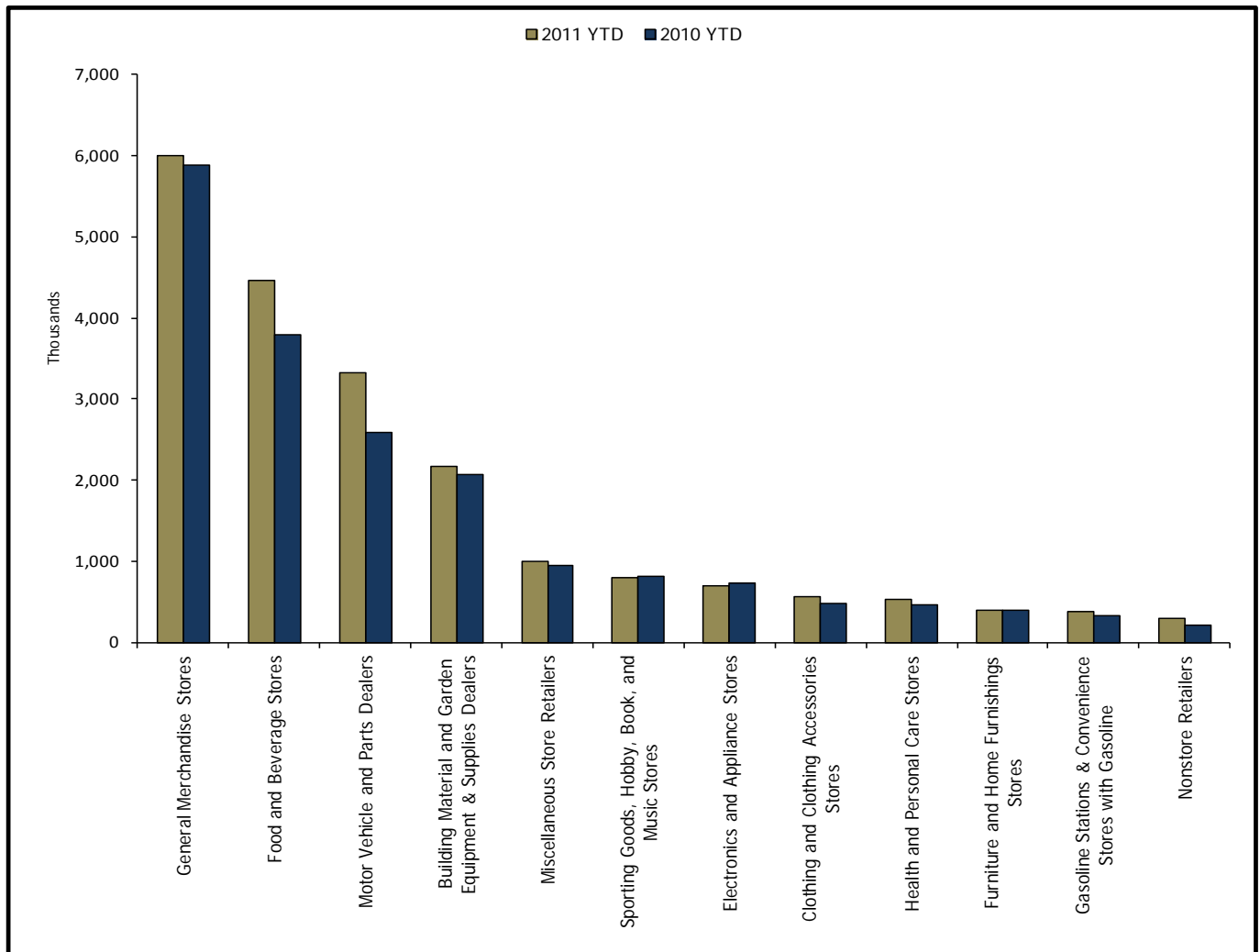


RETAIL SALES TAX COMPARISON BY NAICS CODES

The table and graphs below show a more detailed analysis of the retail sales NAICS code from the previous page:

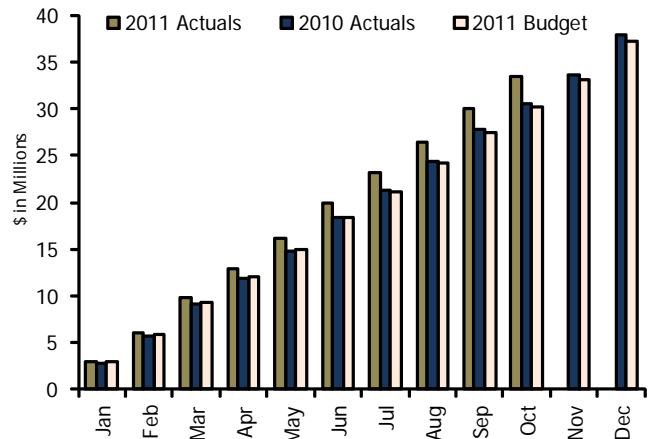
Description	2011	2010	Variance	% Var
General Merchandise Stores	\$ 5,993,598	\$ 5,888,566	\$ 105,033	1.8%
Food and Beverage Stores	4,460,198	3,795,103	665,095	17.5%
Motor Vehicle and Parts Dealers	3,323,489	2,581,415	742,073	28.7%
Building Material and Garden Equipment & Supplies Dealers	2,170,177	2,073,993	96,184	4.6%
Miscellaneous Store Retailers	996,280	948,836	47,443	5.0%
Sporting Goods, Hobby, Book, and Music Stores	798,679	817,408	(18,729)	-2.3%
Electronics and Appliance Stores	694,028	729,012	(34,983)	-4.8%
Clothing and Clothing Accessories Stores	566,499	480,760	85,738	17.8%
Health and Personal Care Stores	525,727	458,350	67,377	14.7%
Furniture and Home Furnishings Stores	392,391	394,540	(2,149)	-0.5%
Gasoline Stations & Convenience Stores with G	376,704	322,898	53,807	16.7%
Nonstore Retailers	293,726	208,781	84,945	40.7%
Grand Total	\$ 20,591,496	\$ 18,699,661	\$ 1,891,836	10.1%

*Retail Sales Tax not collected on gasoline



RETAIL SALES TAX

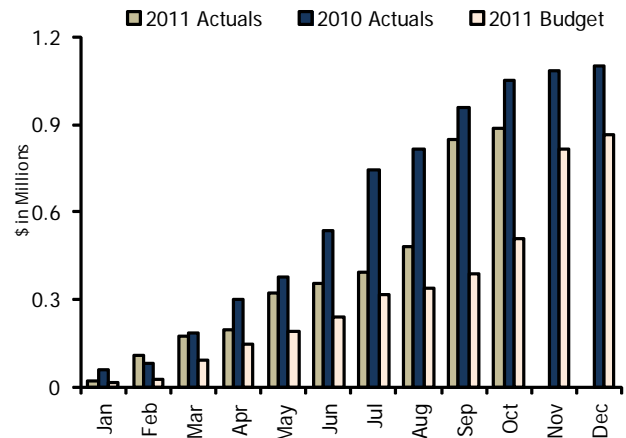
	2011	2010	Variance	% Var
Jan	\$ 3,043,638	\$ 2,789,120	\$ 254,518	9.1%
Feb	3,073,110	2,881,202	191,908	6.7%
Mar	3,692,348	3,417,653	274,695	8.0%
Apr	3,094,618	2,856,448	238,170	8.3%
May	3,246,728	2,941,469	305,259	10.4%
Jun	3,836,874	3,482,311	354,563	10.2%
Jul	3,135,355	2,915,819	219,536	7.5%
Aug	3,406,841	3,126,218	280,623	9.0%
Sep	3,581,648	3,410,776	170,872	5.0%
Oct	3,338,780	2,792,690	546,090	19.6%
Nov				
Dec				
YTD Total	\$33,449,940	\$ 30,613,706	\$ 2,836,234	9.3%



↑ Retail sales tax collections submitted for sales in October of \$3,338,780 were up 19.6% when compared to collections of \$2,792,690 for October 2010 retail sales. Year to date collections are \$3,155,302 more than year to date estimates of \$30,294,638.

SALES TAX ON BUILDING PERMITS

	2011	2010	Variance	% Var
Jan	\$ 20,451	\$ 59,357	\$ (38,906)	-65.5%
Feb	85,970	20,163	65,807	326.4%
Mar	70,810	104,819	(34,009)	-32.4%
Apr	18,066	113,848	(95,782)	-84.1%
May	127,581	79,696	47,885	60.1%
Jun	33,474	156,112	(122,638)	-78.6%
Jul	39,809	208,556	(168,747)	-80.9%
Aug	84,877	75,005	9,872	13.2%
Sep	368,141	142,534	225,607	158.3%
Oct	36,434	88,319	(51,885)	-58.7%
Nov				
Dec				
YTD Total	\$ 885,613	\$ 1,048,409	\$ (162,796)	-15.5%



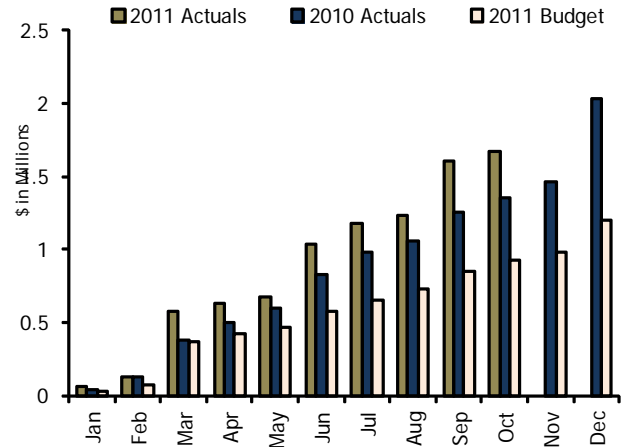
↑ Sales tax collections on building permits recorded in October 2011 of \$36,434 were down 58.7% when compared to \$88,319 collected for the same month in 2010.

In October 2011, three permits for new single family dwelling units were issued; one permit was issued in October 2010. In October 2011, there were 47 permits issued for commercial additions/remodels; the value of these permits decreased from \$4,512,816 in 2010 to \$688,559 in 2011. There were zero new commercial project permits issued in October 2011 compared to one in October 2010. Miscellaneous permits decreased from 149 permits with a valuation of \$914,413 in October 2010 to 110 permits with a valuation of \$524,810 in October 2011.

Year to date through October 2011, a total of 2,148 building permits have been issued with a valuation of \$60,965,333 compared to 3,468 permits with a valuation of \$69,267,018 year to date in 2010. Total permits include not only new construction but also additions and remodels. Year to date collections of sales tax on building permits are \$378,723 more than the 2011 year to date estimate of \$506,890.

USE TAX

	2011	2010	Variance	% Var
Jan	\$ 68,103	\$ 43,388	\$ 24,715	57.0%
Feb	63,719	88,580	(24,861)	-28.1%
Mar	449,848	243,605	206,243	84.7%
Apr	50,367	130,494	(80,127)	-61.4%
May	45,894	91,424	(45,530)	-49.8%
Jun	361,437	233,939	127,498	54.5%
Jul	141,466	152,418	(10,952)	-7.2%
Aug	55,790	78,377	(22,587)	-28.8%
Sep	371,952	197,986	173,966	87.9%
Oct	60,600	98,565	(37,965)	-38.5%
Nov				
Dec				
YTD Total	\$ 1,669,176	\$ 1,358,776	\$ 310,400	22.8%

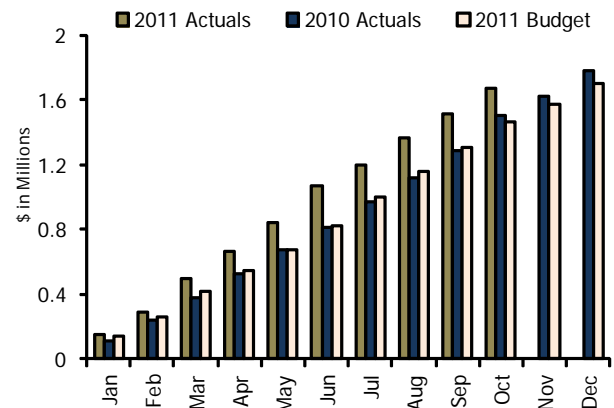


↑ Use tax collections for October 2011 sales totaled \$60,600 which is down 38.5% from collections of \$98,565 for October 2010 sales. Year to date collections are \$746,376 above the original 2011 year to date estimate of \$922,800.

Note: Use tax is typically paid by businesses located in Greeley that are purchasing supplies and equipment for consumption in Greeley from vendors outside Greeley. The use tax is paid in lieu of paying Greeley sales tax at the time of purchase.

AUTO USE TAX

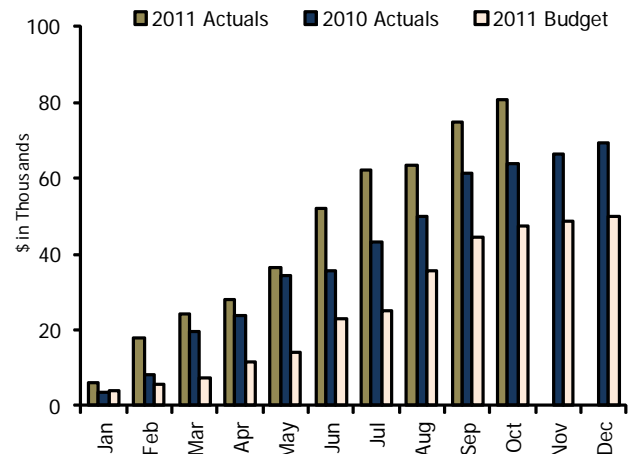
	2011	2010	Variance	% Var
Jan	\$ 150,205	\$ 113,681	\$ 36,524	32.1%
Feb	137,345	127,099	10,246	8.1%
Mar	208,270	133,902	74,368	55.5%
Apr	171,964	154,786	17,178	11.1%
May	171,411	144,917	26,494	18.3%
Jun	230,003	135,863	94,140	69.3%
Jul	133,175	166,595	(33,420)	-20.1%
Aug	169,725	146,720	23,005	15.7%
Sep	145,729	161,171	(15,442)	-9.6%
Oct	159,407	221,854	(62,447)	-28.1%
Nov				
Dec				
YTD Total	\$ 1,677,234	\$ 1,506,588	\$ 170,646	11.3%



↑ Automobile use tax collected in November 2011 from October 2011 sales was \$159,407 which is down 28.1% compared to November 2010 collections for October 2010 sales of \$221,854. Year to date collections are \$215,234 above the original 2011 year to date estimate of \$1,462,000.

PENALTIES & INTEREST

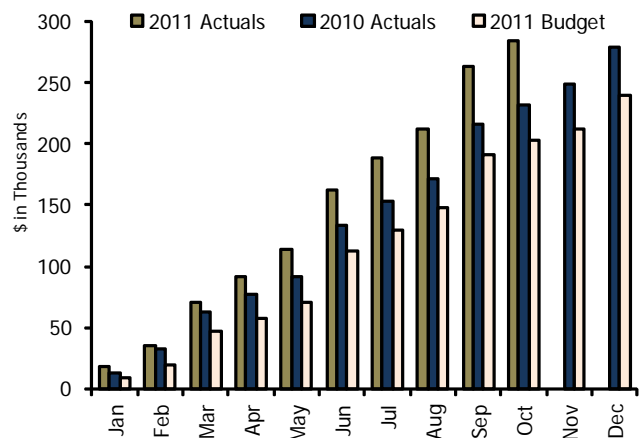
	2011	2010	Variance	% Var
Jan	\$ 5,954	\$ 3,423	\$ 2,531	73.9%
Feb	11,755	4,840	6,915	142.9%
Mar	6,642	11,366	(4,724)	-41.6%
Apr	3,794	3,962	(168)	-4.2%
May	8,401	10,598	(2,197)	-20.7%
Jun	15,593	1,360	14,233	1046.5%
Jul	10,054	7,530	2,524	33.5%
Aug	1,410	6,950	(5,540)	-79.7%
Sep	11,118	11,403	(285)	-2.5%
Oct	6,104	2,575	3,529	137.0%
Nov				
Dec				
YTD Total	\$ 80,825	\$ 64,007	\$ 16,818	26.3%



↑ Penalties and interest on sales and use tax collections year to date total \$80,825. Year to date collections are up 26.3% over 2010 year to date collections of \$64,007 and \$33,225 above 2011 year to date estimates.

LODGING TAX

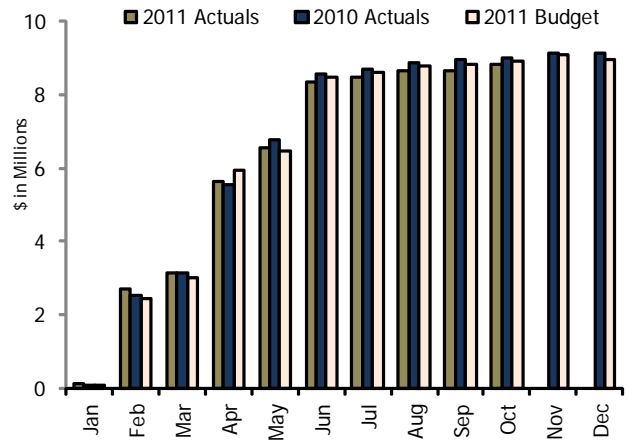
	2011	2010	Variance	% Var
Jan	\$ 17,757	\$ 12,929	\$ 4,828	37.3%
Feb	17,028	19,645	(2,617)	-13.3%
Mar	35,446	29,945	5,501	18.4%
Apr	21,368	14,102	7,266	51.5%
May	22,065	15,054	7,011	46.6%
Jun	49,203	42,363	6,840	16.1%
Jul	26,312	18,637	7,675	41.2%
Aug	23,143	19,604	3,539	18.1%
Sep	51,228	44,274	6,954	15.7%
Oct	20,838	15,636	5,202	33.3%
Nov				
Dec				
YTD Total	\$ 284,388	\$ 232,189	\$ 52,199	22.5%



↑ City of Greeley lodging tax collections for October 2011 sales totaled \$20,838 which is up 33.3% when compared to collections for October 2010 sales of \$15,636. Year to date collections are up 22.5% or \$52,199 when compared to 2010 collections. Collections year to date are \$81,828 above estimate.

PROPERTY TAX

	2011	2010	Variance	% Var
Jan	\$ 129,173	\$ 91,163	\$ 38,010	41.7%
Feb	2,556,727	2,422,005	134,722	5.6%
Mar	436,287	633,347	(197,060)	-31.1%
Apr	2,521,171	2,386,309	134,862	5.7%
May	918,044	1,256,900	(338,856)	-27.0%
Jun	1,766,917	1,776,018	(9,101)	-0.5%
Jul	146,042	133,048	12,994	9.8%
Aug	166,884	181,195	(14,311)	-7.9%
Sep	24,470	64,885	(40,415)	-62.3%
Oct	156,751	45,648	111,103	243.4%
Nov				
Dec				
YTD Total	\$ 8,822,466	\$ 8,990,518	\$ (168,052)	-1.9%

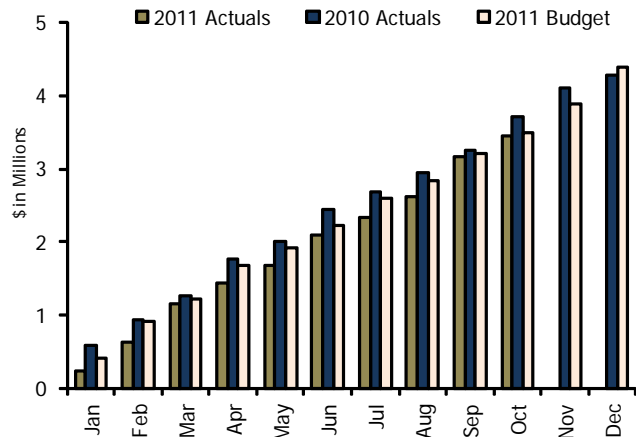


↔ Year to date receipts are \$68,826 below the year to date budget.

Note: Property tax is collected based on the assessed value of all properties in the City and the City's 11.274 mill levy assessed against the property. The City receives its portion of property tax collections through the Weld County Treasurer and is based on actual collections from property owners (property taxes are payable in full in April or in equal installments in February and June). Thus, the timing of collections by the City is based on actual collections by the County.

FRANCHISE FEES

	2011	2010	Variance	% Var
Jan	\$ 231,832	\$ 581,499	\$ (349,667)	-60.1%
Feb	395,136	355,405	39,731	11.2%
Mar	537,507	336,590	200,917	59.7%
Apr	264,954	486,260	(221,306)	-45.5%
May	251,098	246,320	4,778	1.9%
Jun	424,581	438,897	(14,316)	-3.3%
Jul	229,702	231,869	(2,167)	-0.9%
Aug	295,271	266,442	28,829	10.8%
Sep	530,853	303,918	226,935	74.7%
Oct	282,139	455,624	(173,485)	-38.1%
Nov				
Dec				
YTD Total	\$ 3,443,073	\$ 3,702,824	\$ (259,751)	-7.0%



↓ Year to date franchise fee revenue is down 2.2% or \$77,688 from the year to date budget.

Note: The City of Greeley receives franchise fees from electric, natural gas and cable service providers. Electric providers pay 3% of their gross revenue to the City while natural gas and cable pay 5%. This fee reimburses the City for allowing the utilities to place equipment within the rights of way of the City and the costs incurred in repairing the streets for damage caused by street cuts performed by the utilities.

FUND BALANCES

Fund		1/1/2011 Fund Balance	2011 Revenue	2011 Expenditures	Fund Balance As of 11-30-11	Encumbrances
General Funds						
001	General	11,357,246	59,426,597	53,964,832	16,819,011	216,381
Special Revenue Funds						
102	Convention & Visitors	157,796	285,762	165,115	278,444	15,000
103	Community Dev.	770,407	1,126,141	1,154,939	741,609	9,180
104	Streets & Roads	2,850	5,135,849	5,138,699	-	31,239
105	Conservation Trust (Lottery)	2,299	635,549	252	637,596	-
106	Sales & Use Tax	8,241,780	37,883,595	43,570,122	2,555,253	-
107	Improvement Dist. Collections	936,176	121,982	318,302	739,855	-
108	Restricted Fees	581,747	154,367	99,193	636,920	-
109	American Recovery & Reinvestment Act	-	5,184	5,225	(41)	-
Debt Service Funds						
200	General Debt Service	-	6,267,391	6,267,391	-	-
201	Greeley Bldg Auth.	-	223,680	223,680	-	-
Capital Project Funds						
301	Public Imp.	1,292,043	2,333,059	1,956,274	1,668,828	1,757,349
304	Food Tax	445,968	7,137,766	5,887,310	1,696,424	1,862,332
305	Softball Improvement	13,483	2,051	768	14,766	-
306	Fire Equipment/Acquisition Replace	-	833,681	288,874	544,807	65,895
307	Fire Protection Dev.	56,249	320,932	379	376,802	-
308	Police Development	54,514	49,788	46	104,256	-
309	Island Grove Development	(1,146,246)	162,306	208,514	(1,192,454)	-
311	General Improvement Dist.	-	-	-	-	-
312	Road Dev.	1,849,502	1,058,166	186,087	2,721,581	70,611
314	Park Dev.	1,071,054	103,356	822	1,173,587	-
316	Trails Development	318,725	11,111	24,446	305,391	3,664
318	Quality of Life - Sales Tax	1,766,008	1,522,568	477,688	2,810,888	90,827
319	2005 Bond Issue-Police Facility	1,147,122	6,423	148,502	1,005,043	-
Enterprise Funds						
401	Sewer	3,373,544	9,402,287	6,806,183	5,969,648	48,305
402	Sewer Construction	2,727,828	725,249	2,729,116	723,961	675,323
403	Sewer Capital Replacement	2,153,757	2,321,362	2,152,174	2,322,945	1,961,102
404	Water	7,086,996	28,500,584	20,297,848	15,289,731	505,023
405	Water Construction	9,702,175	3,511,112	6,256,555	6,956,732	3,684,459
406	Water Capital Replacement	6,934,355	6,188,124	4,809,423	8,313,056	932,766
407	Water Rights Acquisition	6,034,859	406,436	10,684,972	(4,243,677)	118,692
408	Cemetery	44,510	366,788	366,788	44,510	-
409	Golf	(294,171)	1,714,591	1,868,678	(448,258)	1,238
410	Downtown Parking	1,081,077	304,299	401,210	984,166	40,415
411	Stormwater	3,659,651	2,994,185	2,324,403	4,329,433	3,646
412	Stormwater Construction	424,464	505,413	647,114	282,762	961,741
413	Stormwater Replacement	791,523	755,709	394,944	1,152,288	-
415	Public Safety Combined Service	-	7,051,645	6,661,932	389,713	1,012,050
Internal Service Funds						
502	Equipment Maintenance	(783,249)	3,803,316	3,780,998	(760,931)	147,921
503	Information Technology	341,355	2,096,362	2,198,248	239,469	189,503
504	Health	6,366,506	8,733,334	8,743,891	6,355,948	48,903
505	Workers Compensation	193,532	1,392,007	998,249	587,290	-
506	Communications	318,351	186,976	126,072	379,255	6,131
507	Liability	1,014,097	1,058,095	710,490	1,361,702	-
Trust Funds						
601	Cemetery Endowment	2,060,366	23,506	23,506	2,060,366	-
		82,150,249	206,848,683	203,070,254	85,928,678	14,459,695



Fund Performance Analysis

November, 2011

	2011				2010		
	2011 Total Budget	2011 YTD Actual	2011 YTD Var	% Bud vs Act	2010 YTD Actual	10 vs 11 Variance	% Bud vs Act
General							
Revenue							
City Attorney's Office	15,212	24,086	8,874	158.3%	10,231	13,855	135.4%
City Clerk's Office	34,000	74,577	40,577	219.3%	72,647	1,930	2.7%
City Manager's Office	1,500	164,259	162,759	10950.6%	177,057	(12,798)	-7.2%
Community Development	972,157	1,441,317	469,160	148.3%	1,525,843	(84,526)	-5.5%
Finance	94,012	924,509	830,497	983.4%	898,146	26,364	2.9%
Fire	277,152	129,394	(147,758)	46.7%	-	129,394	100.0%
Human Resources	14,955	74,939	59,984	501.1%	60,897	14,042	23.1%
Leisure Services	5,081,829	4,691,919	(389,910)	92.3%	4,616,633	75,287	1.6%
Municipal Court	2,665,000	2,335,644	(329,356)	87.6%	2,443,317	(107,673)	-4.4%
Police	986,201	948,307	(37,894)	96.2%	4,116,167	(3,167,859)	-77.0%
Public Works	3,600,914	2,360,995	(1,239,919)	65.6%	2,181,743	179,252	8.2%
Non-Departmental	47,187,280	46,256,649	(930,631)	98.0%	44,086,782	2,169,867	4.9%
Revenue Total	60,930,212	59,426,597	(1,503,615)	97.5%	60,189,462	(762,865)	-1.3%
Expenditures							
City Attorney's Office	813,958	743,835	70,123	91.4%	716,349	27,485	3.8%
City Clerk's Office	552,286	506,989	45,297	91.8%	456,931	50,058	11.0%
City Manager's Office	629,045	557,018	72,027	88.5%	507,906	49,112	9.7%
Community Development	2,354,397	1,963,568	390,829	83.4%	1,799,633	163,935	9.1%
Finance	1,950,889	1,641,367	309,522	84.1%	1,529,334	112,033	7.3%
Fire	11,603,550	10,109,108	1,494,442	87.1%	-	10,109,108	100.0%
Human Resources	512,258	458,414	53,844	89.5%	390,008	68,406	17.5%
Leisure Services	9,729,460	8,347,719	1,381,741	85.8%	8,167,900	179,819	2.2%
Municipal Court	675,124	619,021	56,103	91.7%	540,563	78,458	14.5%
Police	19,388,681	17,291,961	2,096,720	89.2%	18,470,814	(1,178,853)	-6.4%
Public Works	7,209,381	6,665,234	544,147	92.5%	6,441,787	223,447	3.5%
Non-Departmental	7,694,688	5,276,980	2,417,708	68.6%	14,472,412	(9,195,433)	-63.5%
Expenditures Total	63,113,717	54,181,213	8,932,504	85.8%	53,493,637	687,576	1.3%
Community Development							
Revenue							
Community Development	4,865,035	1,126,138	(3,738,897)	23.1%	1,237,936	(111,798)	-9.0%
Non-Departmental	-	3	3	100.0%	(0)	3	-3877.8%
Revenue Total	4,865,035	1,126,141	(3,738,894)	23.1%	1,237,936	(111,795)	-9.0%
Expenditures							
Community Development	4,865,035	1,164,103	3,700,932	23.9%	1,436,916	(272,813)	-19.0%
Non-Departmental	-	16	(16)	100.0%	475,363	(475,347)	-100.0%
Expenditures Total	4,865,035	1,164,119	3,700,916	23.9%	1,912,279	(748,160)	-39.1%
Streets & Roads							
Revenue							
Public Works	4,380,730	4,297,314	(83,416)	98.1%	4,087,294	210,020	5.1%
Non-Departmental	2,293,978	838,535	(1,455,443)	36.6%	1,064,321	(225,786)	-21.2%
Revenue Total	6,674,708	5,135,849	(1,538,859)	76.9%	5,151,615	(15,766)	-0.3%
Expenditures							
Public Works	6,677,558	5,167,986	1,509,572	77.4%	5,213,180	(45,194)	-0.9%
Non-Departmental	-	1,952	(1,952)	100.0%	234	1,718	733.5%
Expenditures Total	6,677,558	5,169,938	1,507,620	77.4%	5,213,414	(43,476)	-0.8%

	2011				2010		
	2011 Total Budget	2011 YTD Actual	2011 YTD Var	% Bud vs Act	2010 YTD Actual	10 vs 11 Variance	% Bud vs Act
Restricted Fees							
Revenue							
Municipal Court	30,000	31,488	1,488	105.0%	31,212	276	0.9%
Police	-	27,752	27,752	100.0%	102,307	(74,556)	-72.9%
Public Works	-	27,379	27,379	100.0%	235,516	(208,137)	-88.4%
Non-Departmental	36,208	67,748	31,540	187.1%	70,499	(2,751)	-3.9%
Revenue Total	66,208	154,367	88,159	233.2%	439,534	(285,168)	-64.9%
Expenditures							
Municipal Court	30,000	20,000	10,000	66.7%	22,500	(2,500)	-11.1%
Police	38,401	31,717	6,684	82.6%	59,095	(27,378)	-46.3%
Public Works	113,350	44,749	68,601	39.5%	231,741	(186,993)	-80.7%
Non-Departmental	34,358	2,728	31,630	7.9%	4,238	(1,510)	-35.6%
Expenditures Total	216,109	99,193	116,916	45.9%	317,574	(218,381)	-68.8%
Sewer							
Revenue							
Non-Departmental	1,256,298	1,253,834	(2,464)	99.8%	1,259,121	(5,287)	-0.4%
Water and Sewer	8,643,191	8,148,453	(494,738)	94.3%	7,404,708	743,745	10.0%
Revenue Total	9,899,489	9,402,287	(497,202)	95.0%	8,663,829	738,458	8.5%
Expenditures							
Non-Departmental	5,526,455	5,309,264	217,191	96.1%	6,852,664	(1,543,400)	-22.5%
Water and Sewer	4,568,910	3,731,848	837,062	81.7%	3,726,893	4,955	0.1%
Expenditures Total	10,095,365	9,041,112	1,054,253	89.6%	10,579,556	(1,538,444)	-14.5%
Water							
Revenue							
Non-Departmental	960,664	819,848	(140,816)	85.3%	820,689	(841)	-0.1%
Water and Sewer	28,885,682	27,680,736	(1,204,946)	95.8%	25,553,269	2,127,467	8.3%
Revenue Total	29,846,346	28,500,584	(1,345,762)	95.5%	26,373,958	2,126,626	8.1%
Expenditures							
Non-Departmental	14,515,906	13,602,775	913,131	93.7%	11,044,141	2,558,635	23.2%
Water and Sewer	15,568,278	13,194,238	2,374,040	84.8%	11,759,382	1,434,856	12.2%
Expenditures Total	30,084,184	26,797,014	3,287,170	89.1%	22,803,523	3,993,491	17.5%
Cemetery							
Revenue							
Public Works	252,669	237,121	(15,548)	93.8%	226,837	10,284	4.5%
Non-Departmental	193,405	129,667	(63,738)	67.0%	128,720	947	0.7%
Revenue Total	446,074	366,788	(79,286)	82.2%	355,558	11,231	3.2%
Expenditures							
Public Works	410,899	350,732	60,167	85.4%	339,086	11,646	3.4%
Non-Departmental	60,175	16,056	44,119	26.7%	16,472	(415)	-2.5%
Expenditures Total	471,074	366,788	104,286	77.9%	355,558	11,231	3.2%
Municipal Golf Courses							
Revenue							
Leisure Services	1,548,680	1,461,691	(86,989)	94.4%	1,658,454	(196,763)	-11.9%
Non-Departmental	310,722	252,900	(57,822)	81.4%	359,797	(106,897)	-29.7%
Revenue Total	1,859,402	1,714,591	(144,811)	92.2%	2,018,251	(303,661)	-15.0%
Expenditures							
Leisure Services	1,242,925	1,172,802	70,123	94.4%	1,456,275	(283,473)	-19.5%
Non-Departmental	862,320	697,114	165,206	80.8%	678,315	18,800	2.8%
Expenditures Total	2,105,245	1,869,916	235,329	88.8%	2,134,590	(264,674)	-12.4%

	2011				2010		
	2011 Total Budget	2011 YTD Actual	2011 YTD Var	% Bud vs Act	2010 YTD Actual	10 vs 11 Variance	% Bud vs Act
Downtown Parking							
Revenue							
Police	270,860	297,326	26,466	109.8%	309,429	(12,103)	-3.9%
Non-Departmental	10,000	6,973	(3,027)	69.7%	6,868	105	1.5%
Revenue Total	280,860	304,299	23,439	108.3%	316,297	(11,998)	-3.8%
Expenditures							
Police	191,251	163,069	28,182	85.3%	150,192	12,877	8.6%
Non-Departmental	871,170	278,556	592,614	32.0%	21,774	256,782	1179.3%
Expenditures Total	1,062,421	441,625	620,796	41.6%	171,966	269,659	156.8%
Stormwater							
Revenue							
Public Works	3,444,747	2,971,347	(473,400)	86.3%	2,884,769	86,578	3.0%
Non-Departmental	8,459	22,838	14,379	270.0%	17,878	4,960	27.7%
Revenue Total	3,453,206	2,994,185	(459,021)	86.7%	2,902,646	91,539	3.2%
Expenditures							
Public Works	1,371,280	1,091,107	280,173	79.6%	1,075,315	15,792	1.5%
Non-Departmental	2,840,399	1,236,942	1,603,457	43.5%	1,124,450	112,491	10.0%
Expenditures Total	4,211,679	2,328,049	1,883,630	55.3%	2,199,765	128,284	5.8%
Public Safety Combined Services							
Revenue							
Police	8,469,655	7,051,579	(1,418,076)	83.3%	851,032	6,200,547	728.6%
Non-Departmental	-	67	67	100.0%	-	67	100.0%
Revenue Total	8,469,655	7,051,645	(1,418,010)	83.3%	851,032	6,200,614	728.6%
Expenditures							
Police	8,469,655	7,652,235	817,420	90.3%	3,978,212	3,674,023	92.4%
Non-Departmental	-	21,748	(21,748)	100.0%	-	21,748	100.0%
Expenditures Total	8,469,655	7,673,983	795,672	90.6%	3,978,212	3,695,771	92.9%
Equipment Maintenance							
Revenue							
Public Works	3,924,529	3,233,580	(690,949)	82.4%	3,237,505	(3,925)	-0.1%
Non-Departmental	508,136	569,736	61,600	112.1%	639	569,097	89084.3%
Revenue Total	4,432,665	3,803,316	(629,349)	85.8%	3,238,144	565,172	17.5%
Expenditures							
Public Works	3,515,074	3,323,209	191,866	94.5%	3,638,494	(315,285)	-8.7%
Non-Departmental	904,984	605,711	299,273	66.9%	261,798	343,913	131.4%
Expenditures Total	4,420,058	3,928,920	491,138	88.9%	3,900,292	28,628	0.7%
Information Technology							
Revenue							
Finance	2,492,974	2,095,804	(397,170)	84.1%	1,795,235	300,569	16.7%
Non-Departmental	3,000	558	(2,442)	18.6%	16,707	(16,149)	-96.7%
Revenue Total	2,495,974	2,096,362	(399,612)	84.0%	1,811,942	284,420	15.7%
Expenditures							
Finance	2,494,974	2,285,220	209,754	91.6%	2,171,914	113,305	5.2%
Non-Departmental	141,000	102,531	38,469	72.7%	101,295	1,235	1.2%
Expenditures Total	2,635,974	2,387,751	248,223	90.6%	2,273,210	114,541	5.0%



Department Performance Analysis

November, 2011

Department/Division	2011				2010		
	2011 Total Budget	2011 YTD Actual	2011 YTD Var	% Bud vs Act	2010 YTD Actual	10 vs 11 Variance	% Bud vs Act
Community Development							
Revenue							
Building Inspection							
Charges for Services	1,320	310	(1,010)	23.5%	5,487	(5,177)	-94.4%
Fines & Forfeits	-	100	100	100.0%	125	(25)	-20.0%
Licenses & Permits	432,818	676,365	243,547	156.3%	806,751	(130,386)	-16.2%
Miscellaneous	-	17,615	17,615	100.0%	7	17,608	268011.4%
Cash Over / Short	-	-	(0)	0.0%	-	-	0.0%
Other-Refund Of Expend	-	-	(0)	0.0%	-	-	0.0%
Release Of Lien Fees	72	-	(72)	0.0%	46	(46)	-100.0%
Engineering Development Review							
Charges for Services	-	5	5	100.0%	2	3	110.1%
Transfers	-	158,774	158,774	100.0%	161,661	(2,887)	-1.8%
Natural Resources							
Charges for Services	56,500	91,416	34,916	161.8%	55,000	36,416	66.2%
Fines & Forfeits	378,000	401,983	23,983	106.3%	390,830	11,153	2.9%
Intergovernmental Revenue	47,000	29,000	(18,000)	61.7%	50,000	(21,000)	-42.0%
Miscellaneous	-	0	0	100.0%	-	0	100.0%
Cash Over / Short	-	-	-	-	-	-	-
Other	-	11,142	11,142	100.0%	1,075	10,067	936.5%
Other Private Contrib	-	-	(0)	0.0%	671	(671)	-100.0%
Release Of Lien Fees	1,000	5,435	4,435	543.5%	3,166	2,269	71.7%
Rents From Facilities	13,000	12,501	(499)	96.2%	10,283	2,219	21.6%
Neighborhood Resources							
Charges for Services	-	12	12	100.0%	2,437	(2,425)	-99.5%
Licenses & Permits	800	-	(800)	0.0%	-	-	0.0%
Miscellaneous	-	700	700	100.0%	919	(219)	-23.8%
Rents From Land	-	-	-	-	-	-	-
Non-Departmental							
Miscellaneous	-	3	3	100.0%	4	(1)	-14.1%
Int On Checking	-	-	(0)	0.0%	(4)	4	-100.0%
Net Inc/Dec In Fair Value	-	-	-	-	-	-	-
Planning							
Charges for Services	25,897	25,600	(297)	98.9%	36,784	(11,184)	-30.4%
Intergovernmental Revenue	15,750	10,109	(5,641)	64.2%	600	9,509	1584.8%
Miscellaneous	-	250	250	100.0%	-	250	100.0%
Other Private Contrib	-	-	-	-	-	-	-
Urban Renewal							
Charges for Services	1,083,371	3,121	(1,080,250)	0.3%	90	3,031	3367.6%
Intergovernmental Revenue	3,529,022	1,121,339	(2,407,683)	31.8%	1,234,594	(113,255)	-9.2%
Miscellaneous	-	1,131	1,131	100.0%	1,706	(575)	-33.7%
Cd Program Income	-	546	546	100.0%	-	546	100.0%
Int On Checking	-	-	(0)	0.0%	1,547	(1,547)	-100.0%
Interest On Investments	-	-	-	-	-	-	-
Other	252,642	-	(252,642)	0.0%	-	-	0.0%
Rents From Facilities	-	1	1	100.0%	-	-	100.0%
Revenue Total	5,837,192	2,567,458	(3,269,734)	44.0%	2,763,779	(196,321)	-7.1%
Expenditures							
Building Inspection							
Salaries & Benefits	496,289	445,925	50,364	89.9%	430,104	15,820	3.7%
Supplies & Services	40,413	31,921	8,492	79.0%	33,295	(1,375)	-4.1%
Engineering Development Review							
Salaries & Benefits	226,595	206,388	20,207	91.1%	199,904	6,484	3.2%
Supplies & Services	4,333	3,647	686	84.2%	8,971	(5,324)	-59.3%
Capital	-	-	-	0.0%	-	-	0.0%
Interfund Transfers							
Operating Transfers	-	-	-	0.0%	475,000	(475,000)	-100.0%
Natural Resources							
Salaries & Benefits	456,717	361,086	95,631	79.1%	341,480	19,606	5.7%
Supplies & Services	183,134	94,197	88,937	51.4%	103,851	(9,654)	-9.3%
Miscellaneous Ex Bad Debt Expenses	5,000	(65)	5,065	-1.3%	16,839	(16,904)	-100.4%
Capital	-	-	-	0.0%	8,279	(8,279)	-100.0%
Neighborhood Resources							
Salaries & Benefits	57,304	51,026	6,278	89.0%	113,426	(62,400)	-55.0%
Supplies & Services	10,769	2,696	8,073	25.0%	7,116	(4,420)	-62.1%
Miscellaneous Ex Grants-Outside Pub Agency	-	75	(75)	100.0%	-	75	100.0%
Non-Departmental							
Supplies & Services	138,220	121,038	17,182	87.6%	363	120,675	33252.9%
Planning							
Salaries & Benefits	658,990	587,651	71,339	89.2%	517,049	70,602	13.7%

Department/Division	2011				2010		
	2011 Total Budget	2011 YTD Actual	2011 YTD Var	% Bud vs Act	2010 YTD Actual	10 vs 11 Variance	% Bud vs Act
Supplies & Services	76,633	58,000	18,633	75.7%	18,719	39,281	209.8%
Miscellaneous Ex Grants-Outside Pub Agency	-	-	-	0.0%	600	(600)	-100.0%
Urban Renewal							
Salaries & Benefits	487,579	162,187	325,392	33.3%	169,791	(7,604)	-4.5%
Supplies & Services	3,340,780	330,929	3,009,851	9.9%	939,552	(608,623)	-64.8%
Miscellaneous Ex Grants-Outside Pub Agency	1,036,676	670,986	365,690	64.7%	320,834	350,152	109.1%
Miscellaneous	-	-	-	0.0%	21	(21)	-100.0%
Capital	-	-	-	0.0%	6,717	(6,717)	-100.0%
Expenditures Total	7,219,432	3,127,687	4,091,745	43.3%	3,711,911	(584,225)	-15.7%

Department/Division	2011				2010		
	2011 Total Budget	2011 YTD Actual	2011 YTD Var	% Bud vs Act	2010 YTD Actual	10 vs 11 Variance	% Bud vs Act
Finance							
Revenue							
Financial Services							
Charges for Services	-	37	37	100.0%	227	(190)	-83.8%
Licenses & Permits	-	3,316	3,316	100.0%	22,403	(19,087)	-85.2%
Miscellaneous	-	(97)	(97)	100.0%	46	(143)	-310.9%
Cash Over / Short							
Other	700	3,811	3,111	544.4%	2,544	1,267	49.8%
Transfers	17,066	710,470	693,404	4163.1%	684,618	25,852	3.8%
Fiscal Management							
Transfers	-	73,381	73,381	100.0%	73,315	66	0.1%
Information Technology							
Charges for Services	2,341,923	2,052,474	(289,449)	87.6%	1,706,525	345,949	20.3%
Miscellaneous	5,000	107	(4,893)	2.1%	4,677	(4,569)	-97.7%
Telephone							
Transfers	146,051	43,223	(102,828)	29.6%	84,033	(40,810)	-48.6%
Interfund Transfers							
Transfers	-	-	(0)	0.0%	15,000	(15,000)	-100.0%
Non-Departmental							
Miscellaneous							
Int On Checking	-	333	333	100.0%	13	320	2551.5%
Interest On Investments	3,000	226	(2,774)	7.5%	1,702	(1,476)	-86.7%
Net Inc/Dec In Fair Value	-	(1)	(1)	100.0%	(7)	7	-88.8%
Purchasing							
Charges for Services	45,000	38,360	(6,640)	85.2%	37,864	496	1.3%
Miscellaneous							
Photocopies	-	-	(0)	0.0%	14	(14)	-100.0%
Purchasing Card Rebate	26,500	28,863	2,363	108.9%	20,629	8,234	39.9%
Transfers	4,746	66,369	61,623	1398.4%	56,485	9,884	17.5%
Revenue Total	2,589,986	3,020,871	430,885	116.6%	2,710,088	310,784	11.5%
Expenditures							
Depreciation							
Depreciation	140,000	101,886	38,114	72.8%	100,769	1,117	1.1%
Financial Services							
Salaries & Benefits	1,121,767	906,670	215,097	80.8%	966,230	(59,561)	-6.2%
Supplies & Services	200,624	168,466	32,158	84.0%	155,325	13,141	8.5%
Miscellaneous Ex Bad Debt Expenses	-	58	(58)	100.0%	33	25	76.9%
Fiscal Management							
Salaries & Benefits	202,335	180,506	21,829	89.2%	180,800	(294)	-0.2%
Supplies & Services	2,416	1,891	525	78.3%	2,011	(120)	-6.0%
Information Technology							
Salaries & Benefits	1,405,280	1,220,967	184,313	86.9%	1,152,164	68,803	6.0%
Supplies & Services	932,643	992,174	(59,531)	106.4%	630,024	362,150	57.5%
Miscellaneous Ex Bad Debt Expenses	-	16	(16)	100.0%	-	16	100.0%
Capital	157,051	72,062	84,989	45.9%	389,726	(317,664)	-81.5%
Non-Departmental							
Supplies & Services	169,352	148,046	21,306	87.4%	497	147,549	29679.0%
Miscellaneous Ex Miscellaneous	-	3	(3)	100.0%	29	(26)	-90.1%
Purchasing							
Salaries & Benefits	249,550	231,109	18,441	92.6%	220,215	10,894	4.9%
Supplies & Services	5,845	5,263	582	90.0%	4,720	543	11.5%
Expenditures Total	4,586,863	4,029,117	557,746	87.8%	3,802,543	226,574	6.0%

Department/Division	2011				2010		
	2011 Total Budget	2011 YTD Actual	2011 YTD Var	% Bud vs Act	2010 YTD Actual	10 vs 11 Variance	% Bud vs Act
Fire							
Revenue							
Administration							
Intergovernmental Revenue	160,000	4,000	(156,000)	2.5%	-	4,000	100.0%
Miscellaneous Restitution District Ct	-	2,648	2,648	100.0%	-	2,648	100.0%
Community Safety							
Charges for Services	15,000	30,985	15,985	206.6%	-	30,985	100.0%
Intergovernmental Revenue	47,900	35,925	(11,975)	75.0%	-	35,925	100.0%
Operations							
Charges for Services	3,500	4,804	1,304	137.3%	-	4,804	100.0%
Intergovernmental Revenue	46,500	46,080	(420)	99.1%	-	46,080	100.0%
Miscellaneous Damages Recovered	3,252	3,252	0	100.0%	-	3,252	100.0%
Other Private Contrib	1,000	1,700	700	170.0%	-	1,700	100.0%
Revenue Total	277,152	129,394	(147,758)	46.7%	-	129,394	100.0%
Expenditures							
Administration							
Salaries & Benefits	192,916	169,232	23,684	87.7%	-	169,232	100.0%
Supplies & Services	68,043	53,097	14,946	78.0%	-	53,097	100.0%
Community Safety							
Salaries & Benefits	278,521	245,189	33,332	88.0%	-	245,189	100.0%
Supplies & Services	420,470	368,876	51,594	87.7%	-	368,876	100.0%
Debt Service							
Debt Service	42,500	42,501	(1)	100.0%	-	42,501	100.0%
Non-Departmental							
Salaries & Benefits	27,800	34,102	(6,302)	122.7%	-	34,102	100.0%
Operations							
Salaries & Benefits	9,701,641	8,460,045	1,241,596	87.2%	-	8,460,045	100.0%
Supplies & Services	871,659	736,175	135,484	84.5%	-	736,175	100.0%
Miscellaneous Ex Bad Debt Expenses	-	(108)	108	100.0%	-	(108)	100.0%
Expenditures Total	11,603,550	10,109,108	1,494,442	87.1%	-	10,109,108	100.0%

Department/Division	2011				2010		
	2011 Total Budget	2011 YTD Actual	2011 YTD Var	% Bud vs Act	2010 YTD Actual	10 vs 11 Variance	% Bud vs Act
Police							
Revenue							
Information Management							
Charges for Services	8,445,330	7,040,313	(1,405,017)	83.4%	48,354	6,991,959	14460.0%
Intergovernmental Revenue	24,325	11,494	(12,831)	47.3%	3,798,955	(3,787,461)	-99.7%
Miscellaneous	-	0	0	100.0%	-	0	100.0%
Cash Over / Short	-	0	0	100.0%	-	0	100.0%
Sales Of Other City Asset	-	200	200	100.0%	-	200	100.0%
Non-Departmental							
Miscellaneous	-	277	277	100.0%	3	275	10441.4%
Int On Checking	-	277	277	100.0%	3	275	10441.4%
Interest On Investments	10,000	6,777	(3,223)	67.8%	6,882	(105)	-1.5%
Net Inc/Dec In Fair Value	-	(15)	(15)	100.0%	(17)	2	-9.0%
Parking							
Fines & Forfeits	191,000	173,575	(17,425)	90.9%	173,776	(201)	-0.1%
Miscellaneous	-	(105)	(105)	100.0%	23	(128)	-555.4%
Cash Over / Short	-	(105)	(105)	100.0%	23	(128)	-555.4%
Rents From Equipment	-	-	(0)	0.0%	8	(8)	-100.0%
Rents From Land	79,860	123,443	43,583	154.6%	135,622	(12,179)	-9.0%
Sales Of Fixed Assets	-	412	412	100.0%	-	412	100.0%
Patrol							
Charges for Services	2,815	13,304	10,489	472.6%	12,263	1,041	8.5%
Fines & Forfeits	160,000	126,942	(33,058)	79.3%	143,416	(16,474)	-11.5%
Intergovernmental Revenue	48,798	37,409	(11,389)	76.7%	65,172	(27,763)	-42.6%
Licenses & Permits	15,000	12,593	(2,407)	84.0%	14,637	(2,044)	-14.0%
Miscellaneous	-	500	500	100.0%	2,200	(1,700)	-77.3%
Other Private Contrib	-	500	500	100.0%	2,200	(1,700)	-77.3%
Other-Refund Of Expend	-	463	463	100.0%	431	32	7.3%
Taxes	138,900	156,857	17,957	112.9%	141,140	15,717	11.1%
Services							
Charges for Services	79,713	57,367	(22,346)	72.0%	71,721	(14,354)	-20.0%
Fines & Forfeits	-	27,157	27,157	100.0%	102,307	(75,151)	-73.5%
Intergovernmental Revenue	487,165	447,169	(39,996)	91.8%	626,442	(179,273)	-28.6%
Miscellaneous	6,887	10,633	3,746	154.4%	7,835	2,798	35.7%
Insurance Recoveries	-	(386)	(386)	100.0%	-	(386)	100.0%
Interest	-	(386)	(386)	100.0%	-	(386)	100.0%
Other	600	37,991	37,391	6331.9%	3,138	34,853	1110.8%
Other Interest	-	(186)	(186)	100.0%	186	-	0.0%
Other Private Contrib	500	500	(0)	100.0%	-	500	100.0%
Other-Refund Of Expend	-	6	6	100.0%	-	6	100.0%
Rents From Facilities	7,320	7,320	(0)	100.0%	24,350	(17,030)	-69.9%
Sales Of Fixed Assets	-	8,567	8,567	100.0%	6,957	1,609	23.1%
Sales Of Other City Asset	4,500	4,106	(394)	91.2%	-	4,106	100.0%
Transfers	34,003	27,319	(6,684)	80.3%	-	27,319	100.0%
Revenue Total	9,736,716	8,332,003	(1,404,713)	85.6%	5,385,803	2,946,200	54.7%
Expenditures							
Capital Improvements							
Salaries & Benefits	-	15,951	(15,951)	100.0%	-	15,951	100.0%
Capital	722,000	142,663	579,337	19.8%	-	142,663	100.0%
Depreciation							
Depreciation	31,000	22,431	8,569	72.4%	21,165	1,265	6.0%
Information Management							
Salaries & Benefits	4,528,229	4,051,014	477,215	89.5%	6,329,357	(2,278,343)	-36.0%
Supplies & Services	1,505,013	1,307,570	197,443	86.9%	1,426,674	(119,104)	-8.3%
Miscellaneous	-	-	-	0.0%	(4,627)	4,627	-100.0%
Ex Bad Debt Expenses	-	-	-	0.0%	(4,627)	4,627	-100.0%
Intergov Agreemnt-County	111,737	111,737	-	100.0%	-	111,737	100.0%
Operating Transfers	47,475	43,519	3,956	91.7%	-	43,519	100.0%
Capital	2,277,201	2,138,395	138,806	93.9%	210,500	1,927,895	915.9%
Interfund Transfers							
Operating Transfers	117,795	117,795	-	100.0%	-	117,795	100.0%
Non-Departmental							
Supplies & Services	308,721	271,309	37,412	87.9%	513	270,797	52796.1%
Miscellaneous	-	135	(135)	100.0%	96	39	40.3%
Parking							
Salaries & Benefits	119,405	115,327	4,078	96.6%	113,198	2,129	1.9%
Supplies & Services	46,846	27,801	19,045	59.3%	36,994	(9,193)	-24.8%
Capital	25,000	19,941	5,059	79.8%	-	19,941	100.0%
Patrol							
Salaries & Benefits	10,417,771	9,238,265	1,179,506	88.7%	8,655,431	582,834	6.7%
Supplies & Services	505,563	468,610	36,953	92.7%	229,468	239,142	104.2%
Miscellaneous	-	7,334	(7,334)	100.0%	778	6,556	843.2%
Ex Bad Debt Expenses	-	7,334	(7,334)	100.0%	778	6,556	843.2%
Services							
Salaries & Benefits	4,484,965	3,986,625	498,340	88.9%	4,151,954	(165,328)	-4.0%
Supplies & Services	3,521,371	3,287,028	234,343	93.3%	1,349,873	1,937,155	143.5%
Miscellaneous	-	(3,737)	3,737	100.0%	-	(3,737)	100.0%
Ex Bad Debt Expenses	-	(3,737)	3,737	100.0%	-	(3,737)	100.0%
Grants-Outside Pub Agency	9,000	6,750	2,250	75.0%	6,750	-	0.0%
Intergovernmental Agreemnt	131,765	21,207	110,558	16.1%	26,815	(5,609)	-20.9%
Miscellaneous	4,398	4,398	(0)	100.0%	6,295	(1,897)	-30.1%
Operating Transfers	34,003	27,319	6,684	80.3%	-	27,319	100.0%
Capital	9,900	9,900	-	100.0%	118,853	(108,953)	-91.7%

Department/Division	2011				2010		
	2011 Total Budget	2011 YTD Actual	2011 YTD Var	% Bud vs Act	2010 YTD Actual	10 vs 11 Variance	% Bud vs Act
Expenditures Total	28,959,158	25,439,285	3,519,873	87.8%	22,680,086	2,759,199	12.2%
Public Works							
Revenue							
Parks							
Charges for Services	306,754	279,606	(27,148)	91.2%	295,109	(15,502)	-5.3%
Intergovernmental Revenue	-	-	(0)	0.0%	87	(87)	-100.0%
Licenses & Permits	275	-	(275)	0.0%	50	(50)	-100.0%
Miscellaneous							
Damages Recovered	-	294	294	100.0%	-	294	100.0%
Insurance Recoveries	-	380	380	100.0%	821	(441)	-53.7%
Other	8,000	10,245	2,245	128.1%	11,813	(1,569)	-13.3%
Other Private Contrib	-	1,150	1,150	100.0%	-	1,150	100.0%
Other-Refund Of Expend	-	-	(0)	0.0%	3,192	(3,192)	-100.0%
Release Of Lien Fees	120	220	100	183.3%	307	(87)	-28.3%
Rents From Facilities	38,170	57,338	19,168	150.2%	27,718	29,620	106.9%
Restitution District Ct	-	-	(0)	0.0%	57	(57)	-100.0%
Royalties	20,000	29,379	9,379	146.9%	26,449	2,931	11.1%
Sales Of Fixed Assets	-	708	708	100.0%	465	243	52.3%
Transfers	1,084,084	214,577	(869,507)	19.8%	214,827	(250)	-0.1%
Administration							
Intergovernmental Revenue	134,688	123,976	(10,712)	92.0%	123,284	692	0.6%
Taxes	85,848	64,279	(21,569)	74.9%	59,127	5,151	8.7%
Transfers	-	-	(0)	0.0%	-	-	0.0%
Debt Service							
Charges for Services	507,986	566,877	58,891	111.6%	-	566,877	100.0%
Engineering							
Charges for Services	504,100	513,437	9,337	101.9%	592,751	(79,314)	-13.4%
Intergovernmental Revenue	348,500	328,960	(19,540)	94.4%	323,197	5,764	1.8%
Licenses & Permits	45,500	99,062	53,562	217.7%	54,926	44,136	80.4%
Miscellaneous							
Cash Over / Short	-	(0)	(0)	100.0%	0	(1)	-164.5%
Sales Of Fixed Assets	-	3,684	3,684	100.0%	-	3,684	100.0%
Equipment Maintenance							
Bond Proceeds	822,109	239,873	(582,236)	29.2%	401,212	(161,339)	-40.2%
Charges for Services	3,082,420	2,888,828	(193,592)	93.7%	2,758,219	130,609	4.7%
Miscellaneous							
Damages Recovered	20,000	-	(20,000)	0.0%	1,014	(1,014)	-100.0%
Equipment Maint Rebate	-	84,244	84,244	100.0%	-	84,244	100.0%
Sales Of Fixed Assets	-	18,485	18,485	100.0%	77,060	(58,575)	-76.0%
Sales Of Other City Asset	-	2,151	2,151	100.0%	-	2,151	100.0%
Facilities Management							
Charges for Services	20,000	30,173	10,173	150.9%	26,012	4,161	16.0%
Miscellaneous							
Rents From Facilities	1,500	56,428	54,928	3761.9%	1,385	55,043	3974.2%
Sales Of Fixed Assets	-	-	(0)	0.0%	154	(154)	-100.0%
Sales Of Other City Asset	-	99	99	100.0%	-	99	100.0%
Transfers	294,197	301,922	7,725	102.6%	42,438	259,484	611.4%
Interfund Transfers							
Transfers	2,487,383	967,139	(1,520,244)	38.9%	1,192,994	(225,855)	-18.9%
Non-Departmental							
Miscellaneous							
Int On Checking	150	2,286	2,136	1524.2%	486	1,800	370.5%
Interest On Investments	8,459	24,527	16,068	289.9%	18,118	6,408	35.4%
Net Inc/Dec In Fair Value	-	(53)	(53)	100.0%	(41)	(13)	31.6%
Stormwater							
Charges for Services	3,444,447	2,970,686	(473,761)	86.2%	2,882,883	87,803	3.0%
Fines & Forfeits	-	-	(0)	0.0%	50	(50)	-100.0%
Intergovernmental Revenue	300	300	(0)	100.0%	300	-	0.0%
Licenses & Permits	-	361	361	100.0%	380	(19)	-5.1%
Miscellaneous							
Damages Recovered	-	-	(0)	0.0%	1,155	(1,155)	-100.0%
Street Maintenance							
Charges for Services	42,113	161,327	119,214	383.1%	48,563	112,765	232.2%
Intergovernmental Revenue	1,832,600	1,861,051	28,451	101.6%	1,728,758	132,294	7.7%
Miscellaneous							
Insurance Recoveries	-	-	(0)	0.0%	907	(907)	-100.0%
Sales Of Fixed Assets	-	1,417	1,417	100.0%	1,929	(512)	-26.5%
Sales Of Other City Asset	-	3,362	3,362	100.0%	-	3,362	100.0%
Transit Services							
Charges for Services	844,365	719,903	(124,462)	85.3%	566,844	153,059	27.0%
Intergovernmental Revenue	1,236,118	860,011	(376,107)	69.6%	1,181,343	(321,332)	-27.2%
Miscellaneous							
Cash Over / Short	-	80	80	100.0%	(66)	146	-220.6%
Insurance Recoveries	-	103	103	100.0%	954	(852)	-89.3%
Sales Of Fixed Assets	-	27,932	27,932	100.0%	-	27,932	100.0%
Transportation Services							
Charges for Services	224,280	187,200	(37,080)	83.5%	232,458	(45,258)	-19.5%
Fines & Forfeits	-	27,379	27,379	100.0%	235,516	(208,137)	-88.4%
Intergovernmental Revenue	523,049	470,819	(52,230)	90.0%	473,432	(2,613)	-0.6%
Licenses & Permits	8,000	395	(7,605)	4.9%	9,275	(8,880)	-95.7%
Miscellaneous							
Damages Recovered	2,000	2,972	972	148.6%	2,349	623	26.5%
Insurance Recoveries	-	-	(0)	0.0%	136	(136)	-100.0%
Other	500	3,223	2,723	644.6%	783	2,440	311.5%

Department/Division	2011				2010		
	2011 Total Budget	2011 YTD Actual	2011 YTD Var	% Bud vs Act	2010 YTD Actual	10 vs 11 Variance	% Bud vs Act
Sales Of Fixed Assets	-	-	(0)	0.0%	1,818	(1,818)	-100.0%
Sales Of Other City Asset	-	773	773	100.0%	-	773	100.0%
Taxes	629,552	471,377	(158,175)	74.9%	433,601	37,776	8.7%
Facilities Services	-	7,568	7,568	100.0%	8,621	(1,053)	-12.2%
Transfers	-	7,568	7,568	100.0%	8,621	(1,053)	-12.2%
Revenue Total	18,607,567	14,688,513	(3,919,054)	78.9%	14,065,222	623,290	4.4%
Expenditures							
Parks							
Salaries & Benefits	2,327,818	2,097,875	229,943	90.1%	2,088,678	9,198	0.4%
Supplies & Services	941,012	882,290	58,722	93.8%	837,705	44,585	5.3%
Miscellaneous Ex Bad Debt Expenses	-	(38)	38	100.0%	(1,153)	1,115	-96.7%
Administration							
Salaries & Benefits	324,382	234,946	89,436	72.4%	210,641	24,305	11.5%
Supplies & Services	4,335	3,541	794	81.7%	2,673	868	32.5%
Debt Service							
Debt Service	539,309	382,060	157,249	70.8%	133,734	248,326	185.7%
Depreciation							
Depreciation	501,000	295,556	205,444	59.0%	201,354	94,202	46.8%
Engineering							
Salaries & Benefits	1,286,728	1,082,025	204,703	84.1%	1,078,080	3,945	0.4%
Supplies & Services	103,351	82,985	20,366	80.3%	62,845	20,140	32.0%
Equipment Maintenance							
Salaries & Benefits	769,603	697,796	71,807	90.7%	674,852	22,945	3.4%
Supplies & Services	1,989,864	1,964,247	25,617	98.7%	1,782,488	181,759	10.2%
Capital	755,607	661,165	94,442	87.5%	1,181,154	(519,989)	-44.0%
Facilities Management							
Salaries & Benefits	650,579	544,198	106,381	83.6%	556,787	(12,589)	-2.3%
Supplies & Services	765,747	642,330	123,417	83.9%	571,131	71,200	12.5%
Interfund Transfers							
Operating Transfers	2,764,399	1,176,744	1,587,655	42.6%	1,065,581	111,164	10.4%
Non-Departmental							
Supplies & Services	331,383	295,199	36,184	89.1%	2,037	293,162	14391.2%
Miscellaneous Ex Miscellaneous	-	508	(508)	100.0%	248	260	104.7%
Stormwater							
Salaries & Benefits	1,050,101	773,281	276,820	73.6%	789,299	(16,018)	-2.0%
Supplies & Services	321,179	317,826	3,353	99.0%	285,470	32,355	11.3%
Miscellaneous Ex Grants-Outside Pub Agency	-	-	-	0.0%	545	(545)	-100.0%
Street Maintenance							
Salaries & Benefits	1,130,445	999,842	130,603	88.4%	1,074,671	(74,830)	-7.0%
Supplies & Services	829,565	761,648	67,917	91.8%	809,806	(48,158)	-5.9%
Miscellaneous Ex Bad Debt Expenses	-	1,654	(1,654)	100.0%	-	1,654	100.0%
Capital	10,000	10,000	-	100.0%	-	10,000	100.0%
Transit Services							
Salaries & Benefits	1,549,269	1,519,758	29,511	98.1%	1,568,262	(48,504)	-3.1%
Supplies & Services	924,070	915,107	8,963	99.0%	923,742	(8,634)	-0.9%
Transportation Services							
Salaries & Benefits	984,303	842,322	141,981	85.6%	877,509	(35,187)	-4.0%
Supplies & Services	1,963,244	1,050,609	912,635	53.5%	1,328,696	(278,087)	-20.9%
Capital	22,820	27,821	(5,001)	121.9%	-	27,821	100.0%
Facilities Services							
Salaries & Benefits	236,033	209,607	26,426	88.8%	207,163	2,444	1.2%
Supplies & Services	26,954	30,776	(3,822)	114.2%	28,559	2,216	7.8%
Expenditures Total	23,103,100	18,503,677	4,599,423	80.1%	18,342,557	161,120	0.9%

Department/Division	2011				2010		
	2011 Total Budget	2011 YTD Actual	2011 YTD Var	% Bud vs Act	2010 YTD Actual	10 vs 11 Variance	% Bud vs Act
Leisure Services							
Revenue							
Admin Leisure Services							
Miscellaneous							
Other Private Contrib	18,000	20,000	2,000	111.1%	20,000	-	0.0%
Special Events Donations	-	-	(0)	0.0%	(359)	359	-100.0%
Culture & Public Art							
Charges for Services	843,000	1,086,181	243,181	128.8%	880,602	205,579	23.3%
Intergovernmental Revenue	-	-	(0)	0.0%	19,900	(19,900)	-100.0%
Miscellaneous							
Cash Over / Short	-	(1,294)	(1,294)	100.0%	60	(1,354)	-2259.8%
Insurance Recoveries	-	-	(0)	0.0%	142	(142)	-100.0%
Other Private Contrib	30,000	5,931	(24,069)	19.8%	15,904	(9,973)	-62.7%
Rents From Facilities	95,000	74,782	(20,219)	78.7%	95,368	(20,587)	-21.6%
Golf							
Charges for Services	1,527,680	1,451,864	(75,816)	95.0%	1,458,360	(6,496)	-0.4%
Miscellaneous							
Cash Over / Short	-	(76)	(76)	100.0%	(110)	35	-31.3%
Damages Recovered	-	6,025	6,025	100.0%	-	6,025	100.0%
Insurance Recoveries	-	-	(0)	0.0%	191,883	(191,883)	-100.0%
Other	-	631	631	100.0%	361	270	74.7%
Other Private Contrib	-	100	100	100.0%	200	(100)	-50.0%
Rents From Equipment	-	100	100	100.0%	100	-	0.0%
Rents From Land	21,000	-	(21,000)	0.0%	-	-	0.0%
Restitution District Ct	-	-	(0)	0.0%	7,488	(7,488)	-100.0%
Sales Of Fixed Assets	-	2,631	2,631	100.0%	173	2,459	1423.6%
Rebates	-	416	416	100.0%	-	416	100.0%
Interfund Transfers							
Transfers	310,722	249,950	(60,772)	80.4%	357,903	(107,953)	-30.2%
Island Grove							
Charges for Services	74,500	67,978	(6,522)	91.2%	16,166	51,812	320.5%
Miscellaneous							
Cash Over / Short	-	-	(0)	0.0%	-	-	0.0%
County Buildings	441,682	384,321	(57,361)	87.0%	373,736	10,585	2.8%
Insurance Recoveries	-	1,261	1,261	100.0%	-	1,261	100.0%
Other-Refund Of Expend	-	-	(0)	0.0%	-	-	0.0%
Rents From Equipment	-	600	600	100.0%	-	600	100.0%
Rents From Facilities	329,500	269,633	(59,867)	81.8%	361,695	(92,062)	-25.5%
Sales Of Other City Asset	-	1,851	1,851	100.0%	-	1,851	100.0%
Transfers	40,000	-	(40,000)	0.0%	40,000	(40,000)	-100.0%
Marketing							
Charges for Services	31,413	28,187	(3,226)	89.7%	32,258	(4,071)	-12.6%
Miscellaneous							
Other Private Contrib	59,500	18,003	(41,497)	30.3%	19,300	(1,297)	-6.7%
Rents From Facilities	17,000	18,190	1,190	107.0%	18,418	(228)	-1.2%
Museum							
Charges for Services	103,508	86,851	(16,657)	83.9%	96,973	(10,122)	-10.4%
Miscellaneous							
Cash Over / Short	-	78	78	100.0%	(78)	156	-199.3%
Other Private Contrib	2,500	12,006	9,506	480.3%	9,965	2,041	20.5%
Photocopies	1,000	526	(474)	52.6%	481	46	9.5%
Rents From Facilities	10,700	7,583	(3,117)	70.9%	11,092	(3,509)	-31.6%
Transfers	109,727	100,583	(9,144)	91.7%	100,700	(117)	-0.1%
Non-Departmental							
Miscellaneous							
Int On Checking	-	569	569	100.0%	6	563	9443.1%
Interest On Investments	-	2,387	2,387	100.0%	1,893	494	26.1%
Net Inc/Dec In Fair Value	-	(5)	(5)	100.0%	(4)	(1)	20.9%
Recreation							
Charges for Services	2,466,246	2,175,521	(290,725)	88.2%	2,177,450	(1,929)	-0.1%
Miscellaneous							
Cash Over / Short	-	1,232	1,232	100.0%	593	639	107.8%
Other	5,707	5,228	(479)	91.6%	4,513	715	15.8%
Other Private Contrib	10,300	9,005	(1,295)	87.4%	14,347	(5,342)	-37.2%
Other-Refund Of Expend	11,000	-	(11,000)	0.0%	10,834	(10,834)	-100.0%
Rents From Equipment	25,500	22,521	(2,979)	88.3%	21,197	1,324	6.2%
Rents From Facilities	263,530	196,225	(67,305)	74.5%	209,383	(13,158)	-6.3%
Telephone	1,450	469	(981)	32.4%	774	(304)	-39.3%
Youth Enrichment							
Charges for Services	17,940	24,790	6,850	138.2%	12,092	12,698	105.0%
Intergovernmental Revenue	65,126	64,104	(1,022)	98.4%	44,280	19,824	44.8%
Miscellaneous							
Cash Over / Short	-	(2)	(2)	100.0%	(42)	40	-95.0%
Insurance Recoveries	-	473	473	100.0%	-	473	100.0%
Other Private Contrib	1,000	2,145	1,145	214.5%	1,051	1,094	104.1%
Rents From Facilities	7,000	5,328	(1,672)	76.1%	7,838	(2,510)	-32.0%
Sales Of Fixed Assets	-	1,628	1,628	100.0%	-	1,628	100.0%
Revenue Total	6,941,231	6,406,510	(534,721)	92.3%	6,634,884	(228,374)	-3.4%
Expenditures							
Admin Leisure Services							
Salaries & Benefits	245,661	227,399	18,262	92.6%	221,999	5,400	2.4%
Supplies & Services	197,655	177,424	20,231	89.8%	18,580	158,844	854.9%
Miscellaneous Ex Grants-Outside Pub Agency	-	2,000	(2,000)	100.0%	-	2,000	100.0%
Culture & Public Art							

Department/Division	2011				2010		
	2011 Total Budget	2011 YTD Actual	2011 YTD Var	% Bud vs Act	2010 YTD Actual	10 vs 11 Variance	% Bud vs Act
Salaries & Benefits	603,242	500,671	102,571	83.0%	524,964	(24,292)	-4.6%
Supplies & Services	986,582	890,642	95,940	90.3%	913,229	(22,588)	-2.5%
Miscellaneous Ex Bad Debt Expenses	-	-	-	0.0%	158	(158)	-100.0%
Capital	5,900	5,864	36	99.4%	-	5,864	100.0%
Debt Service							
Debt Service	676,320	541,749	134,571	80.1%	535,070	6,678	1.2%
Depreciation							
Depreciation	186,000	154,087	31,913	82.8%	142,580	11,508	8.1%
Facility Services							
Salaries & Benefits	459,126	395,507	63,619	86.1%	419,114	(23,607)	-5.6%
Supplies & Services	155,666	125,686	29,980	80.7%	154,195	(28,508)	-18.5%
Golf							
Salaries & Benefits	700,690	616,473	84,217	88.0%	625,798	(9,325)	-1.5%
Supplies & Services	541,385	537,221	4,164	99.2%	523,116	14,105	2.7%
Miscellaneous Ex Bad Debt Expenses	-	107	(107)	100.0%	-	107	100.0%
Compensation For Damages	850	-	850	0.0%	-	-	0.0%
Capital	-	19,000	(19,000)	100.0%	307,361	(288,361)	-93.8%
Island Grove							
Salaries & Benefits	854,218	750,463	103,755	87.9%	756,365	(5,903)	-0.8%
Supplies & Services	580,391	503,412	76,979	86.7%	509,337	(5,925)	-1.2%
Miscellaneous Ex Bad Debt Expenses	-	-	-	0.0%	4,085	(4,085)	-100.0%
Capital	-	-	-	0.0%	14,595	(14,595)	-100.0%
Marketing							
Salaries & Benefits	370,904	243,609	127,295	65.7%	318,063	(74,454)	-23.4%
Supplies & Services	118,023	116,367	1,656	98.6%	124,561	(8,194)	-6.6%
Miscellaneous Ex Bad Debt Expenses	-	-	-	0.0%	542	(542)	-100.0%
Museum							
Salaries & Benefits	579,863	504,346	75,517	87.0%	512,321	(7,975)	-1.6%
Supplies & Services	245,084	190,972	54,112	77.9%	207,602	(16,629)	-8.0%
Miscellaneous Ex Grants-Outside Pub Agency	10,000	9,245	755	92.5%	-	9,245	100.0%
Operating Transfers	-	5,278	(5,278)	100.0%	-	5,278	100.0%
Capital	7,200	-	7,200	0.0%	-	-	0.0%
Non-Departmental							
Supplies & Services	285,415	251,125	34,290	88.0%	639	250,486	39226.7%
Miscellaneous Ex Miscellaneous	-	55	(55)	100.0%	26	29	109.5%
Recreation							
Salaries & Benefits	2,038,988	1,711,667	327,321	83.9%	1,746,399	(34,732)	-2.0%
Supplies & Services	1,392,517	1,229,490	163,027	88.3%	1,196,083	33,406	2.8%
Miscellaneous Ex Bad Debt Expenses	-	(1,521)	1,521	100.0%	(666)	(854)	128.2%
Grants-Outside Pub Agency	-	1,500	(1,500)	100.0%	-	1,500	100.0%
Capital	-	6,420	(6,420)	100.0%	-	6,420	100.0%
Youth Enrichment							
Salaries & Benefits	441,181	363,349	77,832	82.4%	380,918	(17,569)	-4.6%
Supplies & Services	135,923	120,453	15,470	88.6%	121,912	(1,460)	-1.2%
Miscellaneous Ex Grants-Outside Pub Agency	15,921	17,574	(1,653)	110.4%	23,543	(5,969)	-25.4%
Capital	-	-	-	0.0%	-	-	0.0%
Expenditures Total	11,834,705	10,217,635	1,617,070	86.3%	10,302,489	(84,854)	-0.8%

Department/Division	2011				2010		
	2011 Total Budget	2011 YTD Actual	2011 YTD Var	% Bud vs Act	2010 YTD Actual	10 vs 11 Variance	% Bud vs Act
Non-Departmental							
Revenue							
Debt Service							
Transfers	-	66,203	66,203	100.0%	-	66,203	100.0%
Interfund Transfers							
Transfers	31,458,318	31,663,850	205,532	100.7%	29,080,397	2,583,454	8.9%
Non-Departmental							
Charges for Services	4,400,000	3,380,564	(1,019,436)	76.8%	3,740,885	(360,321)	-9.6%
Intergovernmental Revenue	1,823,037	1,766,321	(56,716)	96.9%	920,494	845,827	91.9%
Licenses & Permits	20,000	36,189	16,189	180.9%	36,978	(790)	-2.1%
Miscellaneous							
Insurance Recoveries	-	-	(0)	0.0%	882	(882)	-100.0%
Int On Checking	5,000	14,866	9,866	297.3%	356	14,510	4080.4%
Interest On Investments	50,000	84,007	34,007	168.0%	58,505	25,501	43.6%
Life Insurance	-	437	437	100.0%	(4)	440	-12233.3%
Net Inc/Dec In Fair Value	-	(161)	(161)	100.0%	(143)	(18)	12.4%
Other	-	44,595	44,595	100.0%	23,716	20,879	88.0%
Other Private Contrib	-	-	(0)	0.0%	5,366	(5,366)	-100.0%
Other-Refund Of Expend	-	-	(0)	0.0%	188,615	(188,615)	-100.0%
Rents From Equipment	296,925	-	(296,925)	0.0%	222,469	(222,469)	-100.0%
Rents From Facilities	-	1,845	1,845	100.0%	1,395	450	32.3%
Rents From Land	-	-	(0)	0.0%	8,124	(8,124)	-100.0%
Restitution District Ct	1,000	1,002	2	100.2%	1,204	(202)	-16.7%
Return Check Charges	-	3,015	3,015	100.0%	3,110	(95)	-3.1%
Royalties	15,000	117,567	102,567	783.8%	126,221	(8,654)	-6.9%
Sales Of Fixed Assets	-	-	(0)	0.0%	427	(427)	-100.0%
Sales Of Other City Asset	-	718	718	100.0%	-	718	100.0%
Health Insurance	-	9	9	100.0%	-	9	100.0%
Oil/Gas Lease	-	139,808	139,808	100.0%	-	139,808	100.0%
Taxes	9,118,000	8,935,814	(182,186)	98.0%	9,162,247	(226,433)	-2.5%
Transfers	-	-	(0)	0.0%	505,540	(505,540)	-100.0%
Revenue Total	47,187,280	46,256,649	(930,631)	98.0%	44,086,782	2,169,867	4.9%
Expenditures							
Debt Service							
Debt Service	-	66,203	(66,203)	100.0%	-	66,203	100.0%
Grants to Outside Agency							
Miscellaneous Ex Grants-Outside Pub Agency	161,395	153,440	7,955	95.1%	147,525	5,915	4.0%
Interfund Transfers							
Operating Transfers	6,420,596	4,285,192	2,135,404	66.7%	2,166,840	2,118,353	97.8%
Non-Departmental							
Salaries & Benefits	320,355	-	320,355	0.0%	17,889	(17,889)	-100.0%
Supplies & Services	563,073	507,606	55,467	90.1%	2,149,925	(1,642,319)	-76.4%
Miscellaneous Ex Bad Debt Expenses	3,000	33,467	(30,467)	1115.6%	10,319	23,148	224.3%
Grants-Outside Pub Agency	202,155	185,309	16,846	91.7%	185,309	-	0.0%
Intergovernmental Agremnt	24,114	24,114	-	100.0%	9,203,294	(9,179,180)	-99.7%
Miscellaneous	-	21,648	(21,648)	100.0%	39,372	(17,724)	-45.0%
Capital	-	-	-	0.0%	551,940	(551,940)	-100.0%
Debt Service	-	-	-	0.0%	(0)	0	-100.0%
Expenditures Total	7,694,688	5,276,980	2,417,708	68.6%	14,472,412	(9,195,433)	-63.5%

Department/Division	2011				2010		
	2011 Total Budget	2011 YTD Actual	2011 YTD Var	% Bud vs Act	2010 YTD Actual	10 vs 11 Variance	% Bud vs Act
Policy & Administration							
Revenue							
City Manager's Office							
Charges for Services	1,500	700	(800)	46.7%	1,078	(378)	-35.1%
Transfers	-	163,559	163,559	100.0%	175,979	(12,420)	-7.1%
Human Resources - Operations							
Charges for Services	-	238	238	100.0%	6	232	3933.9%
Miscellaneous	-	765	765	100.0%	26	739	2832.8%
Life Insurance							
Other Private Contrib	4,504	4,604	100	102.2%	-	4,604	100.0%
Transfers	10,451	69,332	58,881	663.4%	60,865	8,467	13.9%
Law							
Transfers	15,212	24,086	8,874	158.3%	10,231	13,855	135.4%
Legislative							
Charges for Services	-	3,760	3,760	100.0%	321	3,439	1071.5%
Fines & Forfeits	5,000	2,406	(2,594)	48.1%	5,584	(3,178)	-56.9%
Licenses & Permits	29,000	36,825	7,825	127.0%	33,133	3,692	11.1%
Miscellaneous	-	400	400	100.0%	-	400	100.0%
Other Private Contrib							
Transfers	-	31,185	31,185	100.0%	33,609	(2,424)	-7.2%
Municipal Court							
Charges for Services	155,300	155,039	(261)	99.8%	163,533	(8,494)	-5.2%
Fines & Forfeits	2,539,200	2,212,363	(326,837)	87.1%	2,310,129	(97,766)	-4.2%
Miscellaneous	-	(471)	(471)	100.0%	(61)	(410)	672.0%
Cash Over / Short							
Photocopies	500	202	(299)	40.3%	928	(726)	-78.3%
Non-Departmental							
Charges for Services	34,208	63,964	29,756	187.0%	67,475	(3,511)	-5.2%
Miscellaneous	2,000	3,791	1,791	189.6%	3,031	761	25.1%
Interest On Investments							
Net Inc/Dec In Fair Value	-	(7)	(7)	100.0%	(7)	(0)	1.9%
Revenue Total	2,796,875	2,772,742	(24,133)	99.1%	2,865,860	(93,118)	-3.2%
Expenditures							
City Manager's Office							
Salaries & Benefits	468,038	427,731	40,307	91.4%	437,987	(10,256)	-2.3%
Supplies & Services	122,320	95,413	26,907	78.0%	69,918	25,495	36.5%
Human Resources - Operations							
Salaries & Benefits	317,086	284,597	32,489	89.8%	282,139	2,458	0.9%
Supplies & Services	155,421	139,012	16,409	89.4%	107,869	31,143	28.9%
Law							
Salaries & Benefits	751,653	697,268	54,385	92.8%	689,920	7,348	1.1%
Supplies & Services	37,055	24,458	12,597	66.0%	26,429	(1,971)	-7.5%
Legislative							
Salaries & Benefits	361,178	336,174	25,004	93.1%	323,930	12,244	3.8%
Supplies & Services	165,173	148,107	17,066	89.7%	132,501	15,606	11.8%
Miscellaneous	-	-	-	0.0%	500	(500)	-100.0%
Ex Bad Debt Expenses							
Municipal Court							
Salaries & Benefits	538,679	477,701	60,978	88.7%	457,062	20,640	4.5%
Supplies & Services	79,386	91,360	(11,974)	115.1%	83,501	7,859	9.4%
Miscellaneous	30,000	20,000	10,000	66.7%	22,500	(2,500)	-11.1%
Ex Grants-Outside Pub Agency							
Miscellaneous	-	-	-	0.0%	-	-	0.0%
Non-Departmental							
Supplies & Services	221,040	166,104	54,936	75.1%	4,194	161,910	3860.3%
Miscellaneous	-	77	(77)	100.0%	44	34	77.1%
Ex Miscellaneous							
Expenditures Total	3,247,029	2,908,004	339,025	89.6%	2,638,495	269,509	10.2%

Department/Division	2011				2010		
	2011 Total Budget	2011 YTD Actual	2011 YTD Var	% Bud vs Act	2010 YTD Actual	10 vs 11 Variance	% Bud vs Act
Water and Sewer							
Revenue							
Interfund Transfers							
Transfers	2,027,648	1,906,971	(120,677)	94.0%	1,922,708	(15,737)	-0.8%
Non-Departmental							
Miscellaneous							
Insurance Recoveries	-	-	(0)	0.0%	270	(270)	-100.0%
Int On Checking	-	3,829	3,829	100.0%	3,838	(9)	-0.2%
Interest On Investments	65,902	34,276	(31,626)	52.0%	35,292	(1,016)	-2.9%
Net Inc/Dec In Fair Value	-	(85)	(85)	100.0%	(99)	14	-14.5%
Transfers	123,412	128,690	5,278	104.3%	117,801	10,889	9.2%
Sewer General Management							
Charges for Services	8,525,191	7,852,513	(672,678)	92.1%	7,244,951	607,561	8.4%
Licenses & Permits	500	2,574	2,074	514.7%	2,160	414	19.2%
Miscellaneous							
Int On Checking	-	934	934	100.0%	-	934	100.0%
Rents From Facilities	-	5,398	5,398	100.0%	-	5,398	100.0%
Rents From Land	4,000	3,015	(985)	75.4%	2,244	772	34.4%
Royalties	71,000	94,372	23,372	132.9%	67,538	26,834	39.7%
Sales Of Fixed Assets	-	-	(0)	0.0%	2,705	(2,705)	-100.0%
Transmission/Distribution							
Charges for Services	733,306	983,884	250,578	134.2%	1,095,195	(111,312)	-10.2%
Miscellaneous							
Damages Recovered	-	774	774	100.0%	1,031	(257)	-24.9%
Rents From Equipment	-	1,700	1,700	100.0%	-	1,700	100.0%
Sales Of Fixed Assets	-	-	(0)	0.0%	2,970	(2,970)	-100.0%
Sales Of Other City Asset	-	17,704	17,704	100.0%	-	17,704	100.0%
Treatment and Supply							
Charges for Services	494,275	403,539	(90,736)	81.6%	495,409	(91,870)	-18.5%
Miscellaneous							
Other	-	30,851	30,851	100.0%	18,226	12,625	69.3%
Sales Of Fixed Assets	-	-	(0)	0.0%	2,783	(2,783)	-100.0%
Wastewater Collection							
Charges for Services	15,000	37,685	22,685	251.2%	8,714	28,970	332.4%
Wastewater Treatment							
Charges for Services	27,500	151,964	124,464	552.6%	76,396	75,568	98.9%
Water General Management							
Charges for Services	27,635,601	26,156,690	(1,478,911)	94.6%	23,854,414	2,302,276	9.7%
Licenses & Permits	500	12,578	12,078	2515.6%	15,816	(3,238)	-20.5%
Miscellaneous							
Insurance Recoveries	-	293	293	100.0%	-	293	100.0%
Int On Checking	-	5,517	5,517	100.0%	-	5,517	100.0%
Other	-	-	(0)	0.0%	1,633	(1,633)	-100.0%
Rents From Land	22,000	62,910	40,910	286.0%	63,087	(177)	-0.3%
Royalties	-	310	310	100.0%	-	310	100.0%
Sales Of Fixed Assets	-	3,985	3,985	100.0%	2,705	1,280	47.3%
Revenue Total	39,745,835	37,902,870	(1,842,965)	95.4%	35,037,787	2,865,084	8.2%
Expenditures							
Debt Service							
Debt Service	4,124,698	2,425,697	1,699,001	58.8%	2,508,746	(83,049)	-3.3%
Depreciation							
Depreciation	5,887,000	4,273,957	1,613,043	72.6%	4,317,956	(43,999)	-1.0%
Interfund Transfers							
Operating Transfers	9,825,538	11,997,678	(2,172,140)	122.1%	11,043,808	953,870	8.6%
Non-Departmental							
Salaries & Benefits	-	13,072	(13,072)	100.0%	6,945	6,126	88.2%
Supplies & Services	-	14,725	(14,725)	100.0%	18,817	(4,092)	-21.7%
Miscellaneous Ex Miscellaneous	-	866	(866)	100.0%	532	334	62.7%
Capital	205,125	186,045	19,080	90.7%	-	186,045	100.0%
Sewer General Management							
Salaries & Benefits	261,463	156,782	104,681	60.0%	158,330	(1,548)	-1.0%
Supplies & Services	418,600	370,061	48,539	88.4%	371,455	(1,393)	-0.4%
Transmission/Distribution							
Salaries & Benefits	1,832,745	1,606,958	225,787	87.7%	1,523,135	83,823	5.5%
Supplies & Services	1,350,416	996,254	354,162	73.8%	992,698	3,556	0.4%
Miscellaneous Ex Bad Debt Expenses	-	-	-	0.0%	(74)	74	-100.0%
Capital	-	30,132	(30,132)	100.0%	-	30,132	100.0%
Treatment and Supply							
Salaries & Benefits	2,554,756	2,127,570	427,186	83.3%	2,050,724	76,846	3.7%
Supplies & Services	7,336,202	6,428,363	907,839	87.6%	5,253,170	1,175,193	22.4%
Miscellaneous Ex Grants-Outside Pub Agency	7,500	330	7,170	4.4%	-	330	100.0%
Intergovernmental Agremnt	83,329	-	83,329	0.0%	37,145	(37,145)	-100.0%
Wastewater Collection							
Salaries & Benefits	828,609	638,051	190,558	77.0%	627,155	10,896	1.7%
Supplies & Services	255,574	155,970	99,604	61.0%	165,574	(9,603)	-5.8%
Wastewater Treatment							
Salaries & Benefits	1,610,301	1,428,777	181,524	88.7%	1,407,008	21,769	1.5%
Supplies & Services	1,194,363	982,232	212,131	82.2%	997,372	(15,139)	-1.5%
Miscellaneous Ex Bad Debt Expenses	-	(26)	26	100.0%	-	(26)	100.0%
Water General Management							

Department/Division	2011				2010		
	2011 Total Budget	2011 YTD Actual	2011 YTD Var	% Bud vs Act	2010 YTD Actual	10 vs 11 Variance	% Bud vs Act
Salaries & Benefits	1,339,344	1,118,362	220,982	83.5%	1,143,490	(25,129)	-2.2%
Supplies & Services	1,008,420	851,894	156,526	84.5%	741,594	110,300	14.9%
Miscellaneous Ex Bad Debt Expenses	10,000	(6,509)	16,509	-65.1%	17,499	(24,008)	-137.2%
Grants-Outside Pub Agency	-	1,750	(1,750)	100.0%	-	1,750	100.0%
Capital	45,566	39,134	6,432	85.9%	-	39,134	100.0%
Expenditures Total	40,179,549	35,838,126	4,341,423	89.2%	33,383,079	2,455,046	7.4%