

Addendum #1



Capital Project Committee

Project Information

Project Name:	Phase 1.0 - Centennial Park Improvements
Bid Number:	FD21-02-038
Date:	March 10, 2021
Project Manager:	Brian Ward

Addendum Items

Due to the corona-virus, the City is requiring the following for submitting bids and the opening of bids:

See below for Bid Opening Instructions - Wednesday, March 17, 2020 at 2:00pm

Join Zoom Meeting

<https://greeleygov.zoom.us/j/88969964853>

Meeting ID: 889 6996 4853

Passcode: 972520

Dial by your location

+1 346 248 7799 US (Houston)

+1 669 900 6833 US (San Jose)

+1 253 215 8782 US (Tacoma)

CLARIFICATIONS

Use 3000k instead of 4000k in the luminaire schedule on Sheet EO.O.

A fiber optic will be installed for the City of Greeley's Water and Sewer Departments intercom and security camera system. A camera will be installed by others at the gates that are used to access the reservoirs. The contractor shall coordinate with the installer during construction.

An earthwork tabulation is attached for additional clarification.

A flatwork permit will be required prior to installing concrete or asphalt. This can be applied for via eTrakit.

Item 1	<p>It is the intent of the City of Greeley to continue usage of Centennial Pool, Butch Butler Baseball field and the tennis courts throughout the lifecycle of the project. Of the two existing parking lots for the park, northern lot in the vicinity of the tennis courts and southern lot in between the baseball field and pool, only one of these parking lots may be closed for public use at one time. It is acceptable to have the public park on road base / dirt material. Pedestrian access must be maintained throughout the project for the pool, baseball field, and tennis courts.</p>
Item 2	<p>Security and fences must be maintained at all times for the water reservoir.</p>
Item 3	<p>Vehicular drop off access must be maintained to the Centennial Pool during construction. Vehicular access may utilize road base roadways. Vehicular access may be reduced for limited amounts of time with the permission of the City Project Manager. All pedestrian walkways to the pool, Butch Butler field, and tennis courts must be ADA compliant and have a hard surface. Road base / compacted dirt is allowable as a hard surface</p>
Item 4	<p>Site Furnishing substitution request :</p> <p>The winning bidder is responsible for selection of the exact items to be used for the project therefore the City cannot grant a substitution request until we know which item will be used by the contractor. We would encourage the Manufacturer to contact the winning bidder and communicate the substitution with them, at which time we will consider the substitution.</p>
Item 5	<p>Is the landscape included in this phase or phase 2?</p> <p>The landscaping is primarily included in Phase 2</p>
Item 6	<p>Are there any auto cad files for this project so that we can get an accurate takeoff for the paving?</p> <p>The City only distributes AutoCAD files to the winning bidder, as these require an agreement between the construction company and the designer. For purposes of the bid we ask that all bidders use the same bid tab so that all the bids are equal in quantity. If discrepancies are found between the CAD file and bid tab these will be resolved at the bid unit rate.</p>
Item 7	<p>Can you please provide details for the waterline lowering's</p> <p>Please see attached for watermain lowering information.</p>
Item 8	<p>Will irrigation repairs be performed by the contractor or the city?</p> <p>Usually the City performs irrigation repairs when contractors hit existing lines. However with new irrigation going in I don't see any need to perform repairs on irrigation that is being removed. I guess maybe say something like the City will be responsible for repairs on existing irrigation lines that are to remain?</p>
Item 9	<p>The tree protection spec calls for topsoil and mulching, is this required or just root zone protection fencing?</p> <p>No, this is not required, only root zone protection is required.</p>

Item 10	<p>Concerning the automatic gate for this project. Are there available docs and drawings and did not see much in the way of specifications on the gate and gate operator. Is there anything showing the specs.</p> <p>This a remove and reset item. The removing and resetting of the gate requires all labor, materials, and incidentals to remove the existing gate and reset it at the new location. This includes, but not limited to, wiring, detection loops, keypad, conduits, etc for a fully functional automatic gate.</p>
Item 11	<p>When reading the specification and was not able to find the motor operator and controls specification for this project?</p> <p>See response to item 10.</p>
Item 12	<p>Reservoir road access shows multiple asphalt sections</p> <ul style="list-style-type: none"> o 2" of asphalt with 64-28 oil on top mat and 3" of asphalt with 64-22 oil on bottom o 2" of asphalt with 64-28 oil on top, and 2" of asphalt with 64-22 oil on bottom o 4" of asphalt with 64-28 oil top and bottom <p>o We would like to have some clarification on this as this seems like a lot of different thicknesses and a lot of different oils, and there are not pay items for the 64-22 asphalt oil.</p> <p>Hot Mix Asphalt Pavement (Gr. SX) (75) (PG 64-22) will be used everywhere.</p>
Item 13	<p>What exactly is going to be required for the waterline lowerings?</p> <ul style="list-style-type: none"> o How many feet of pipe are to be installed o What material is to be used for the lowering pipe <p>See response to Item 7.</p>
Item 14	<p>North parking lot demo is asking for neatline sawcutting and removal of asphalt, however there are some radius' shown on this sawcutting should any additional asphalt patching required be paid as asphalt patching or would that be incidental.</p> <p>It will be paid as asphalt patch.</p>
Item 15	<p>The geogrid stabilization under the asphalt paving seems to have too little cover, in my prior experience the geogrid has required 12" of road base over the geogrid. These plans are only showing 6" of road base over geogrid.</p> <p>Per recommendations from the geotechnical engineer, six inches of cover is adequate.</p>
Item 16	<p>Detectable Warnings are Quantified as 36 ea.</p> <p>Do all ramps include the same dimension of warning plate?</p> <p>Detectable warnings have been added to the bid items and will be paid as square feet.</p> <p>If not, could you change the unit per SF?</p> <p>see revised bid tab</p>

Item 17 Curb and Gutter-6" Monolithic is Quantified as 6827 LF

Is this unit price only for the Curb? or is it to include the Walk?

Curb and Gutter-6" Monolithic quantity is for the curb and gutter ONLY. The Sidewalk will be paid for separately. Detectable warnings have been changed to a SF quantity.

Item 18 no Typical Section that denotes "Monolithic" -meaning Curb & Walk?

See response to Item 17.

Item 19 Please provide information on the Geogrid Pavement Reinforcement.

The geogrid reinforcement shall be Tensar BX1100.

Item 20 Where on the plans is the reset fence located?

The reset fence is a portion of the 7 foot high industrial fence with 3 stand bw on the top and is located along the east side of the reservoir property or west side of Centennial Park.

Item 21 What are the quantities of each type of gate? Height and width?

See attached gate summary. Gates are not paid by separately but included in the length of fence.

Item 22 Plans reflect more lineal footage than the tab sheets. Which is correct?

The correct footage for 7' high new industrial fence is 470 feet and includes one 6 foot wide gate at the existing entrance. See attached detail for the 7' high fence.

Item 23 Can you clarify what you mean by clearing limit?

Removal of topsoil, limits of construction areas.

Item 24 Who is going to be in charge of the permitting?

The contractor is responsible for all permitting however all fees for City permits will be waived.

Item 25 What is the expected start date for this project?

May 1st 'ish

Item 26 Will we need to do this phase in sections, to keep parking open?

One parking lot must remain open at all times with ADA compliant pedestrian walkways to the baseball field, tennis courts, and pool area. Parking on dirt / base material is acceptable.

Item 27 Is this tax exempt?

Yes – the project is tax exempt.

Item 28 2 year warranty?

Yes

Item 29 GC is to handle testing, ie. Sitework, concrete, asphalt etc.

GC is responsible for Quality Control testing, the City will supply quality assurance testing.

Item 30 Liquidated damages?

Yes - \$4,100 per day

CENTENNIAL PARK PHASE 1 BID PACKAGE SUBMITTAL- BID TAB - Revised

CONTRACT ITEM NO.	MGPEC ITEM NO.	CONTRACT ITEM	UNIT	PROJECT TOTALS	ITEM COST	TOTAL COST
CIVIL ITEMS						
1010		MOBILIZATION	LS	1		
1010		CONSTRUCTION SURVEYING	LS	1		
1010		TRAFFIC CONTROL, MANAGEMENT, DEVICES, FLAGGING	LS	1		
1010		POTHOLING	HR	48		
2210		RELOCATION OF EXISTING TAP, METER, BACKFLOW, ETC.	EA	1		
2210		RESET 7 FOOT BARBED WIRE FENCE	LF	368		
2220		REMOVE CHAIN LINK FENCE	LF	1,655		
2220		REMOVE HEDGE / SHRUB	EA	20		
2220	1	REMOVAL OF ASPHALT PAVEMENT	SY	13,297		
2220	1	REMOVAL OF CONCRETE	SY	1,950		
2220		REMOVAL OF CURB AND GUTTER	LF	1,000		
2220		REMOVE AND RESET LIGHT POLES	EA	3		
2220		REMOVE AND RESET GROUND SIGN PANEL AND POST	EA	4		
2225		UNCLASSIFIED EXCAVATION (COMPLETE IN PLACE)	CY	2,294		
2225		IMPORT EMBANKMENT MATERIAL (R VALUE >40)	CY	350		
2227		SUB-BASE	CY	250		
2229	13	AGGREGATE BASE COURSE	TON	3,841		
2420		GEOGRID PAVEMENT REINFORCEMENT	SY	10,004		
2514		PEDESTRIAN RAILING	LF	7		
2575	20	HOT MIX ASPHALT PATCH (GR.SX)(75)(PG 64-22)(7-INCH)	TON	45		
2575	20	HOT MIX ASPHALT PAVEMENT (GR.SX)(75)(PG 64-22)	TON	3,077		
2603		12 INCH HDPE (COMPLETE IN PLACE)	LF	50		
2603		12 INCH HDPE FLARED END SECTION	EA	2		
2603		3 INCH IRRIGATION MAINLINE PIPE	LF	140		
2603		8 INCH NON-POTABLE DISTRIBUTION PIPE	LF	460		
2603		24 INCH SLEEVING	LF	20		
2603		2 INCH SLEEVING	LF	20		
2604		ORIFICE PLATE (8" OPENING)	EA	1		
2604		10 INCH PLASTIC PIPE (POLYVINYL CHLORIDE)	LF	34		
2607		INDUSTRIAL FENCING WITH BARBED WIRE	LF	470		
2607		6 FOOT CHAIN LINK FENCE (WITH GATES)	LF	550		
2607		6 FOOT CHAIN LINK FENCE (TEMPORARY)	LF	690		
2607		8 FOOT CHAIN LINK INFIELD FENCE (W GATES)	LF	500		
2607		RELOCATE EXISTING AUTOMATIC ELECTRIC GATE	EA	1		
2608		DETECTABLE WARNING	SF	512		
2610		ADJUST WATER VALVE BOX	EA	2		
2610		ADJUST SANITARY SEWER MANHOLE	EA	1		
2611		WATER MAIN LOWERING	EA	4		
2613		CONCESSION BUILDING / BALLFIELD SERVICE RE-FEED	LS	1		
2613		PARKING LOT LIGHTING SYSTEM	LS	1		
2613		DEMOLITION (ELECTRIC)	LS	1		
2618		GROUND SIGN PANEL AND POST - R3-7R	EA	1		
2618		PAVEMENT MARKING PAINT	GAL	28		
2618		PREFORMED THERMOPLASTIC PAVEMENT MARKING (90 MILS)	SF	819		
2619		BLOWOFF ASSEMBLY	EA	4		
2620		MATERIAL STORAGE BINS	EA	2		
2622		BENCHES	EA	4		
2622		BLEACHERS (TENNIS)	EA	4		
2622		BIKE RACK	EA	2		
2622		BULLPEN EQUIPMENT (MOUND, PITCHING RUBBER, HOME PLATE)	EA	2		
2622		BULLPEN CAGES (FRAME, NETTING, FOUNDATION, INFIELD MIX)	EA	2		
2623		2 INCH IRRIGATION SLEEVING	LF	1,780		
2623		6 INCH IRRIGATION SLEEVING	LF	280		
2623		12 INCH IRRIGATION SLEEVING	LF	60		
2623		14 INCH IRRIGATION SLEEVING	LF	180		
2623		16 INCH IRRIGATION SLEEVING	LF	100		
2700		MISCELLANEOUS IRRIGATION REPAIR AS NEEDED	EA	1		
2808		AGGREGATE BAG	LF	258		
2810		EROSION LOG TYPE 1 (12 INCH)	LF	4,437		
2810		VEHICLE TRACKING PAD	EA	3		
2810		CONCRETE WASHOUT STRUCTURE	EA	1		
2810		INLET PROTECTION	EA	2		
3310		SIDEWALK CHASE DRAIN (24 INCH WIDE)	EA	5		
3310		SIDEWALK CHASE DRAIN (48 INCH WIDE)	EA	1		
3310		CONCRETE CURB RAMP MID-BLOCK	EA	4		
3310		CORNER CURB ADA RAMP	EA	32		
3310	31	CONCRETE PAVEMENT (8 INCH)	SY	328		
3310	31	CONCRETE SIDEWALK (5 INCH)	SY	5,037		
3310	31	CURB AND GUTTER TYPE 2 (SECTION MS)	LF	63		
3310	31	CURB AND GUTTER - VERTICAL FACE	LF	664		
3310	31	CONCRETE CURB AND GUTTER - 6" MONOLITHIC	LF	6,827		
3310		CONCRETE MOW BAND AT FENCING (6"Hx18"W)	LF	1,690		
					TOTAL BID	

Total Bid (written out): _____

Vendor Name: _____

Authorized Signature: _____

Print Name: _____

Phone Number: _____

Fax Number: _____

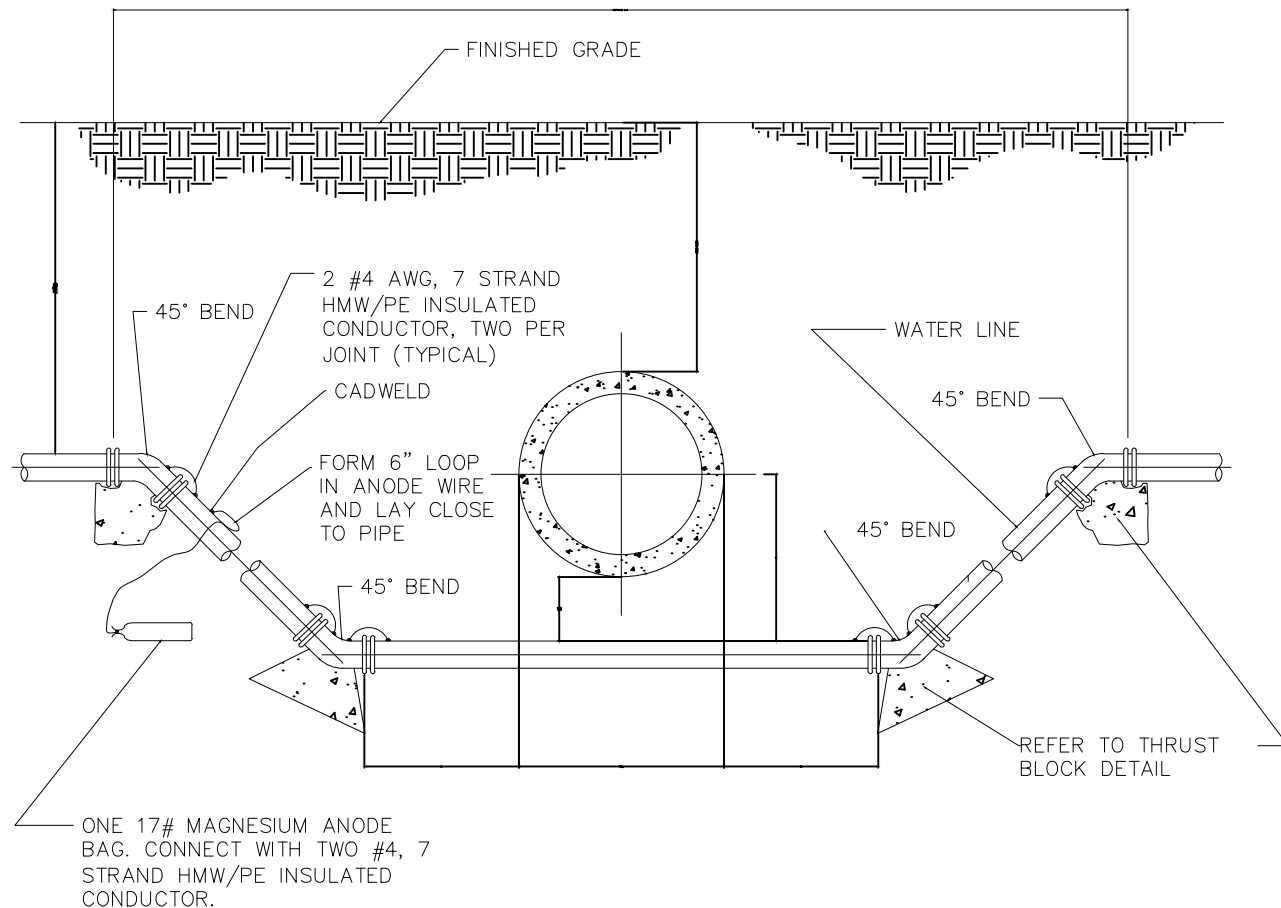
Email Address: _____

Date: _____

CENTENNIAL PARK PHASE 1 CUT / FILL TABULATION

LOCATION	CUT (CY)	FILL (CY)	BALANCE (CY) (-)=IMPORT (+)=EXPORT
RESERVOIR RD ACCESS	876	1,020	-144
SOUTH LOT	120	384	-264
23RD AVE SOUTH ACCESS	263	86	177
BOYSCOUTS TURNLANE	100	316	-216
NORTH LOT	14	141	-127
23RD AVE NORTH ACCESS	352	440	-88
SOUTH DETENTION POND	569	157	412
BOYSCOUTS BERM	0	100	-100
TOTAL	2,294	2,644	-350

NOTE:**1) AN IMPORT OF 350 CY IS REQUIRED**



NOTES:

1. PIPE MAY BE RESTRAINED BY MECHANICAL JOINT PIPE RESTRAINTS OR RESTRAINED JOINT PIPE.
2. CONDUCTOR WIRE SHALL BE CAD WELDED TO PIPE, BOTH ENDS, OR BONDING STRAP BOLTED TO PIPE. WIRE SHALL HAVE A MINIMUM OF 2" SLACK.
3. ANODE SHALL BE COVERED WITH FINE SOIL CONTAINING NO ROCKS OR DIRT CLUMPS. SOIL SHALL BE COMPACTED AROUND ANODE.
4. CONSTRUCT CADWELD CONNECTIONS PER WATER AND SEWER STANDARD DRAWINGS AND CONSTRUCTION SPECIFICATIONS.

WATER MAIN LOWERING TABLE			
LOCATION	TYPE OF PIPE	LINEAR FEET OF PIPE (FT)	DEPTH TO BE LOWERED (FT)
EAST DETENTION SWALE/POND STA: 1+60.65	24" STEEL CTE	25	3
DETENTION SWALE/POND STA: 3+81.31	20" CEMENT LINED CAST IRON	17	3

EACH PIPE SHALL BE POTHOLED PRIOR TO LOWERING TO VERIFY DEPTH.



WATER LINE LOWERING

DETAIL NO. W-5

DATE: JANUARY, 2008

SCALE: N.T.S.

GATE TABULATION	
WIDTH & HEIGHT	Quantity
4' W x 8' H	4
12' W x 6' H	2
12' W x 8' H	6

Gates are not paid for separately but included in the cost of the fence.