



The City of Greeley Control Network

GIS Reference No: 213

Pin ID: Unknown

Cap ID: 2637

State/County: CO/Weld



Horizontal Datum - NAD83/92 - HARN (High Accuracy Reference Network) Based
(SPCS) State Plane Coordinate System Colorado North Zone 0501 US Survey Feet
Ellipsoid GRS 80 - (Geodetic Referenc System of 1980)

Vertical Datum - NAVD 88 - (North American Vertical Datum of 1988)

Surveyed Location & Height - US Feet (Adjusted)

NAVD88 Elev: 5,091.68

NAVD29 Elev: ----

Northing 83 Feet: ----

Easting 83 Feet: ----

GIS Map Position -

(GIS position values for X, Y and Lat, Long are derived from desktop mapping product; they do not guarantee accuracy and should not be used for engineering purposes.)

GIS X Coordinate: 3,175,567.08

GIS Y Coordinate: 1,381,139.12

Latitude: 40d22'40.5"N

Longitude: 104d52'11.36"W

Dates -

Date of Install:

Date of Survey:

Date of Recovery:

Types -

Monument Type: ----

Benchmark Type: Section Corner

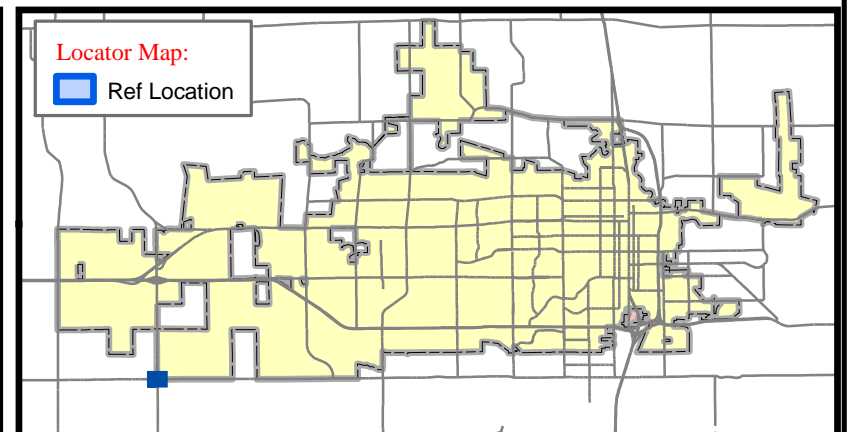
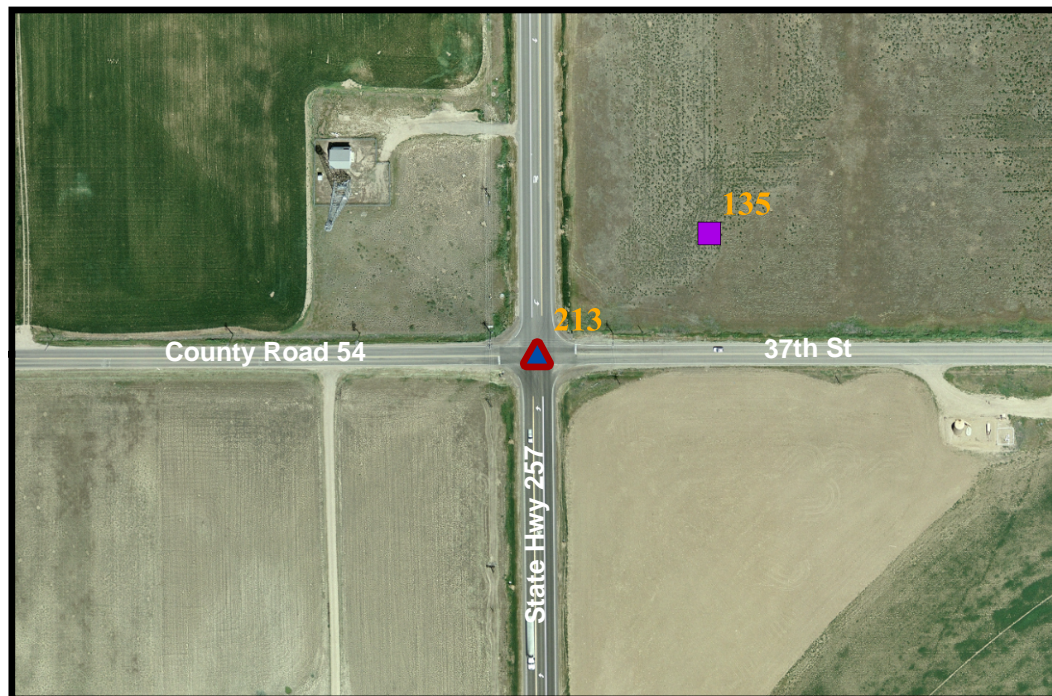
NGVD 29 to NAVD 88 Conversion -

Scale Factor: 0.999959302

Combined Factor: 0.999715820

Convergence: 0 24' 25.84705"

Scale: 1 inch equals 300 feet



- | | |
|---------------------------------|------------------------|
| CITY BENCHMARK | US GEOLOGICAL SURVEY |
| COLORADO DEPT OF TRANSPORTATION | QUARTER QUARTER |
| HARN POINT | QUARTER SECTION CORNER |
| NATIONAL GEODETIC SURVEY | SECTION CORNER |

Contact: ----- The City of Greeley GIS Program, 1010 6th St, Greeley, CO 80631, (970) 350-9787

Description:

Publication Date: 1/24/2007 12:00:00 AM