

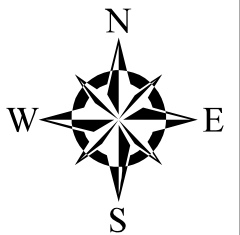
The City of Greeley Control Network

GIS Reference No: 26

Pin ID: Unknown

Cap ID: 6

State/County: CO/Weld



Horizontal Datum - NAD83/92 - HARN (High Accuracy Reference Network) Based
(SPCS) State Plane Coordinate System Colorado North Zone 0501 US Survey Feet
Ellipsoid GRS 80 - (Geodetic Referenc System of 1980)

Vertical Datum - NAVD 88 - (North American Vertical Datum of 1988)

Surveyed Location & Height - US Feet (Adjusted)

NAVD88 Elev: 4,647.71

NAVD29 Elev: 4,644.80

Northing 83 Feet: ----

Easting 83 Feet: ----

GIS Map Position -

(GIS position values for X, Y and Lat, Long are derived from desktop mapping product; they do not guarantee accuracy and should not be used for engineering purposes.)

GIS X Coordinate: 3,226,326.26

GIS Y Coordinate: 1,398,690.51

Latitude: 40d25'29.85"N

Longitude: 104d41'13.41"W

Dates -

Date of Install: 00/01/2002

Date of Survey: 00/23/2002

Date of Recovery: 00/23/2002

Types -

Monument Type: Aluminum 3 1/4" Disk

Benchmark Type: City Benchmark

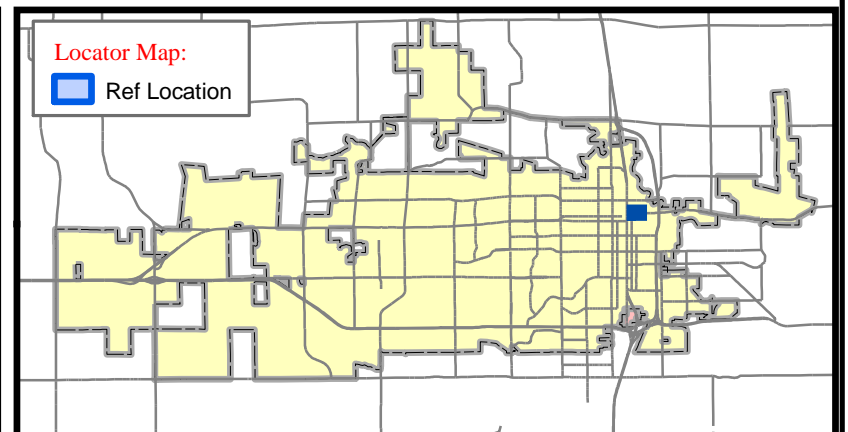
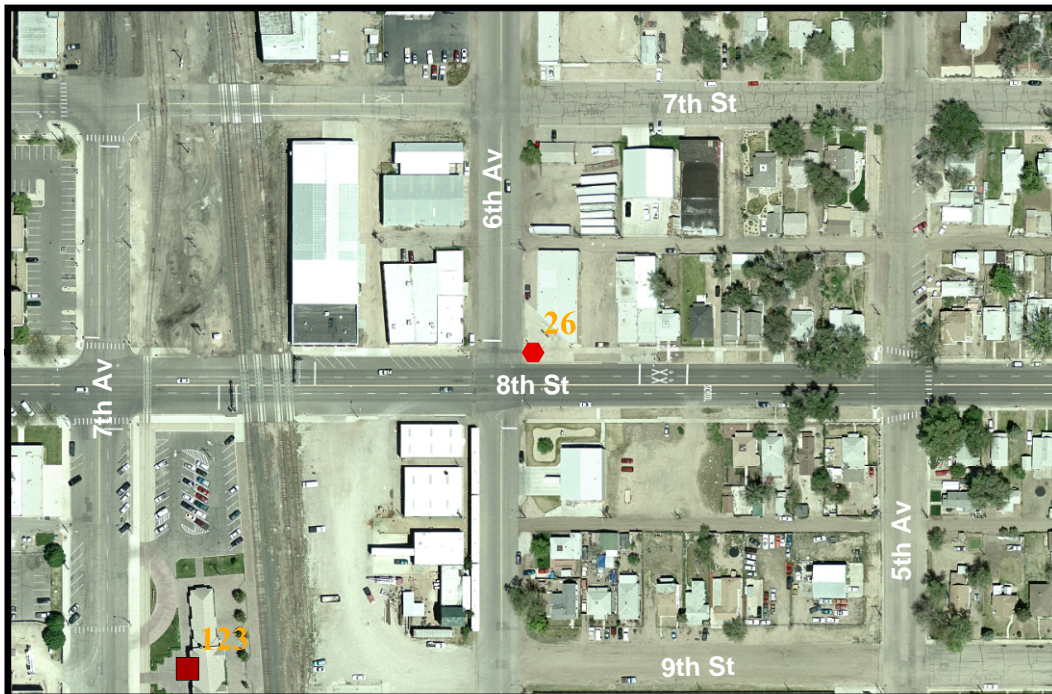
NGVD 29 to NAVD 88 Conversion -

Scale Factor: 0.999961456

Combined Factor: 0.999739200

Convergence: 0 31' 30.96872"

Scale: 1 inch equals 300 feet



- | | |
|---------------------------------|------------------------|
| CITY BENCHMARK | US GEOLOGICAL SURVEY |
| COLORADO DEPT OF TRANSPORTATION | QUARTER QUARTER |
| HARN POINT | QUARTER SECTION CORNER |
| NATIONAL GEODETIC SURVEY | SECTION CORNER |

Contact: ----- The City of Greeley GIS Program, 1010 6th St, Greeley, CO 80631, (970) 350-9787

Description: Located at the north east corner of 8th st and 6th Ave.

Publication Date: 1/24/2007 12:00:00 AM