

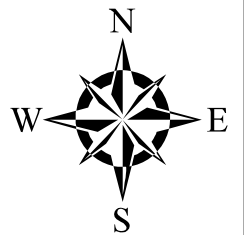
The City of Greeley Control Network

GIS Reference No: 280

Pin ID: Unknown

Cap ID: Unknown

State/County: CO/Weld



Horizontal Datum - NAD83/92 - HARN (High Accuracy Reference Network) Based
(SPCS) State Plane Coordinate System Colorado North Zone 0501 US Survey Feet
Ellipsoid GRS 80 - (Geodetic Referenc System of 1980)

Vertical Datum - NAVD 88 - (North American Vertical Datum of 1988)

Surveyed Location & Height - US Feet (Adjusted)

NAVD88 Elev: 4,667.71

NAVD29 Elev: 4,664.81

Northing 83 Feet: ----

Easting 83 Feet: ----

GIS Map Position -

(GIS position values for X, Y and Lat, Long are derived from desktop mapping product; they do not guarantee accuracy and should not be used for engineering purposes.)

GIS X Coordinate: 3,234,161.52

GIS Y Coordinate: 1,402,513.28

Latitude: 40d26'06.91"N

Longitude: 104d39'31.63"W

Scale: 1 inch equals 300 feet

Dates -

Date of Install:

Date of Survey: 00/28/1993

Date of Recovery:

Types -

Monument Type: Aluminum 2 1/2" Disk

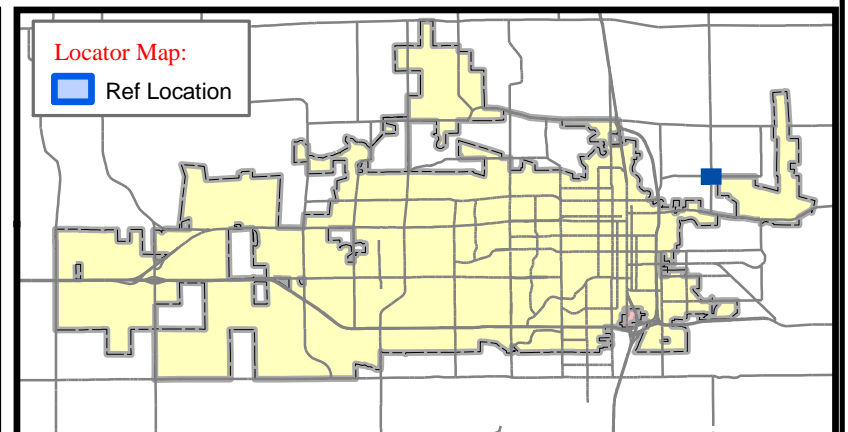
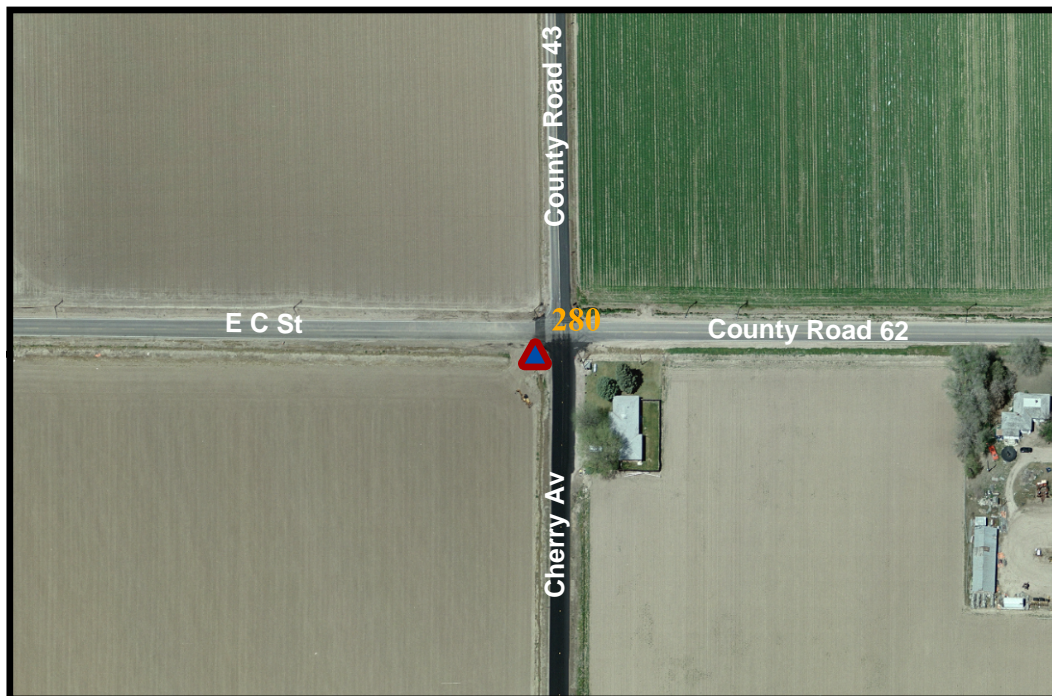
Benchmark Type: Section Corner

NGVD 29 to NAVD 88 Conversion -

Scale Factor: 0.999962017

Combined Factor: 0.999738804

Convergence: 0 32' 36.73190"



- | | |
|---------------------------------|------------------------|
| CITY BENCHMARK | US GEOLOGICAL SURVEY |
| COLORADO DEPT OF TRANSPORTATION | QUARTER QUARTER |
| HARN POINT | QUARTER SECTION CORNER |
| NATIONAL GEODETIC SURVEY | SECTION CORNER |

Contact: ----- The City of Greeley GIS Program, 1010 6th St, Greeley, CO 80631, (970) 350-9787

Description:

Publication Date: 1/24/2007 12:00:00 AM