



# The City of Greeley Control Network

GIS Reference No: 281

Pin ID: Unknown

Cap ID: Unknown

State/County: CO/Weld



Horizontal Datum - NAD83/92 - HARN (High Accuracy Reference Network) Based  
(SPCS) State Plane Coordinate System Colorado North Zone 0501 US Survey Feet  
Ellipsoid GRS 80 - (Geodetic Referenc System of 1980)

Vertical Datum - NAVD 88 - (North American Vertical Datum of 1988)

## Surveyed Location & Height - US Feet (Adjusted)

NAVD88 Elev: 4,668.74

NAVD29 Elev: 4,665.80

Northing 83 Feet: ----

Easting 83 Feet: ----

## GIS Map Position -

(GIS position values for X, Y and Lat, Long are derived from desktop mapping product; they do not guarantee accuracy and should not be used for engineering purposes.)

GIS X Coordinate: 3,218,266.14

GIS Y Coordinate: 1,403,133.15

Latitude: 40d26'14.47"N

Longitude: 104d42'57.12"W

## Dates -

Date of Install:

Date of Survey:

Date of Recovery: 00/27/1990

## Types -

Monument Type: Rebar

Benchmark Type: Section Corner

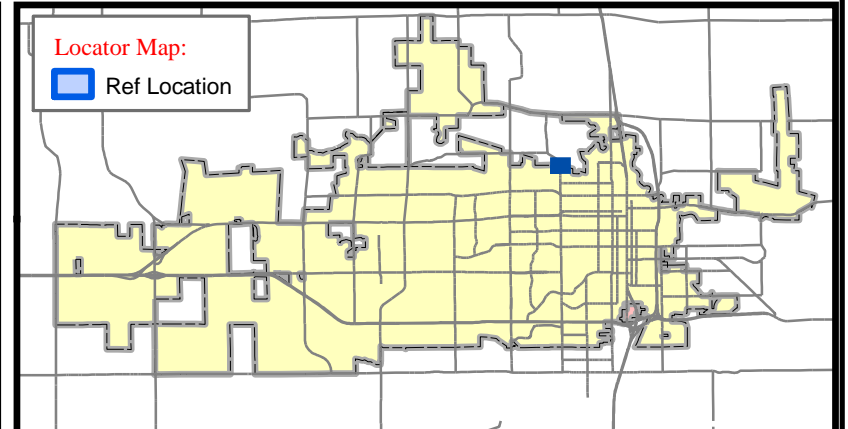
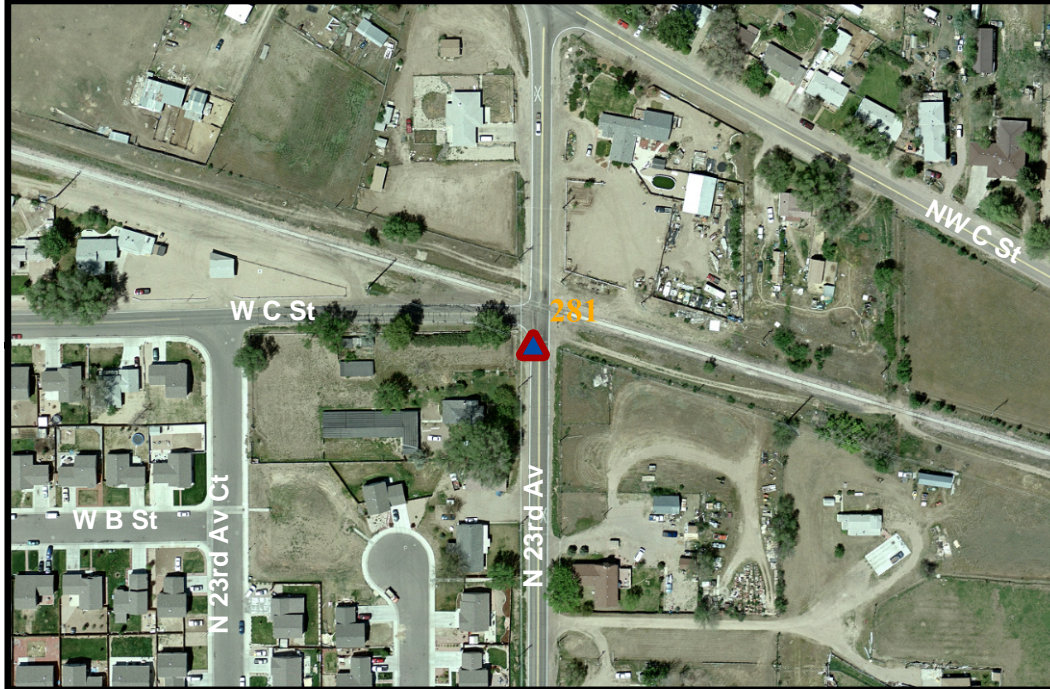
## NGVD 29 to NAVD 88 Conversion -

Scale Factor: 0.999962136

Combined Factor: 0.999738873

Convergence: 0 30' 23.95783"

Scale: 1 inch equals 300 feet



- |                                 |                        |
|---------------------------------|------------------------|
| CITY BENCHMARK                  | US GEOLOGICAL SURVEY   |
| COLORADO DEPT OF TRANSPORTATION | QUARTER QUARTER        |
| HARN POINT                      | QUARTER SECTION CORNER |
| NATIONAL GEODETIC SURVEY        | SECTION CORNER         |

Contact: ----- The City of Greeley GIS Program, 1010 6th St, Greeley, CO 80631, (970) 350-9787

## Description:

Publication Date: 1/24/2007 12:00:00 AM