



The City of Greeley Control Network

GIS Reference No: 290

Pin ID: Unknown

Cap ID: QSECT

State/County: CO/Weld



Horizontal Datum - NAD83/92 - HARN (High Accuracy Reference Network) Based
(SPCS) State Plane Coordinate System Colorado North Zone 0501 US Survey Feet
Ellipsoid GRS 80 - (Geodetic Referenc System of 1980)

Vertical Datum - NAVD 88 - (North American Vertical Datum of 1988)

Surveyed Location & Height - US Feet (Adjusted)

NAVD88 Elev: 4,786.89

NAVD29 Elev: 4,783.41

Northing 83 Feet: 1,400,058.96

Easting 83 Feet: 3,202,084.81

GIS Map Position -

(GIS position values for X, Y and Lat, Long are derived from desktop mapping product; they do not guarantee accuracy and should not be used for engineering purposes.)

GIS X Coordinate: 3,202,084.81

GIS Y Coordinate: 1,400,058.96

Latitude: 40d25'45.46"N

Longitude: 104d46'26.71"W

Dates -

Date of Install: 00/17/1970

Date of Survey: 00/17/1970

Date of Recovery:

Types -

Monument Type: Aluminum 3 1/4" Disk

Benchmark Type: Quarter Section Corner

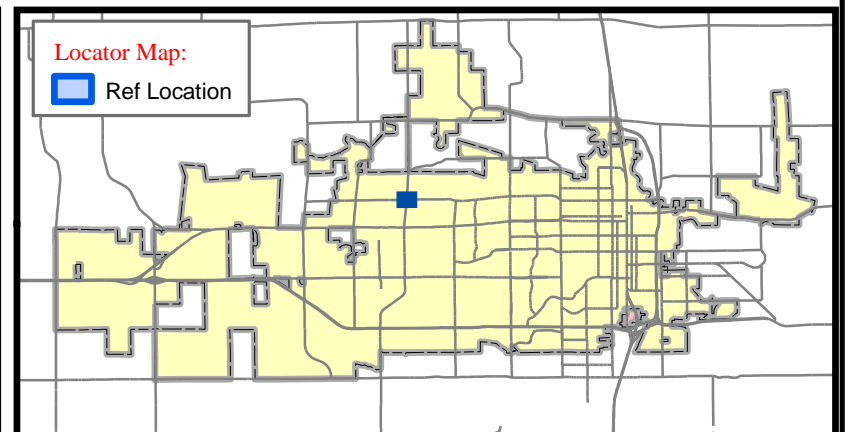
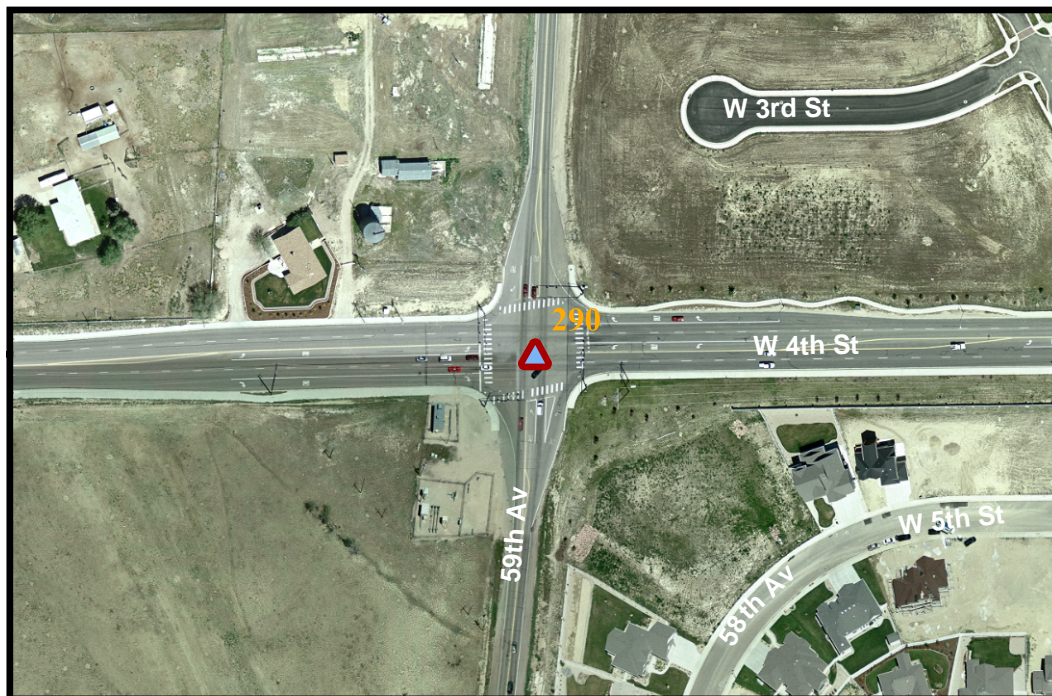
NGVD 29 to NAVD 88 Conversion -

Scale Factor: 0.999961689

Combined Factor: 0.999732778

Convergence: 0 28' 08.53320"

Scale: 1 inch equals 300 feet



- | | |
|---------------------------------|------------------------|
| CITY BENCHMARK | US GEOLOGICAL SURVEY |
| COLORADO DEPT OF TRANSPORTATION | QUARTER QUARTER |
| HARN POINT | QUARTER SECTION CORNER |
| NATIONAL GEODETIC SURVEY | SECTION CORNER |

Contact: ----- The City of Greeley GIS Program, 1010 6th St, Greeley, CO 80631, (970) 350-9787

Description: Located in a range box at the intersection of 4th Street, and 59th Ave. This monument is assumed to be the southeast corner of the northeast quarter section| of T5NR66WS04.

Both horizontal (gps) and vertical (digital level) coordinate| values were provided by Contract Surveyors, LTD. 5/95.| [NE 1/4 OF T5NR66WS04]

Publication Date: 1/24/2007 12:00:00 AM