



# The City of Greeley Control Network

GIS Reference No: 302

Pin ID: Unknown

Cap ID: QSECT

State/County: CO/Weld



**Horizontal Datum -** NAD83/92 - HARN (High Accuracy Reference Network) Based  
(SPCS) State Plane Coordinate System Colorado North Zone 0501 US Survey Feet  
Ellipsoid GRS 80 - (Geodetic Referenc System of 1980)

**Vertical Datum -** NAVD 88 - (North American Vertical Datum of 1988)

## Surveyed Location & Height - US Feet (Adjusted)

NAVD88 Elev: 4,644.37

NAVD29 Elev: 4,641.71

Northing 83 Feet: ----

Easting 83 Feet: ----

## GIS Map Position -

(GIS position values for X, Y and Lat, Long are derived from desktop mapping product; they do not guarantee accuracy and should not be used for engineering purposes.)

GIS X Coordinate: 3,229,020.85

GIS Y Coordinate: 1,384,029.66

Latitude: 40d23'04.74"N

Longitude: 104d40'40.32"W

## Dates -

**Date of Install:**

**Date of Survey:** 00/24/1995

**Date of Recovery:** 00/24/1995

## Types -

**Monument Type:** Aluminum 2 1/2" Disk

**Benchmark Type:** Quarter Section Corner

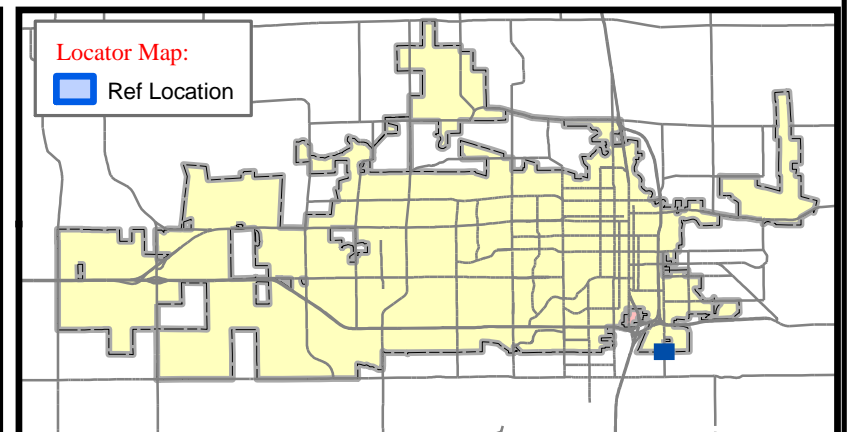
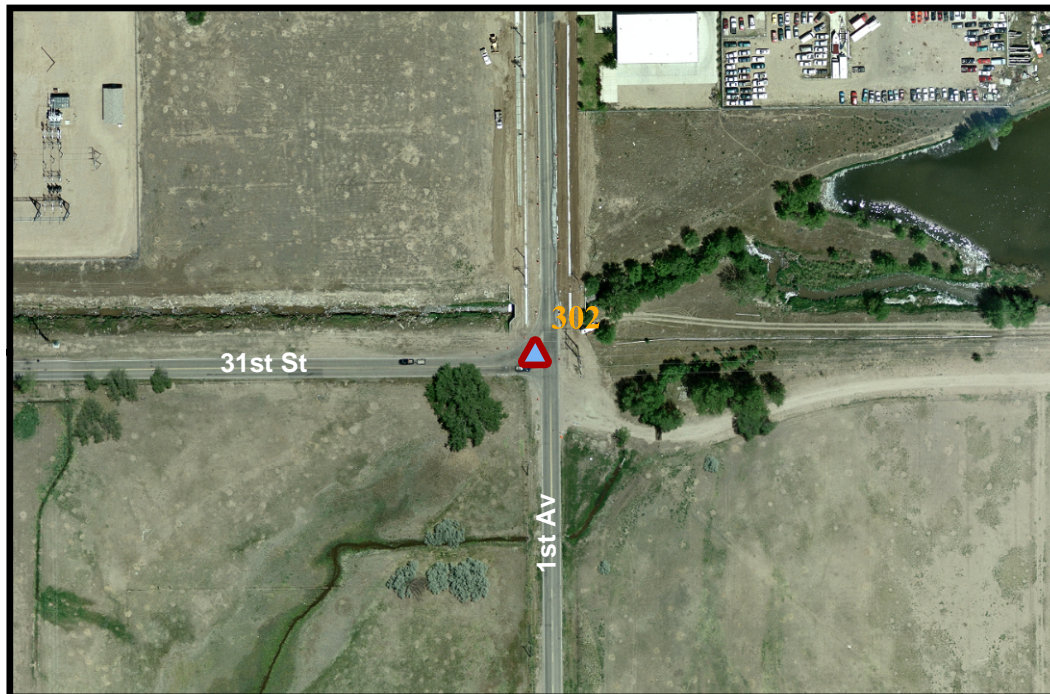
## NGVD 29 to NAVD 88 Conversion -

**Scale Factor:** 0.999959569

**Combined Factor:** 0.999737473

**Convergence:** 0 31' 52.34517"

Scale: 1 inch equals 300 feet



- |                                 |                        |
|---------------------------------|------------------------|
| CITY BENCHMARK                  | US GEOLOGICAL SURVEY   |
| COLORADO DEPT OF TRANSPORTATION | QUARTER QUARTER        |
| HARN POINT                      | QUARTER SECTION CORNER |
| NATIONAL GEODETIC SURVEY        | SECTION CORNER         |

**Contact:** ----- The City of Greeley GIS Program, 1010 6th St, Greeley, CO 80631, (970) 350-9787

## Description:

**Publication Date:** 1/24/2007 12:00:00 AM