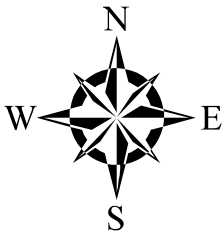


The City of Greeley Control Network



GIS Reference No: 400
Cap ID: GIS (Unstamped)
Pin ID:
State/County: CO/Weld

Horizontal Datum - NAD83/92 - HARN (High Accuracy Reference Network) Based
(SPCS) State Plane Coordinate System Colorado North Zone 0501 US Survey Feet
Ellipsoid GRS 80 - (Geodetic Referenc System of 1980)
Vertical Datum - NAVD 88 - (North American Vertical Datum of 1988)

Surveyed Location & Height - US Feet (Adjusted)

NAVD88 Elev: 4,657.97

NAVD29 Elev:

Northing 83 Feet:

Easting 83 Feet:

GIS Map Position -

(GIS position values for X, Y and Lat, Long are derived from desktop mapping product; they do not guarantee accuracy and should not be used for engineering purposes.)

GIS X Coordinate:

GIS Y Coordinate:

Latitude:

Longitude:

Dates -

Date of Install:

Date of Survey:

Date of Recovery:

Types -

Monument Type: Aluminum 3 1/4" Disk

Benchmark Type: City Benchmark

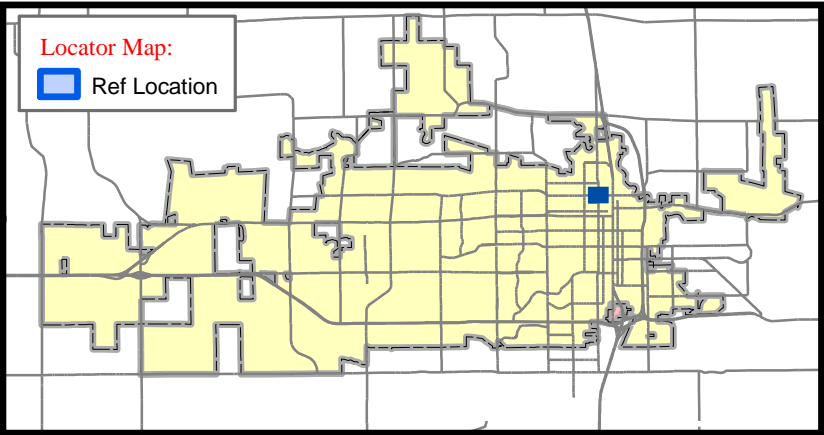
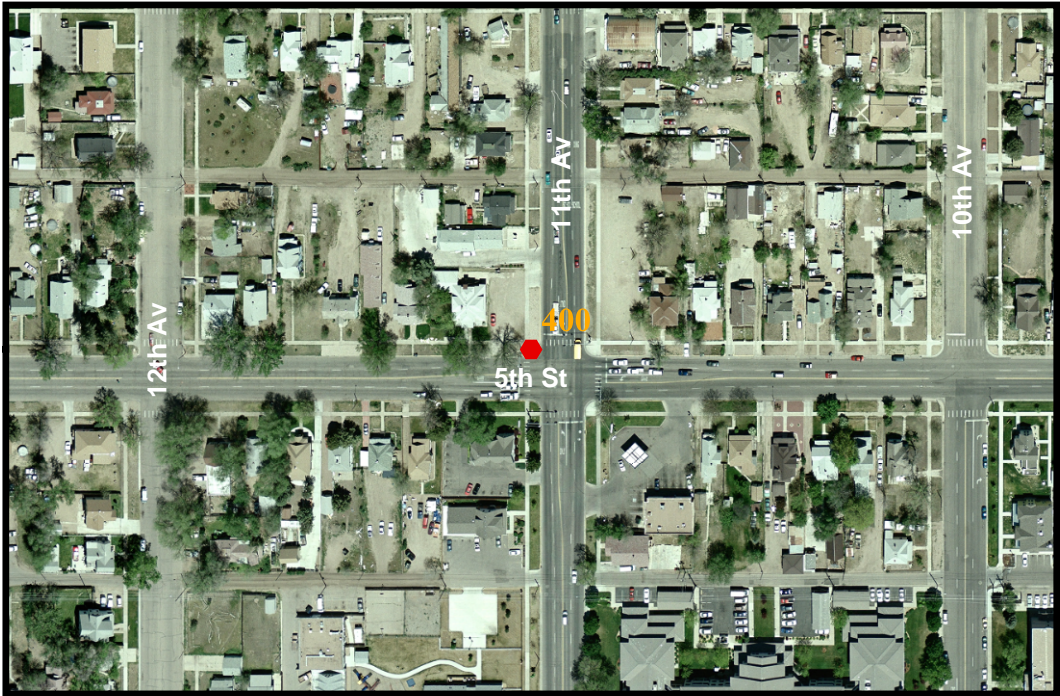
NGVD 29 to NAVD 88 Conversion -

Scale Factor:

Combined Factor:

Convergence:

Scale: 1 inch equals 300 feet



- | | |
|-----------------------------------|--------------------------|
| ● CITY BENCHMARK | ■ US GEOLOGICAL SURVEY |
| ● COLORADO DEPT OF TRANSPORTATION | △ QUARTER QUARTER |
| ■ HARN POINT | △ QUARTER SECTION CORNER |
| ■ NATIONAL GEODETIC SURVEY | △ SECTION CORNER |

Contact: ----- The City of Greeley GIS Program, 1010 6th St, Greeley, CO 80631, (970) 350-9787

Description: Located on pole base at the northwest side of intersection of 5th St and 11th Ave

Publication Date: 1/24/2007 12:00:00 AM