

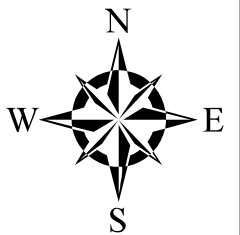
# The City of Greeley Control Network

GIS Reference No: 6

Pin ID: Unknown

Cap ID: 8

State/County: CO/Weld



**Horizontal Datum -** NAD83/92 - HARN (High Accuracy Reference Network) Based  
(SPCS) State Plane Coordinate System Colorado North Zone 0501 US Survey Feet  
Ellipsoid GRS 80 - (Geodetic Referenc System of 1980)

**Vertical Datum -** NAVD 88 - (North American Vertical Datum of 1988)

## Surveyed Location & Height - US Feet (Adjusted)

NAVD88 Elev: 4,686.04

NAVD29 Elev: 4,683.11

Northing 83 Feet: ----

Easting 83 Feet: ----

## GIS Map Position -

(GIS position values for X, Y and Lat, Long are derived from desktop mapping product; they do not guarantee accuracy and should not be used for engineering purposes.)

GIS X Coordinate: 3,220,539.88

GIS Y Coordinate: 1,397,750.44

Latitude: 40d25'21.08"N

Longitude: 104d42'28.34"W

## Dates -

Date of Install: 00/01/2002

Date of Survey: 00/23/2002

Date of Recovery: 00/23/2002

## Types -

Monument Type: Aluminum 3 1/4" Disk

Benchmark Type: City Benchmark

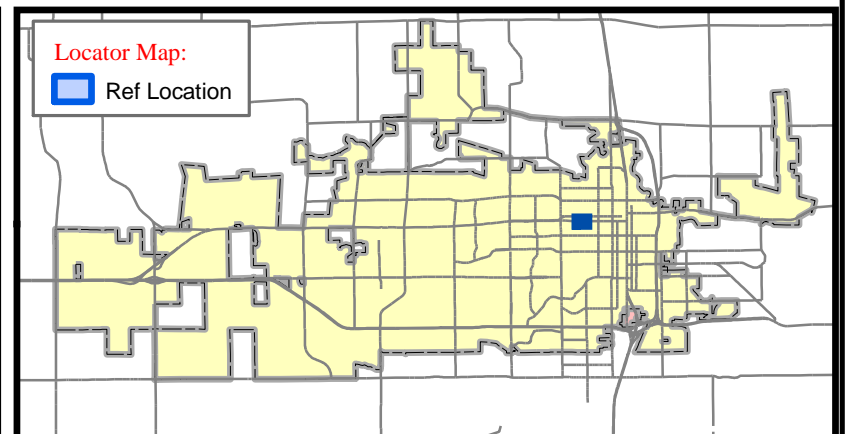
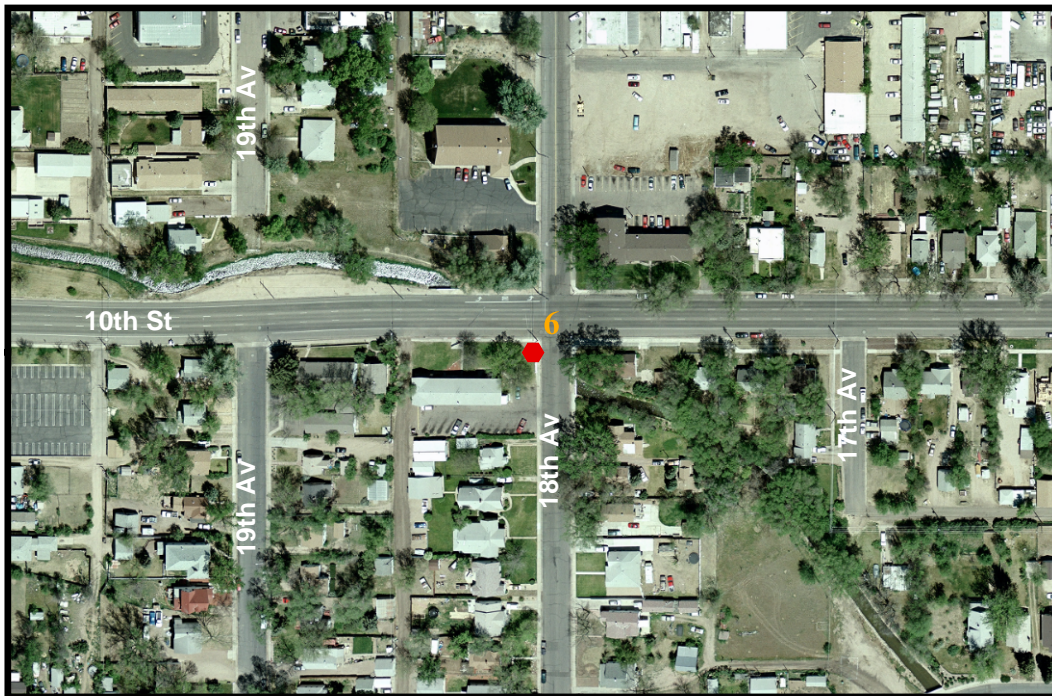
## NGVD 29 to NAVD 88 Conversion -

Scale Factor: 0.999961328

Combined Factor: 0.999737239

Convergence: 0 30' 42.55554"

Scale: 1 inch equals 300 feet



- |                                   |                          |
|-----------------------------------|--------------------------|
| ● CITY BENCHMARK                  | ■ US GEOLOGICAL SURVEY   |
| ● COLORADO DEPT OF TRANSPORTATION | △ QUARTER QUARTER        |
| ■ HARN POINT                      | △ QUARTER SECTION CORNER |
| ■ NATIONAL GEODETIC SURVEY        | △ SECTION CORNER         |

**Contact:** ----- The City of Greeley GIS Program, 1010 6th St, Greeley, CO 80631, (970) 350-9787

**Description:** Located at the south west corner of 10th St and 18th Ave. Behind the sidewalk and 15 ft south of utility pole.

**Publication Date:** 1/24/2007 12:00:00 AM