

RUSSIAN OLIVE TREE MITIGATION

Russian Olive has invaded natural areas across Colorado. This species has been designated a noxious weed by the Colorado Department of Agriculture because it drives out native plant species, in turn affecting native wildlife. These plants also impact agriculture by invading pasture land, blocking irrigation ditches, and consuming vast amounts of water. Experts predict that it could permanently displace the Plains Cottonwood if action isn't taken.

Russian Olive is considered a noxious weed and over the past several years the City of Greeley and Weld County have been working to eliminate it from areas including the Cache la Poudre River corridor and its tributary drainages. The Mountain Shadows and Country Club West Natural Areas are two of the remaining few sites in Greeley that still need attention.

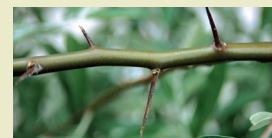
The City of Greeley recently received a grant from Great Outdoors Colorado (GOCO) to invest in a Russian Olive abatement program with help from the Weld County Youth Conservation Corps (WCYCC).

In the next few weeks, the WCYCC will cut down Russian Olive trees and apply a chemical to the remaining stumps to keep them from sprouting back. The tree limbs will be put through a chipper and the larger wood will be taken to the Greeley Organic Waste site.

This project has several benefits:

- Improved habitat for native plants and wildlife;
- Employment, training and education of young people;
- Reduced maintenance costs

In future years, the City expects to introduce a diversity of native vegetation to improve the quality of these natural areas.



Funds for this project were awarded by Great Outdoors Colorado (GOCO), which receives a portion of Colorado Lottery proceeds, to the Colorado Youth Corps Association for use by accredited youth corps. The goal of the program is to employ youth and young adults (ages 14-25) throughout the state on critical outdoor recreation and land conservation projects in partnership with local governments and open space agencies.

Please direct questions, comments or concerns to:
Natural Areas Coordinator Karen Scopel at
970-339-2417 or karen.scopel@greeleygov.com.

