



AVEN'S VILLAGE @ ISLAND GROVE INCLUSIVE PLAYGROUND

~ City of Greeley, Colorado ~
SPONSORSHIP PACKET
May 2014



To Whom it May Concern,

As summer time comes closer, the excitement of being outdoors looms. The anticipation of swimming pools, ice cream and playing at the park is filling the air.

During summer months, the first question on Aven's big brothers mind, "can we go to the park?"

"Sure, what park do you want to go to?" I often will reply.

"What park can my sister play at? I want her to have fun too."

My eyes would tear up, as I have to answer such a genuine question with a hard answer for my now 7-year-old son. We don't have a park in our community that is accessible for our daughter, so more often than not, the family dynamic that we practice of full inclusion does not transfer over to time at the park. Isis will run and play like any typically developed boy, and his sister will sit in the shade of a tree, watching as so many other children run, laugh, and play outdoors.

An accessible park in our community would mean that Aven and so many other children would be able to play with their family and friends with no limitations. Wheelchair access to slides, and swings. The thrill seeker in Aven has always enjoyed swinging, the feeling of sliding, spinning, and even wiggling. The equipment that Aven's Village is providing not only allows for her to do those things with her brother at her side, but allows for her to live her life, as all children should, not from the sideline, but from the front lines.

Aven was born extremely premature, at 25 weeks, and was diagnosed with Cerebral Palsy at 2 months old. She has used a wheel chair all her life up until 3 weeks ago. With the help of a very large walker to support her whole body she took her first steps. The first steps in a long journey beginning with fighting for her life, and taking us to a place where she can be the face of inclusion in the community that she calls home. Our family is honored to have our daughter be at the forefront of the building of our community's first accessible playground. We are thankful for the dream and the heart of Pastor Arron Chambers as well as the City of Greeley helping see Aven for the person that she is, and not the struggles that she goes through. We are thankful for all that are helping us along the way as we develop a place for families of all abilities to spend time together in their community.

Always encouraged,
Ethan, Brandy, Isis and Aven



PROJECT BACKGROUND

Project Message

I believe you can tell a lot about a community by how it cares for its children, which is one of the reasons my family and I relocated to Greeley six years ago. The more we looked into whether or not Greeley would be a good place to raise our children, the more convinced we became that Greeley is a GREAT place to raise children!

Active lifestyles and superb amenities are hallmarks of this community. The list includes friendly people; great restaurants, stores, and entertainment; close proximity to the mountains and outdoor recreation; diverse cultural events; a sound economy and robust sales tax; a strong faith community; hundreds of activities sponsored by the City's Culture, Parks, and Recreation Department and other youth organizations; excellent schools; and last, but not least, over 40 beautiful parks within our wonderful city!

What more could we need?

When my wife and I asked our own children this question, a discussion ensued. Our children told us that Greeley needed another playground. . . . but not just another "ordinary" playground. There are many great play spaces in Greeley, but our children wanted to build a playground where kids of all abilities could play together. They wanted an inclusive and integrated playground for everyone!

Resolved to help our kids realize their vision for this playground, I contacted the City's Culture, Parks, and Recreation Department. I discovered the staff had wanted to create a universally accessible playground in Greeley and immediately started working with me to make my kids' vision a reality.

Please join me and the City of Greeley by helping build a playground where kids of all ages, backgrounds, and abilities play together---a playground that is truly for everyone. Let's show Greeley's children how much we care about them, by giving them a premier "play destination" to discover and love.

Blessings,

Arron, Rhonda, Ashton, Levi, Sylas and Payton Chambers



Project Partners

The enthusiasm of the Chamber's family was the spark needed for the City of Greeley to forge a partnership with Shane's Inspiration, a non-profit organization devoted to creating inclusive playgrounds and programs that unite children of all abilities. This public/private partnership launched a series of discussions in the summer of 2013. Individuals and organizations from Greeley's special needs community along with a diverse group of young Greeley residents attended multiple meetings to assess specific needs and to secure ideas for the theme and design of the playground.

The Mondy family attended one of the first meetings. Ethan and Brandy Mondy have a healthy son, Isis, and a daughter, Aven, who was born with special needs. Aven (pronounced like "avenue") was a premature baby and diagnosed with cerebral palsy when she was two months old. Aven's personality delights and captures the hearts of those who meet her and the Chambers family suggested that the new playground be named in her honor. As early advocates of the new playground, the Mondy family was delighted that the universally accessible playground would be named Aven's Village.

Project Location

Aven's Village will be located in Greeley's Island Grove Regional Park, which has been used for recreation and community events since 1870. It will expand and replace the well-used but dated equipment currently located here. Century-old cottonwoods and other trees, spacious lawns, exhibition buildings, a large arena and covered grandstands, and Centennial Village Museum have earned Island Grove Park a reputation as one of the most picturesque and versatile event complexes in the nation. As a venue for local, state, and national activities and events, Aven's Village will undoubtedly become another attraction for the park's visitors (600,000 annually). Historically, the park borders the Cache la Poudre River and was a camping and burial place for the Cheyenne and Arapaho prior to the 1870s. In the 1860s, stage coach drivers for Ben Holaday's Overland Stage stopped here to water their horses. Island Grove was one of two parks established in 1870 when the Union Colony of Colorado platted the town of Greeley. Aven's Village will exemplify the care and compassion Greeley citizens share in support of this community's youth.

Donations may be made payable to: SI FPO Aven's Village (Shane's Inspiration For Purposes of Aven's Village) and sent c/o Tom Welch ~ 501 N. 14th Avenue ~ Greeley, CO 80631.

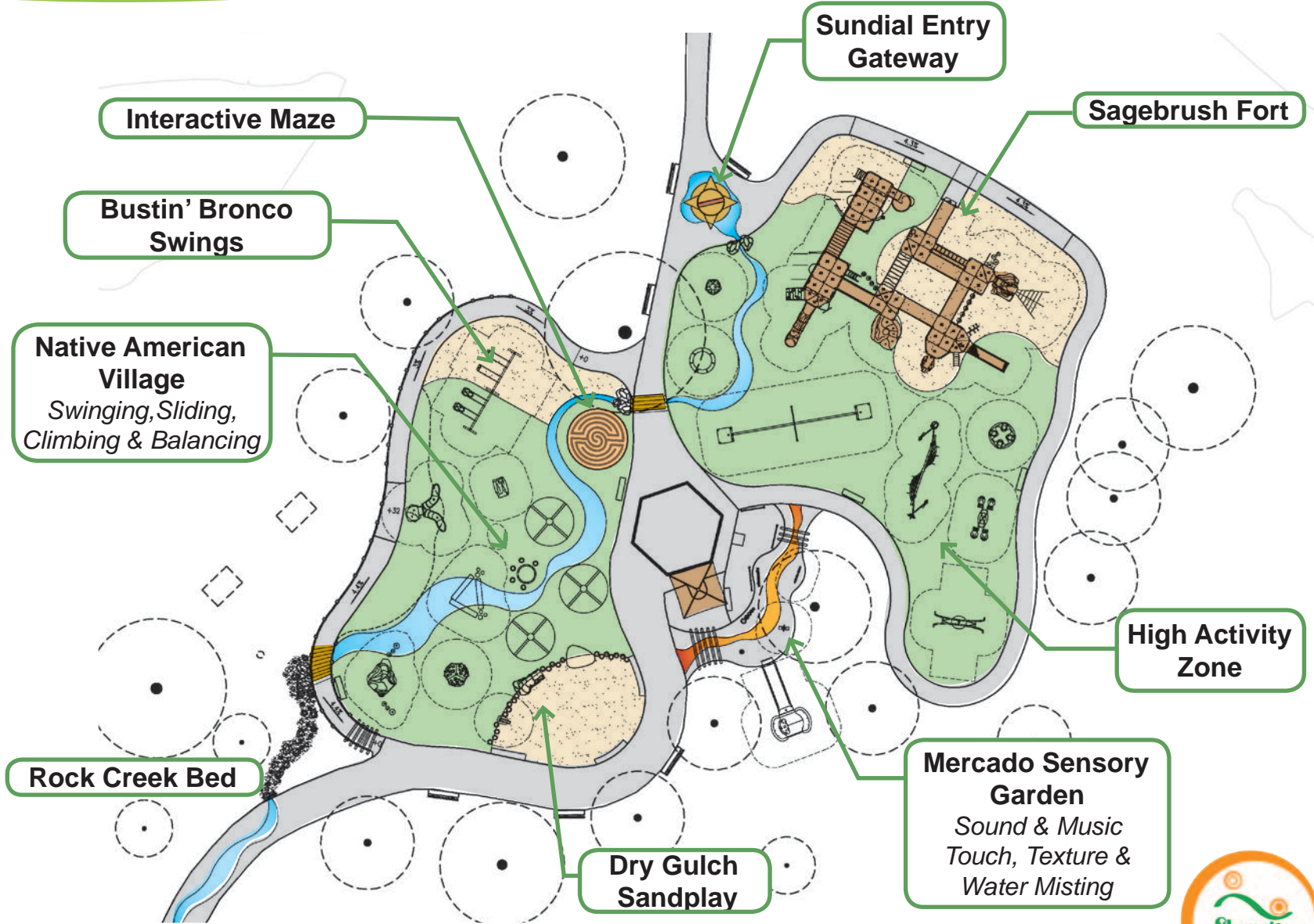
Support online via: www.shanesinspiration.org/donate. Then select Aven's Village @ Island Grove Park.

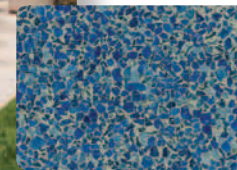
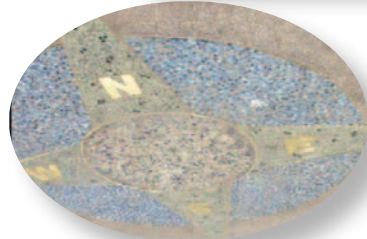
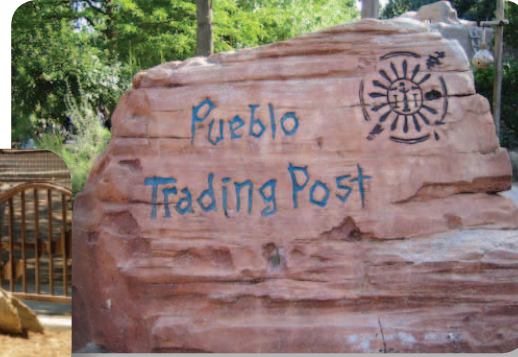
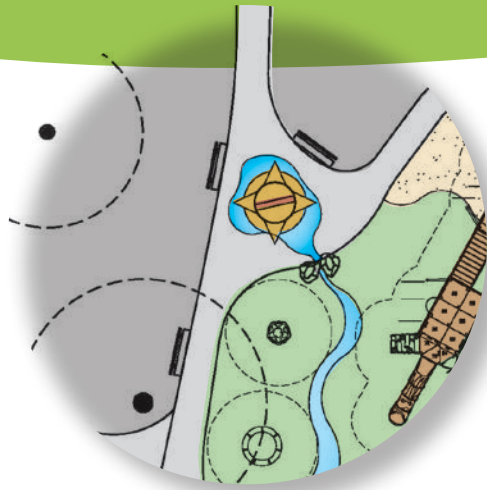
Catalog Contents

Playground Area Site Plan	5
Sundial Entry Gateway	6
5-12 Play Area	
Sagebrush Fort	7
High Activity Zone (Ages 5-12)	8
2-5 Play Area	
~ Native American Village	9
~ Bustin' Bronco Canopy Swings and Slides	10
~ Climbing & Balancing	11
Dry Gulch Sand Play Area	12
Interactive Maze	13
Mercado Sensory Garden	
~ Sound & Music	14
~ Touch & Texture	15
Site Amenities	16
Sponsorship Opportunities	17
~ Donor Recognition Program	
Letters of Support	18-24



PLAYGROUND AREAS

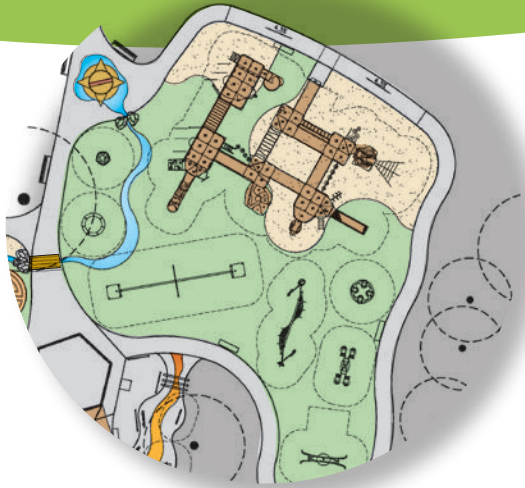




Sundial Entry Gateway

The Sundial Entry Gateway will set the historic theme for the project. Positioned opposite the entry to our school age **Sagebrush Fort**, it will also introduce visitors to the pre-school age **Native American Village** with wood textured concrete posts and an overhead arrow sign introducing you to **Aven's Village at Island Grove Park**. Nestled under the entry sign children can explore the magical sundial image constructed of textured lithocrete. Children in wheelchairs will enjoy encircling the space as they feel the different textures lithocrete material offers. Follow the symbolic South Platte River as it enters the resilient surfacing in the 5-12 play area, crosses under the simulated bridge of concrete wood plank paving, enters the Indian Trading Village, before gently exiting into the dry stream rock bed. The simulated river surfaces again connecting **Aven's Village** to the near by Splash Pad to the south.

Donation: \$25,000 (allowance)

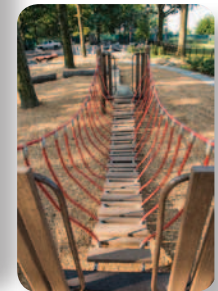


Sagebrush Fort (Ages 5-12)

Welcome to the **5-12 School-Age Sagebrush Fort**, modelled after two Colorado historical military structures, Bent Fort and Fort Vasquez. Fortress plank paneling will depict the exterior facade, and store front panels will set the interior look where buyers can make daily purchases at the general store and set up trading posts for bartering of manufactured goods. The structure will be fully accessible via ramps. Even the highest slides will be accessible via wheelchair transfer stations. In particular, the Rollerslide for sensory body awareness. Climbing elements are offered for the able-bodied and those with disabilities, working on gross motor development. Interactive pivoting cannons atop tall lookout towers will offer protection from intruders and close-up viewing of the Village. Fully accessible custom sensory interactive panels will support fine motor skill development and face-to-face play.

Resilient surfacing will contain thematic graphics and colors that support a rustic fortress appearance.

Total Donation: \$435,000 (includes surfacing)



High Activity Zone (Ages 5-12)



Evos Blender Spinner



Rollerslide



Oodle Swing



Hemisphere Climber



Wee-Saw



ZipKrooz



Flywheel Spinner



Omni Spinner



Boggie Board



Supernova



Total Donation: \$75,000 (equipment only)



Native American Village (Ages 2-5)

Welcome to our **2-5 Pre-School Age Native American Village** where American Teepees establish the trading post theme play about to begin! Enjoy moments of fun as the outpost settlers visit your tent to trade blankets, beads, kettles, knives, guns, ammunition, and other manufactured goods for your beautiful buffalo robes. If you're into bartering move to the trading table and rest on the log seats before you begin to trade. Children will enjoy the various climbers like the peak rock climber with mushroom steppers, and the agricultural climber with talk tube interactive play. Log beams and steppers develop a child's vestibular balance as they cross the Cache Le Poudre River. Tunnels offer crawling opportunities for traversing the terrain.

Children will enjoy accessing the play equipment on rubberized surfacing observing the river graphic as it flows through their Village.

Total Donation: \$300,000 (includes surfacing)



Trading Post with Teepees



Drum table with Log Seats



Agricultural Climber with talking Tube



Climbing & Balancing Opportunities (Ages 2-5)



Balancing Beams & Logs



Custom Cozy Dome Hut



Horse & Foal Climber



Cannon Ball Climber



Peak Rock Climber with
Mushroom Steppers

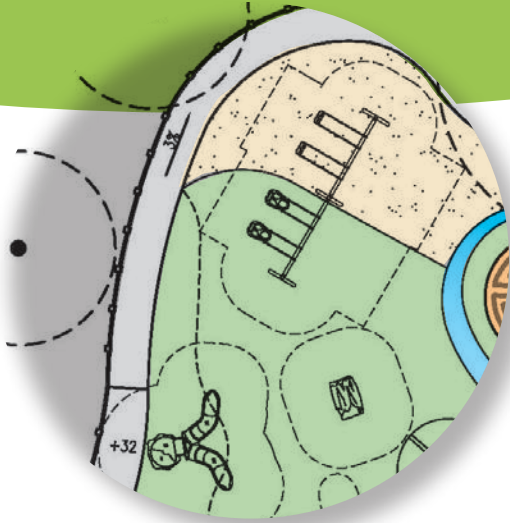


Log Tunnel



Leaf Steppers





INative American Theme Swings



Bustin' Bronco Canopy Swings and Slides (Ages 2-12)

The Pre-school Age **Swing and Slide Area** will contain two belt seats and two molded high back seats with colorful rubberized surfacing beneath the swings to cushion any unexpected falls. Children of all abilities will find the back and forth horizontal movement soothing as they swing side by side their peers and reach for the sky!

For those who want some exertion, travel up the wheelchair accessible elevated walk to the 48" platform where a child can transfer out of their chair and down one of the two Gemini Slides. The slides are embedded in a resilient surfacing slope offering children the opportunity to spend hours rolling down the slope or sliding down the shoot. Watch how your child with a disability races their able bodied friend down the slide.

Total Donation: \$35,000 (includes surfacing)

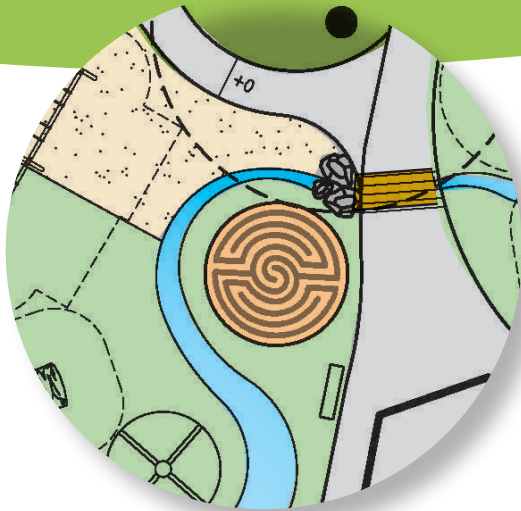


Slides with transfer station on slope



Sloped Surfacing w/ Tunnels





Interactive Maze (All Ages)

The **Interactive Maze** can take many different forms and be constructed of various materials: stone, concrete, rocks or even mosaic tile with different graphic images if you want the challenge to be more of a puzzle. The maze will provide various opportunities for travel. The easy route may take you directly into the center, but if you travel the perimeter of the maze you may find yourself maneuvering to a different place, with new discoveries. This is a wonderful opportunity for children with Autism as it forces them to focus on one directed activity. Different surprises may be found along the way, but one thing is for sure, as you wind your way through the trail in search of the center you can make it as challenging and fun as time allows whether you are alone or with friends!

Donation: \$7,500 (allowance)

Multiple Direction Maze

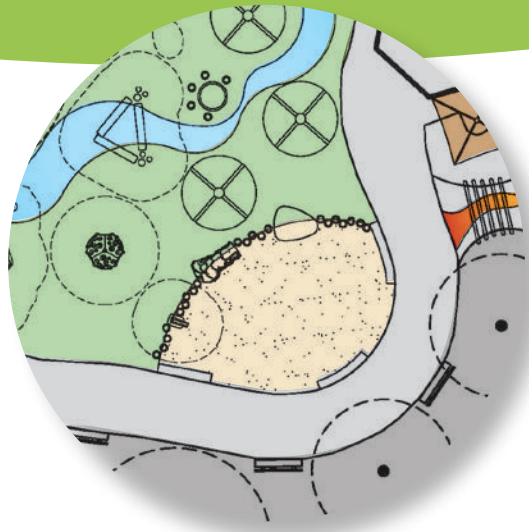


Mosaic Tile Hopscotch Maze



One Direction Maze





Dry Gulch Sand Play Area (All Ages)

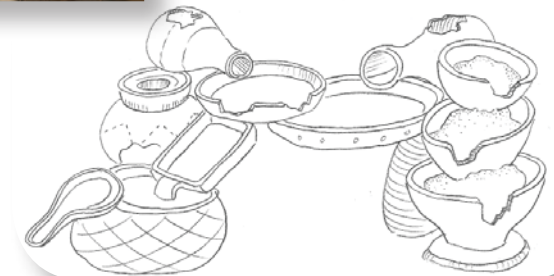
The **Dry Gulch Sand Play Area** provides space for discovery and group interaction. Boulders, log benches and steppers border the edge, providing character and historical reference. Thematic concrete imprints will pattern concrete benches.

An accessible sand table, constructed of glass fiber reinforced concrete, will take the form of various pottery bowls offering different table heights for multi-age play. An historic replica cannon and buffalo climber will provide opportunities for climbing and textural exploration. All these elements will rest half on resilient surfacing, half on sand. Fossil elements will lie below the sand surface, and pictorial clues will be shown on free-standing panels. What are they looking for and where will the items be found?

Donation: \$125,000 (includes sand)



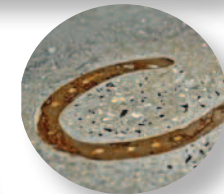
Cannon



Accessible Sand Table
with Pottery Theme

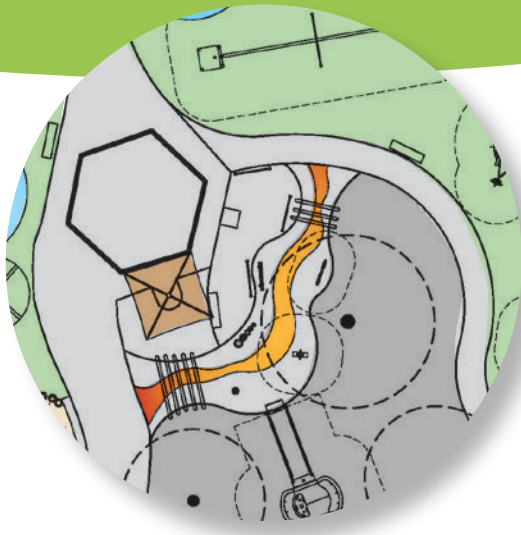


Buffalo Climber



Thematic Concrete Imprints





Sensory Garden: (All Ages) Sound & Music

Located off of the main walking path, musical instruments can be found at ground level with easy access for children of all ages. The **Sound Garden** instruments (chimes, pagoda bell, rainwheel and drums) will provide an additional element of play for children with disabilities, and can be especially enjoyed by children who are visually impaired, since they see bright colors as shadows and can differentiate one from another. Music is also a wonderful opportunity for cooperative play or can simply serve as an independent focused activity for children with autism or ADHD who may need to find that private space.

Families of children of all abilities can relax in the Sway Fun and they listen to the beautiful music their children create.

Donation: \$50,000 (includes concrete)



Box Drum



Pagoda Bell



Rainwheel



Interactive Panels

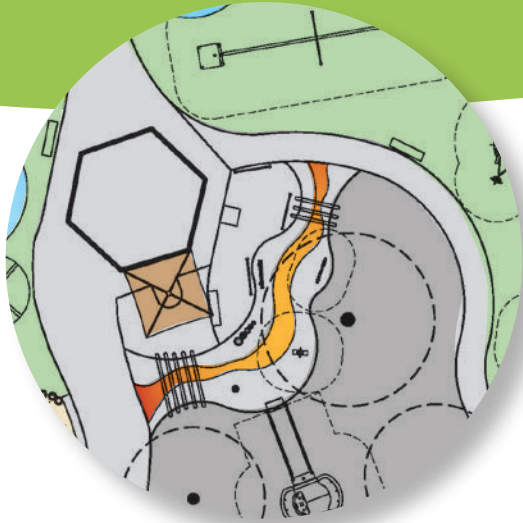


Swirl Chimes



Sway Fun





Slate Drawing Surface

Mercado Sensory Garden: Touch & Texture (All Ages)

Located across from the Sound Garden is the **Mercado Sensory Garden** dedicated to **Touch and Texture**. Slate media panels offer drawing and painting opportunities. A mister with a shade cool topper keeps children cool on hot summer days, but the mist can also act as a drawing material on slate.

Bisecting the two sensory gardens children will find a brightly colored mosaic river pattern, embracing the local Hispanic culture. The river provides tactile textural opportunities and a sense of vibration as mobile devices move across the mosaic pattern. This area will be enjoyed by children of all abilities, especially by those visually impaired.

Other play elements within the sensory garden supporting **Touch and Texture** may include an abacus or textured floating rocks on posts.

Donation: \$25,000
(includes concrete surface and mosaics)



Mosaic Tile Paving Options



Floating Rocks



Stone Abacus



Cooltopper Mister





Metal Bench with Donor Plaque



Metal Trash Receptacle



Donor Plaque on Rock Boulder



Site Amenities

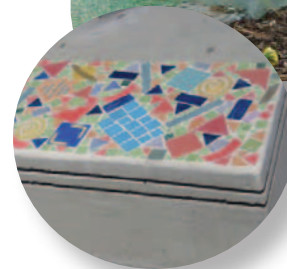
Site Amenities, ADA accessible, will be provided throughout the site.

Poured in place brightly colored tiled benches with thematic elements or traditional metal park benches will rest within the play areas. Donor opportunities will be provided at the entry point and along the main pedestrian path, with brass plaques that can be attached to the bench back. Engraved plaques on boulders is another way of offering donor recognition.

Other amenities include decorative acorn seating and tree branch fencing, a drinking fountain and trash receptacles.



Deco Tile Bench



Decorative Fencing



Acorn Seat



Donation: \$35,000

SPONSORSHIP OPPORTUNITIES



Sundial Entry Gateway ~ Signage/Surfacing (Lithocrete)	\$ 25,000
Sagebrush Fort ~ Equipment ~ Surfacing (Resilient Surfacing/Sand)	\$ 435,000
Wagon Wheel High Activity Area ~ Equipment/Surfacing (Resilient Surfacing)	\$ 75,000
Native American Village ~ Equipment ~ Surfacing (Resilient Surfacing/Sand)	\$ 300,000
Bustin' Bronco Canopy Swings & Slides ~ Equipment ~ Surfacing (Resilient Surfacing/Sand)	\$ 35,000
Interactive Maze	\$ 7,500
Dry Gulch Sand Area ~ Equipment/Surfacing (Sand)	\$ 125,000
Sensory Garden ~ Sound & Music/Surfacing (Concrete)	\$ 50,000
Mercado Sensory Garden ~ Touch & Texture/ ~ Surfacing (Concrete/Mosaic Tile)	\$ 25,000
Site Amenities	\$ 35,000
Hardscape Circulation/Demo/Mobilization Main Center Path Perimeter Path adjacent to play areas Concrete Ramps/Elevated Walks/Mow Strip	\$ 30,000
Mobilization & Demo Costs	

DONOR RECOGNITION PROGRAM

Project Naming Rights: * \$250,000 or more

- * Donor recognition will be incorporated as "Aven's Village at Island Grove Park made possible by....."
- * Featured on main project entryway signage.
- * Full page recognition in one release of Recreation Connection with a distribution of 13,500.
- * Inclusion in promotional materials and press publication (list to be provided).

Sponsor one or multiple playground areas: \$25,000 or more

- * Donor recognition will be incorporated into the corresponding playground area as "Dry Gulch Sand Area made possible by....."
- * Inclusion in promotional materials and press publication (list to be provided).

Project donation: \$5,000-\$25,000

- * Donor recognition to appear with others on project monument as "This project made possible through the generous support of our community"



To Whom It May Concern

My name is Sylvia Ybarra and I have a daughter that was born severely premature, weighing in at 1 lb. 7.5 ounces on May 22, 1999 – Serena Jade Ybarra. She was hospitalized for 6 months before she got to come home. She is now 13 years old and attends regular school - (Franklin). She is in the RLC group. The teacher/aids have taken her class to the Inspiration Park in Fort Collins. Serena did enjoy the outing, but she was confined to her wheelchair. Serena only uses her wheelchair to go to school and cannot maneuver the wheelchair herself. She solely relies on others for assistance.

Serena has a Gate Trainer at home that she utilizes 60% of the time. She loves it and is very mobile in this trainer. It is a piece of equipment that allows her to freely walk while being fully supported without help from us. When she is not in her walker, she is usually on the floor rolling or scooting around. She does not sit up independently. She has Cerebral Palsy among other medical setbacks. (These are all due to her prematurity). But, to us- she is perfect!

My husband, Ralph and I currently do not take our daughter to public parks because she cannot enjoy them. She is 60+ pounds and it is hard for us to carry her onto the slide, swings, etc. without getting backaches and possibly hurting ourselves. In addition, most of the playgrounds are surrounded by grass and it makes it hard to maneuver a wheelchair to the playground.

Serena does love being around other children and it just breaks my heart that she can't run and jump on the jungle gyms, use the swings, climb the monkey bars etc... We are able to take her on walks and let her roam freely on tennis courts when they are not in use. Unfortunately there usually aren't other kids around we do so.

It is my hope that the playground at Island Grove Park can become a reality so that we can play with our daughter in our community.

Sincerely,

Sylvia Ybarra

Sylvia Ybarra



To Whom It May Concern,

My name is Sydnee Holmes, I attend University High School as a sophomore. As a school project, I wanted to build a park for disabled children living in and around Greeley, Colorado. Children with disabilities include those in wheel chairs and walkers, blind, deaf, autistic, have learning disabilities, intellectual disabilities, mental illnesses, and or any physical disabilities. I approached the City of Greeley wanting to be part of a park reconstruction and I was taken in and put on the team for Aven's Village. This was one of the best things to happen to me. I am proud to be writing this Letter of Support and ready to get this thing going!

When I first thought of this project, I researched different types of playground and learned the lingo. Typical Playgrounds used at elementary schools segregate and are not only inaccessible for children with disabilities, but they are very similar to many other local schools, without much imagination. They are plastic and they are predictable. They do not inspire imagination and they do not encourage group play. Adaptive playgrounds segregate as well. Playgrounds with ramps ONLY force children who use wheels to follow a specific path. This is not very appealing for children with disabilities or their parents. The problem isn't about access to a structure, it's about allowing and encouraging children of all abilities to play together.

Currently we have one accessible park in Greeley. This park is of the adaptive playground type. It has the ramps and chosen paths. Aven's Village will be an INCLUSIVE playground. Everyone can go everywhere. No one should have their path chosen for them. Children in wheel chairs, the blind, the deaf, and the children with learning disabilities will be able to experience all aspects of the park. At Aven's Village, there will be areas for everyone. Whether you are deaf, blind, can't walk, or have troubles understanding, the area will be for everyone.

This park has become my major goal for high school projects, our impact on the world, and our impact in peoples' hearts. All I really care about is the acceptance for those less fortunate. I want them to know that someone out there is thinking of them too. I feel like this is the best way for me to learn and give back to our community. This will matter to a lot more than just me or the city. This park will be more than just a park. It will be a learning area, a place where everyone is included, a place for relaxation, and a place where children can honestly expand their imagination past the tablets, computers, and their parents' phones. Aven's park is fun for all: parents, children with and children without disabilities.

Respectfully,
Sydnee Holmes





DEPARTMENT OF PUBLIC HEALTH AND ENVIRONMENT
 1555 North 17th Avenue
 Greeley, CO 80631



Public Health
 Prevent. Promote. Protect.

Web: www.weldhealth.org

Health Administration Vital Records Tele: 970.304.6410 Fax: 970.304.6412	Public Health & Clinical Services Tele: 970.304.6420 Fax: 970.304.6416	Environmental Health Services Tele: 970.304.6415 Fax: 970.304.6411	Communication, Education & Planning Tele: 970.304.6470 Fax: 970.304.6452	Emergency Preparedness & Response Tele: 970.304.6420 Fax: 970.304.6469
---	---	---	---	---

Our vision: Together with the communities we serve, we are working to make Weld County the healthiest place to live, learn, work and play.

To Whom It May Concern,

I am writing this letter of support for the proposed universally accessible playground in Island Grove Park located in the City of Greeley, Weld County.

The Health Care Program for Children with Special Needs (HCP) is a community resource for families and health care providers in Weld County, serving children from birth to age 21 that have, or are at risk for, serious physical, behavioral, or emotional conditions. HCP promotes the Medical Home Approach and provides information, referrals, support, and care coordination services to children with special health care needs and their families. HCP has 16 regional offices throughout Colorado and works in a partnership with families, community agencies and health care providers. The Weld HCP team includes: registered nurse care coordinators, a social worker, and an office technician.

Following consultation with State HCP staff and according to the 2009-2010 National Survey of Children with Special Health Care Needs Ages 0-17 it is estimated that there are 9825 children with special health care needs (age 0-17) living in Weld County. The Colorado Department of Public Health and Environment (CDPHE) Epidemiology, Planning, and Evaluation (EPE) unit used 2012 population data for each county and multiplied that by the national estimate of 13.7% to arrive at specific figures by county.

As the program supervisor for the Weld County Health Care Program for Children with Special Needs I support a universal playground which will provide an invaluable opportunity for integration, growth, learning, and development for children and youth with special health care needs living in Weld County. Please contact me if you have any questions.

Respectfully,

Amy Antuna RN, BSN
 Program Supervisor
 Health Care Program for Children with Special Needs (HCP)
 Weld County Department of Public Health and Environment
 1555 N. 17th Avenue
 Greeley, CO 80631
 970-304-6420 x2322
 aantuna@co.weld.co.us





DEPARTMENT OF PUBLIC HEALTH AND ENVIRONMENT
 1555 North 17th Avenue
 Greeley, CO 80631



Public Health
 Prevent. Promote. Protect.

Web: www.weldhealth.org

Health Administration Vital Records	Public Health & Clinical Services	Environmental Health Services	Communication, Education & Planning	Emergency Preparedness & Response
Tele: 970.304.6410 Fax: 970.304.6412	Tele: 970.304.6420 Fax: 970.304.6416	Tele: 970.304.6415 Fax: 970.304.6411	Tele: 970.304.6470 Fax: 970.304.6452	Tele: 970.304.6420 Fax: 970.304.6469

Our vision: Together with the communities we serve, we are working to make Weld County the healthiest place to live, learn, work and play.

To Whom It May Concern,

On behalf of the Healthy Weld 2020 Program please accept this letter in support of the Island Grove Universal Access Playground project. Healthy Weld 2020 is a grant-funded program that takes the leading role of obesity prevention initiatives throughout Weld County by creating and supporting healthy environments where residents live, works, learn, and play. Under served populations are a particular focus of what we do, and this project aligns itself perfectly with our objectives.

A built environment where children, as well as adults, are able to increase physical activity opportunities throughout the day promotes healthy lifestyles overall. The Colorado childhood obesity rate is rising rapidly as reported in Colorado Health Foundation’s 2011 Colorado Health Report Card1. As reported by Ed News Colorado:

“Five years ago (2003), 9.9 percent of Colorado children were obese. In the last national survey [2009], that figure had risen to 14.2 percent. In 2007, Colorado had the third lowest child obesity rate in the U.S. In the most recent survey, the state ranks 23rd.”2

This universal playground will support healthy lifestyles by improving accessibility, and providing additional recreation and learning opportunities for residents of all abilities in the community. Healthy Weld 2020 encourages you to support the City of Greeley’s funding request.

Sincerely,

Pam Smith Wolsey
 Active Community Environment Technical Advisor,
 Healthy Weld 2020 Program
 Weld County Department of Public Health & Environment
 aantuna@co.weld.co.us





To Whom It May Concern:

The City of Greeley is commonly referred to as the city of parks. There are a large number of residents who are currently underserved by the existing park equipment and structures. This letter of support is written collaboratively by the UNC Student Council of Exceptional Children (SCEC) and the College of Education and Behavioral Sciences for the efforts by the City of Greeley to apply for financial support for ta universal inclusive park and playground structure. With the inclusive nature of universally designed play structures all community members will benefit from and enjoy outdoor recreational opportunities. The University of Northern Colorado College of Education and Behavioral Sciences serves community members of all ages from early childhood to the aged. The college supports student activities, classes, and service learning activities within the community, which influence the community health and quality of life. This recreational area will be integrated into curriculums across the campus.

It is no secret that the mental, physical, and social health of residents is promoted by social ad environmental determinants. There are over 7,000 grandchildren in Weld County who are being raised by their grandparents, of which the majority live in Greeley, which is the largest city within the county. It is essential that these two groups have access to recreational opportunities that allow them physical and social quality activities that are age appropriate in promoting family and social relationships, and are universally accessible for them together.

The INV SCEC actively collaborates with the City of Greeley, providing therapeutically supportive programs targeted at above mentioned families and those of children/ youth with or at risk for disabilities (physically and mentally). The participants in their programs provide wonderful practice for the future aspirations of the UNC students in training. They see first-hand the impact they have on the impact they have on the community and understand the needs for inclusive and universal design of recreational activities and families and friends can do together. The benefits of therapeutic play for ch8ildren/ youth are enormous and if parents could also have the access to join in such play times, the benefits would be two-fold. A play and park structure that is designed to go beyond the minimum ADA requirements could truly provide and environment that encourages active recreation for all ages and abilities. It would also enable social interactions between children/ youth with and without physical disabilities that does not naturally occur on the existing playgrounds.

Including everyone in an environment that encourages fun as well as physical and social cooperation and multigenerational play adds to our community's health. We wholly support the addition of such a park and play area in the existing structure of our city of parks. The student members of the UNC Student Council of Exceptional Children Chapter #381 will be available when the time developmental appropriate area, the equipment, and the opportunity to be part of allowing everyone successful recreation.

Sincerely,

A handwritten signature in cursive script that reads 'Francie R. Murry'.

Francie R. Murry, Ph. D.
Faculty Sponsor,
UNC Student Council for Exceptional Children

A handwritten signature in cursive script that reads 'Eugene P. Sheehan'.

Eugene Sheehan, Ph. D.
Dean, College of Education and Behavioral Sciences





Andrew McRoberts
Director of Culture, Parks and Recreation Dept.
651 10th Avenue, Greeley, CO 80631

5312 W. 9th Street Drive, Ste. 150
GREELEY, CO 80634
(970) 353-5219
arc@arcweldcounty.org

To Whom It May Concern:

My name is Lawrence W. McDermott and I am the Director for the Arc of Weld County, which is an agency that advocates for children and adults with Developmental Disabilities and their families. This letter is in support of the "Island Gove Universal Access Play -ground". Two of our families that we serve have submitted the following:

"I am a Greeley resident and I take care of my Grandson Isaac Holes who has been diagnosed with autism and has many high sensory needs. If there were a playground available that met his needs, I would bring him often".

Marilyn Valdez

"We have 7 year old twin sons who have autism and have very high behavioral and sensory needs. We try to take our boys to the park now however since some of the equipment is not designed for children with special needs, the playground equipment can actually pose a danger to our boys. It would be awesome to have a sage park that is based on special needs and safety. We would use it often for our boys".

Richard & Wendy Keith

In closing the Arc of Weld County and the families in the aforementioned would fully support any and all efforts to implement and accessible playground for children with special needs in Greeley, Colorado. We applaud current efforts to improve services for families that have children with special needs.

Respectfully,

A handwritten signature in black ink that reads 'Lawrence W. McDermott'.

Lawrence W. McDermott
Executive Director/ Arc of Weld County





Greeley-Evans
Weld County School District 6
1025 NINTH AVENUE | GREELEY, COLORADO 80631
970-348-6000 | WWW.GREELEYSCHOOLS.ORG



To Whom it May Concern,

It is with great enthusiasm and passion that I write this letter of support for the Island Grove Universal Access Playground Project. As the Special Education Director for the Greeley-Evans School District 6 (GESD 6), I have the privilege to support the work of committed families, amazing special education staff, and other specialized service providers for over 2,000 students with disabilities.

While all of our schools' playgrounds meet the legal requirements to accommodate the needs of all students, there is no doubt that this project will provide students in the community with a state-of-the-art system of equipment to foster an inclusive learning and play area for children of all abilities. Community involvement and integration is an important focus in all of our special needs programs. Having an inclusive playground in such close proximity to our schools offers many opportunities for our students, teachers, and support service providers to enhance the teaching and learning process. I look forward to approving countless field trip requests to this incredible addition to our community.

I fully support this project and encourage the representatives from the Parks and Recreation Department of the City of Greeley and project designers from Shane's Inspiration to invite students, teachers and paraprofessionals from GESD 6 to participate in creating and developing the play environment. To increase participation, access, and to minimize the potential barrier of transportation for students and families within the community, I would welcome the opportunity to host design planning meetings within schools and classrooms for students with disabilities and their families.

I look forward to working collaboratively with the City of Greeley and countless other community supporters to make the Island Grove Universal Access Playground a reality, and participating hand-in-hand with students and families in the future ribbon-cutting ceremony.

If you have any questions, please do not hesitate to contact me.

Tom Gribble
Director of Special Education
Greeley Evans Schools District 6
1025 Ninth Avenue
Greeley, CO 80631
970.348.6103





AVEN'S VILLAGE @ ISLAND GROVE INCLUSIVE PLAYGROUND

~ City of Greeley, Colorado ~

Donation checks may be made payable to: SI FPO Aven's Village
(Shane's Inspiration For Purposes of Aven's Village) and sent c/o Tom Welch

~ 501 N. 14th Avenue ~ Greeley, CO 80631~

Support online via: www.shanesinspiration.org/donate

