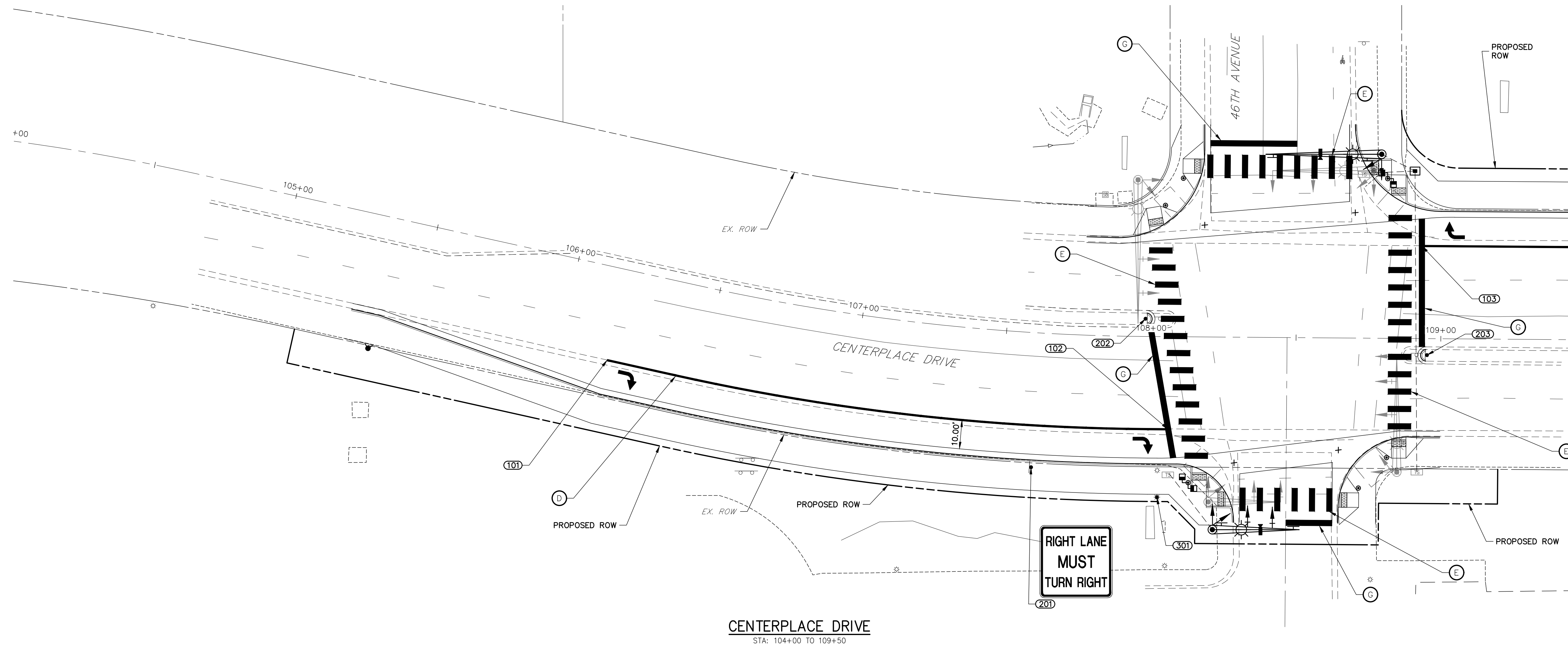
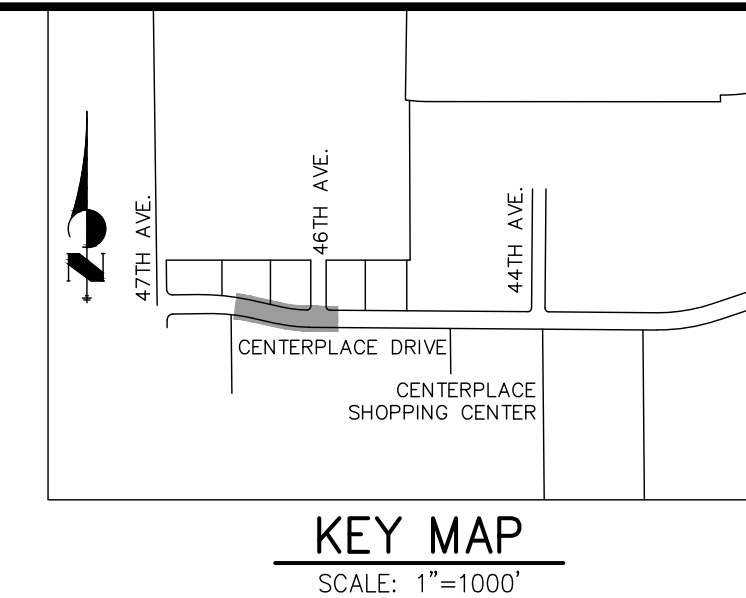


STRIPING TABULATION					
STRIPE NUMBER	STATION	OFFSET	ALIGNMENT	NOTES	DESCRIPTION
101	106+17.13	32.00' (RT)	CL - CENTERPLACE		BEGIN STRIPE
102	108+06.07	32.00' (RT)	CL - CENTERPLACE		END STRIPE
103	108+93.22	32.00' (LT)	CL - CENTERPLACE		BEGIN STRIPE

SIGN TABULATION					
SIGN NUMBER	STATION	OFFSET	ALIGNMENT	NOTES	DESCRIPTION
201	107+61.14	46.50' (RT)	CL - CENTERPLACE		R3-7R 30"x30"
202	107+97.95	6.14' (LT)	CL - CENTERPLACE		RESET KEEP RIGHT SIGN INSTALL 4" PVC SLEEVE
203	108+95.23	5.70' (RT)	CL - CENTERPLACE		RESET KEEP RIGHT SIGN INSTALL 4" PVC SLEEVE

STREET LIGHT TABULATION						
STREET LIGHT NUMBER	STATION	OFFSET	ALIGNMENT	ELEVATION	NOTES	DESCRIPTION
301	108+02.35	55.50' (RT)	CL - CENTERPLACE	4865.57		RESET STREET LIGHT



CENTERPLACE DRIVE
STA: 104+00 TO 109+50

LEGEND

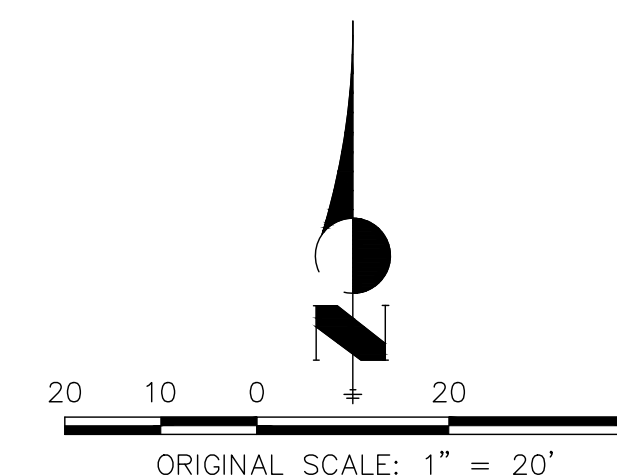
- | | | |
|-------------------------------------------------------------------------------------------------------------------------------------------------------------------------------------------------------------------------------------------------------------------------------------------------------------------------------------------------|---------------------------------------------------------------------------------------------------------------------------------------------------------------------------------------------------------------------------------------------------------------------------------------------------------------------------------------------------------------------------|-------------------------------------------------------------------------------------------------------------------------------------------------------------------------------------------------------------------------------------------------------------------------------------------------------------------------------------------------------|
| <ul style="list-style-type: none"> ▲ PROPOSED SIGN ○ EXISTING SIGN ◇ CDOT DELINEATOR TYPE I (CRYSTAL) ⊗ CDOT DELINEATOR TYPE II (CRYSTAL) ⊕ CDOT DELINEATOR TYPE II (YELLOW) ⊖ CDOT DELINEATOR TYPE II (YELLOW) BACK TO BACK XX PROPOSED STRIPE ⊗ EXISTING STRIPE | <ul style="list-style-type: none"> A LANE LINE - 4" WIDE X 10' LONG, 30' GAP, WHITE THERMOPLASTIC B CENTER LINE - 4" WIDE, SOLID DOUBLE YELLOW, THERMOPLASTIC C EDGE LINE - 4" WIDE, SOLID WHITE, THERMOPLASTIC D CHANNELIZING LINE - 8" WIDE, SOLID WHITE THERMOPLASTIC E CROSSWALK - 2'X8' SOLID WHITE THERMOPLASTIC | <ul style="list-style-type: none"> F LANE EXTENSION LINE - 4" WIDE X 2' LONG, 4' GAP, WHITE, THERMOPLASTIC G STOP BAR - 2'X10' SOLID WHITE, THERMOPLASTIC H LANE DROP LINE - 11' WIDE X 3' LONG, 12' GAP WHITE, THERMOPLASTIC I EDGE LINE - 4" WIDE, SOLID YELLOW, THERMOPLASTIC XX TABULATION KEY |
|-------------------------------------------------------------------------------------------------------------------------------------------------------------------------------------------------------------------------------------------------------------------------------------------------------------------------------------------------|---------------------------------------------------------------------------------------------------------------------------------------------------------------------------------------------------------------------------------------------------------------------------------------------------------------------------------------------------------------------------|-------------------------------------------------------------------------------------------------------------------------------------------------------------------------------------------------------------------------------------------------------------------------------------------------------------------------------------------------------|

LIGHTING NOTES

- STREET LIGHTS, FOUNDATIONS, CONDUIT, PULL BOXES, WIRING, AND SERVICE PEDESTALS SHALL BE INSTALLED IN ACCORDANCE WITH CDOT SECTIONS 613 AND 715, CITY SECTION 1.20, UNLESS OTHERWISE NOTED.
- PLASTIC CONDUIT SHALL BE SCHEDULE 80. UNDERGROUND CONDUIT SHALL BE BURIED A MINIMUM OF 24 INCHES BELOW FINISHED GRADE. CONDUIT UNDER ROADWAYS SHALL BE BURIED A MINIMUM OF 28 INCHES BELOW FINISHED GRADE.
- UNITED POWER SHALL TEST STREET LIGHTS IN ACCORDANCE WITH CDOT SECTION 613.

SIGNAGE AND STRIPING NOTES

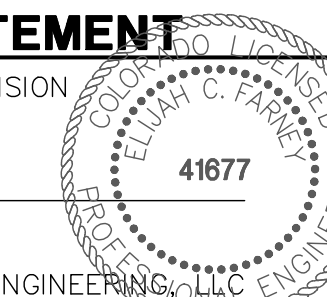
- ALL SIGNAGE AND STRIPING SHALL BE PLACED IN ACCORDANCE WITH THE MUTCD.
- SIGNS SHALL BE MOUNTED PER CITY OF GREELEY DETAILS S-41 TO S-47.
- EXISTING STRIPING SHALL BE REMOVED BY WATER JETTING ONLY.
- CONTRACTOR SHALL CONFIRM EXISTING STRIPING AND MAKE MODIFICATIONS TO NEW STRIPING AS NEEDED.
- ALL PAVEMENT MARKINGS SHALL BE HOT EXTRUDED THERMOPLASTIC FOR STRIPING AND PREFORMED FOR ARROWS AND LETTERING.
- SEE SHEET 34-37 FOR DETAILS



ENGINEER'S STATEMENT

PREPARED UNDER MY SUPERVISION

ELIJAH C. FARNEY, P.E.
COLORADO P.E. 41677
FOR AND ON BEHALF OF JR ENGINEERING, LLC



CENTERPLACE TURN LANE IMPROVEMENTS
SIGNAGE STRIPING AND LIGHTING PLAN
PHASE I

SHEET 21 OF 37

JOB NO. 39722.02

BY DATE

No. REVISION

H-SCALE 1"=20'
V-SCALE N/A
DATE 01/31/20
DESIGNED BY SRM
DRAWN BY SRM
CHECKED BY

PREPARED FOR
BRIAN WARD
CITY OF GREELEY—PUBLIC WORKS
1001 9TH AVENUE
GREELEY, CO 80631
(970) 350-9792

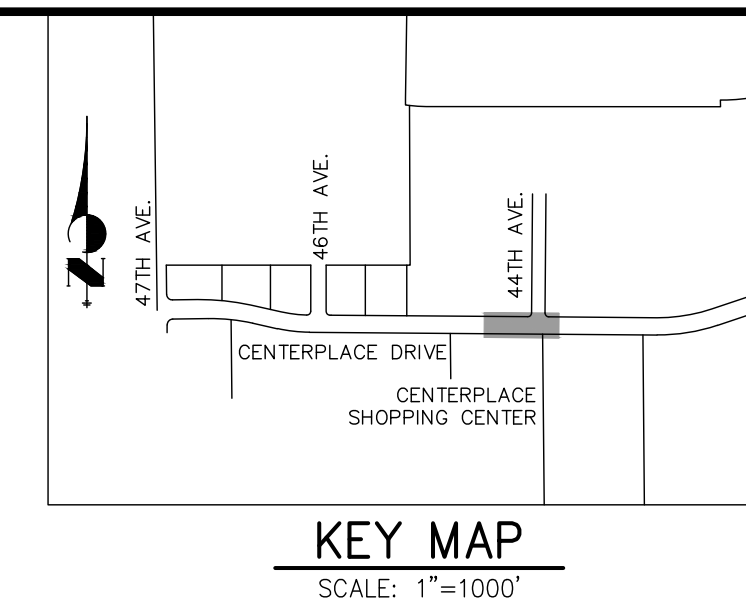
J.R. ENGINEERING
A Westman Company
Central 303-740-9888 • Colorado Springs 719-588-2583
Fort Collins 970-491-9888 • www.jrengineering.com

UNTIL SUCH TIME AS THESE DRAWINGS ARE APPROVED BY THE APPROPRIATE REVIEWING AGENCIES, JR ENGINEERING APPROVES THEIR USES DESIGNATED BY WRITTEN AUTHORIZATION.

STRIPING TABULATION					
STRIPE NUMBER	STATION	OFFSET	ALIGNMENT	NOTES	DESCRIPTION
105	118+11.95	32.00' (RT)	CL - CENTERPLACE		BEGIN STRIPE
106	119+44.31	32.00' (RT)	CL - CENTERPLACE		END STRIPE

SIGN TABULATION					
SIGN NUMBER	STATION	OFFSET	ALIGNMENT	NOTES	DESCRIPTION
205	117+31.94	36.50' (RT)	CL - CENTERPLACE		R3-20R 24"x36"
206	118+90.79	46.50' (RT)	CL - CENTERPLACE		R3-7R 30"x30"
207	119+41.85	6.16' (LT)	CL - CENTERPLACE		RESET KEEP RIGHT SIGN INSTALL 4" PVC SLEEVE
208	120+43.93	5.87' (RT)	CL - CENTERPLACE		RESET KEEP RIGHT SIGN INSTALL 4" PVC SLEEVE

STREET LIGHT TABULATION						
STREET LIGHT NUMBER	STATION	OFFSET	ALIGNMENT	ELEVATION	NOTES	DESCRIPTION
302	119+21.05	55.50' (RT)	CL - CENTERPLACE	4862.13		RESET STREET LIGHT



UNTIL SUCH TIME AS THESE DRAWINGS ARE APPROVED BY THE APPROPRIATE REVIEWING AGENCIES, JR ENGINEERING APPROVES THEIR USES DESIGNATED BY WRITTEN AUTHORIZATION.

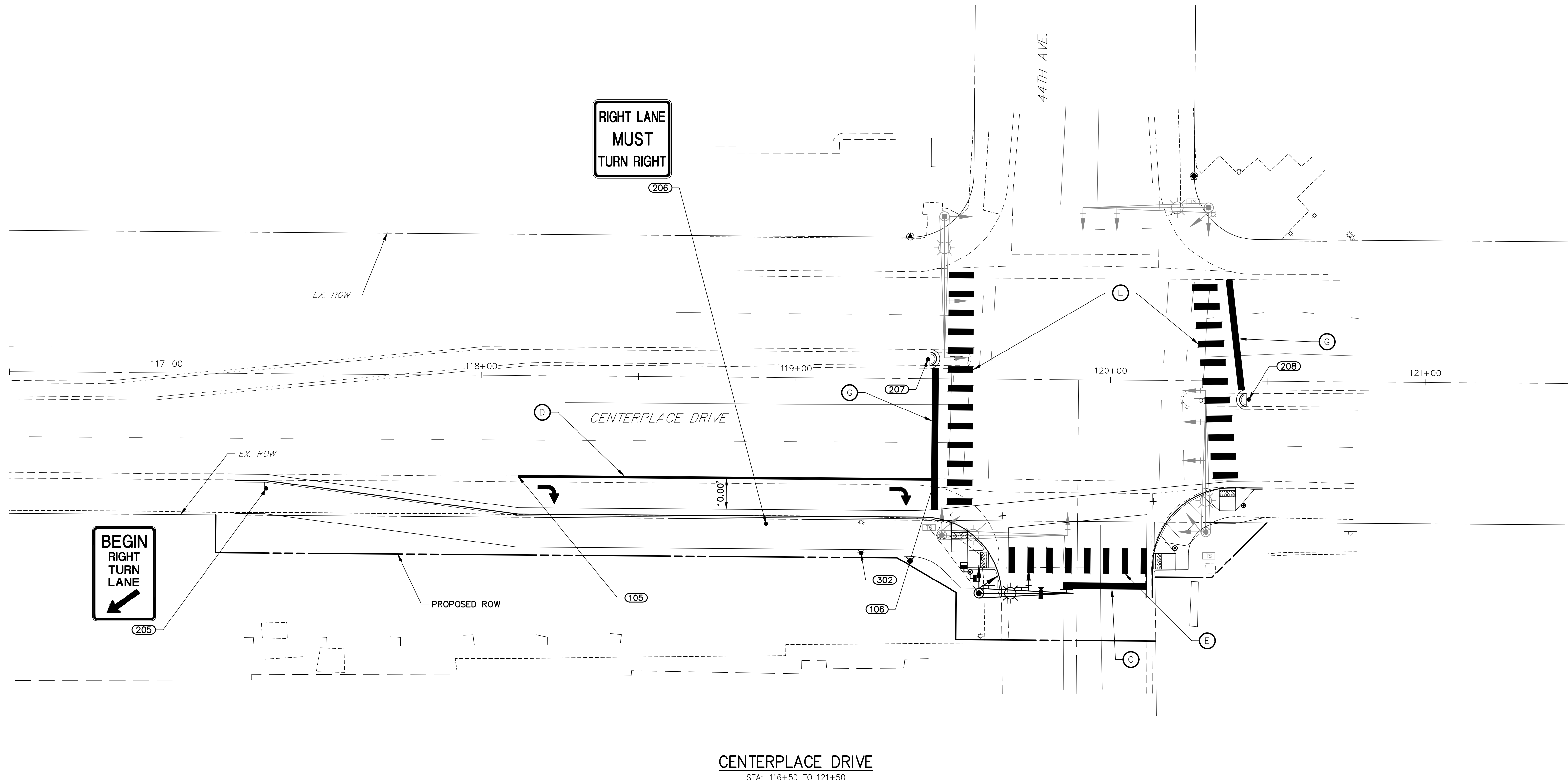
PREPARED FOR
BRIAN WARD
CITY OF GREELEY—PUBLIC WORKS
1001 9TH AVENUE
GREELEY, CO 80631
(970) 350-9792

J.R. ENGINEERING
A Westman Company
Central 303-740-9888 • Colorado Springs 719-588-2583
Fort Collins 970-491-9888 • www.jrengineering.com

BY	DATE	REVISION

CENTERPLACE TURN LANE IMPROVEMENTS
SIGNAGE STRIPING AND LIGHTING PLAN
PHASE II

SHEET 23 OF 37
JOB NO. 39722.02



CENTERPLACE DRIVE
STA: 116+50 TO 121+50

LEGEND

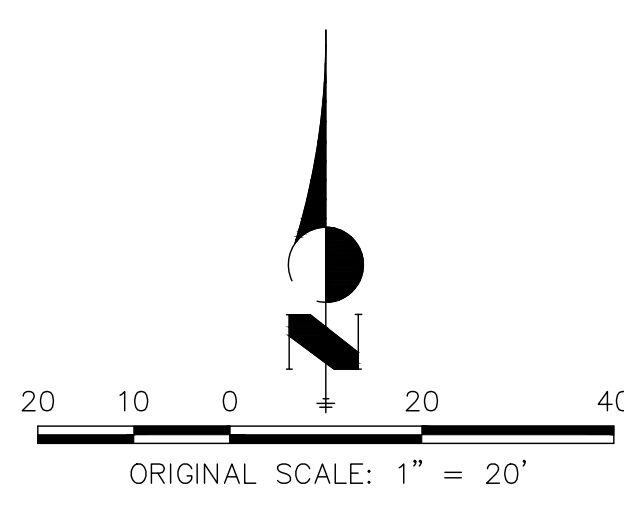
- | | | |
|------------------------------------------------------------------------------------------------------------------------------------------------------------------------------------------------------------------------------------------------------------------------------------------------------------------------|----------------------------------------------------------------------------------------------------------------------------------------------------------------------------------------------------------------------------------------------------------------------------------------------------------------------------------------------------------------------------------------------------|-------------------------------------------------------------------------------------------------------------------------------------------------------------------------------------------------------------------------------------------------------------------------------------------------------------------------------------------------------|
| <ul style="list-style-type: none"> ▾ PROPOSED SIGN ◊ CDOT DELINEATOR TYPE I (CRYSTAL) ⊗ CDOT DELINEATOR TYPE II (CRYSTAL) ⊗ CDOT DELINEATOR TYPE II (YELLOW) ⊗ CDOT DELINEATOR TYPE II (YELLOW) BACK TO BACK XX PROPOSED STRIPE ⊗ EXISTING STRIPE | <ul style="list-style-type: none"> ⊗ EXISTING SIGN A LANE LINE - 4" WIDE X 10' LONG, 30' GAP, WHITE THERMOPLASTIC B CENTER LINE - 4" WIDE, SOLID DOUBLE YELLOW, THERMOPLASTIC C EDGE LINE - 4" WIDE, SOLID WHITE, THERMOPLASTIC D CHANNELIZING LINE - 8" WIDE, SOLID WHITE THERMOPLASTIC E CROSSWALK - 2'X8' SOLID WHITE THERMOPLASTIC | <ul style="list-style-type: none"> F LANE EXTENSION LINE - 4" WIDE X 2' LONG, 4' GAP, WHITE, THERMOPLASTIC G STOP BAR - 2'X10' SOLID WHITE, THERMOPLASTIC H LANE DROP LINE - 11' WIDE X 3' LONG, 12' GAP WHITE, THERMOPLASTIC I EDGE LINE - 4" WIDE, SOLID YELLOW, THERMOPLASTIC XX TABULATION KEY |
|------------------------------------------------------------------------------------------------------------------------------------------------------------------------------------------------------------------------------------------------------------------------------------------------------------------------|----------------------------------------------------------------------------------------------------------------------------------------------------------------------------------------------------------------------------------------------------------------------------------------------------------------------------------------------------------------------------------------------------|-------------------------------------------------------------------------------------------------------------------------------------------------------------------------------------------------------------------------------------------------------------------------------------------------------------------------------------------------------|

LIGHTING NOTES

- STREET LIGHTS, FOUNDATIONS, CONDUIT, PULL BOXES, WIRING, AND SERVICE PEDESTALS SHALL BE INSTALLED IN ACCORDANCE WITH CDOT SECTIONS 613 AND 715, CITY SECTION 1.20, UNLESS OTHERWISE NOTED.
- PLASTIC CONDUIT SHALL BE SCHEDULE 80. UNDERGROUND CONDUIT SHALL BE BURIED A MINIMUM OF 24 INCHES BELOW FINISHED GRADE. CONDUIT UNDER ROADWAYS SHALL BE BURIED A MINIMUM OF 28 INCHES BELOW FINISHED GRADE.
- UNITED POWER SHALL TEST STREET LIGHTS IN ACCORDANCE WITH CDOT SECTION 613.

SIGNAGE AND STRIPING NOTES

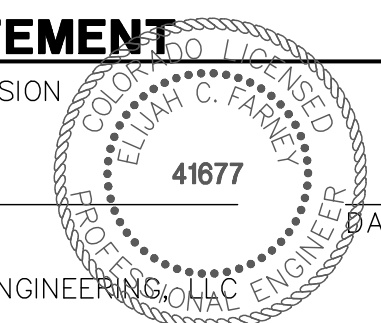
- ALL SIGNAGE AND STRIPING SHALL BE PLACED IN ACCORDANCE WITH THE MUTCD.
- SIGNS SHALL BE MOUNTED PER CITY OF GREELEY DETAILS S-41 TO S-47.
- EXISTING STRIPING SHALL BE REMOVED BY WATER JETTING ONLY.
- CONTRACTOR SHALL CONFIRM EXISTING STRIPING AND MAKE MODIFICATIONS TO NEW STRIPING AS NEEDED.
- ALL PAVEMENT MARKINGS SHALL BE HOT EXTRUDED THERMOPLASTIC FOR STRIPING AND PREFORMED FOR ARROWS AND LETTERING.
- SEE SHEET 34-37 FOR DETAILS



ENGINEER'S STATEMENT

PREPARED UNDER MY SUPERVISION

ELIJAH C. FARNEY, P.E.
COLORADO P.E. 41677
FOR AND ON BEHALF OF JR ENGINEERING, LLC

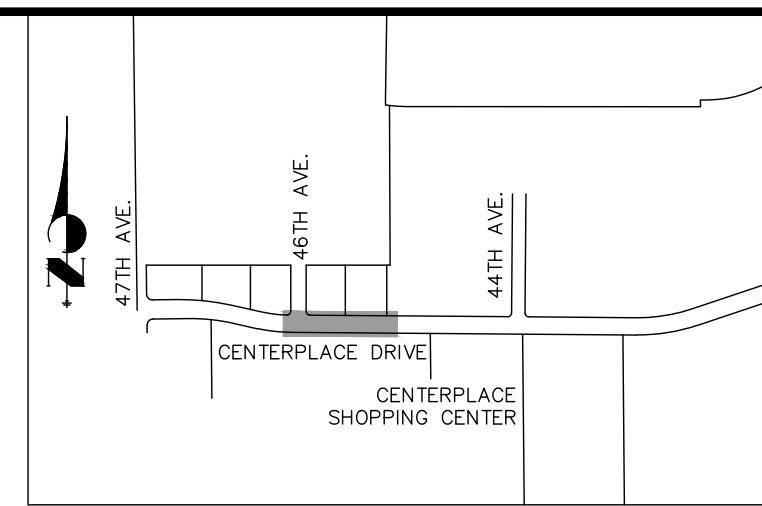


X:\397000\39722\39722.dwg, 1/30/2020 11:24:41 AM, PFC

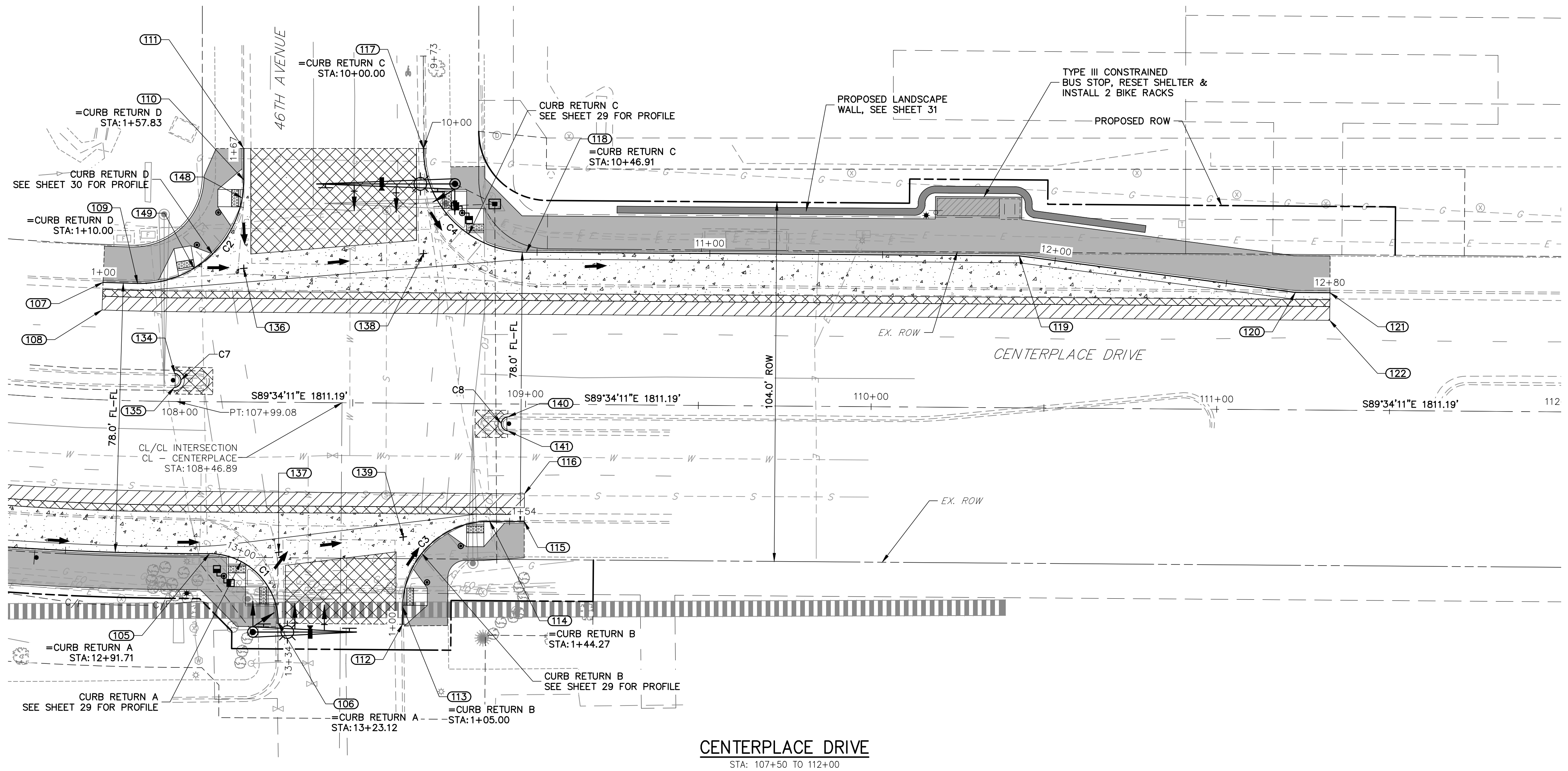
POINT TABULATION						
POINT NUMBER	STATION	OFFSET	ALIGNMENT	ELEVATION	NOTES	DESCRIPTION
105	108+08.89	44.00' (RT)	CL - CENTERPLACE	4864.54		PCR/LP
106	108+28.89	64.00' (RT)	CL - CENTERPLACE	4865.39		PCR/MATCH EX. C&G
107	107+76.46	34.00' (LT)	CL - CENTERPLACE	4865.50	±	MATCH EX. C&G
108	107+76.46	26.00' (LT)	CL - CENTERPLACE	4865.77	±	MATCH EX. ASPH
109	107+86.94	34.00' (LT)	CL - CENTERPLACE	4865.31		PCR
110	108+17.98	64.31' (LT)	CL - CENTERPLACE	4864.83		PCR
111	108+17.91	73.40' (LT)	CL - CENTERPLACE	4864.87	±	MATCH EX. C&G
112	108+64.89	64.00' (RT)	CL - CENTERPLACE	4865.03	±	MATCH EX. C&G
113	108+64.89	59.00' (RT)	CL - CENTERPLACE	4864.81		PCR
114	108+89.89	34.00' (RT)	CL - CENTERPLACE	4863.26		PCR

POINT TABULATION						
POINT NUMBER	STATION	OFFSET	ALIGNMENT	ELEVATION	NOTES	DESCRIPTION
115	108+99.89	34.00' (RT)	CL - CENTERPLACE	4863.06	±	MATCH EX. C&G
116	108+99.88	26.00' (RT)	CL - CENTERPLACE	4863.42	±	MATCH EX. ASPH
117	108+69.91	73.78' (LT)	CL - CENTERPLACE	4864.30		PCR/MATCH EX. C&G
118	108+99.91	44.00' (LT)	CL - CENTERPLACE	4862.81		PCR
119	110+42.52	44.00' (LT)	CL - CENTERPLACE	4860.77		PI
120	111+22.52	34.00' (LT)	CL - CENTERPLACE	4860.16		PI
121	111+32.52	34.00' (LT)	CL - CENTERPLACE	4860.01	±	MATCH EX. C&G
122	111+32.52	26.00' (LT)	CL - CENTERPLACE	4860.31	±	MATCH EX. ASPH
134	107+98.41	8.08' (LT)	CL - CENTERPLACE	4865.82	±	MATCH EX. C&G NOSE MEDIAN
135	107+98.35	4.06' (LT)	CL - CENTERPLACE	4865.89	±	MATCH EX. C&G NOSE MEDIAN

POINT TABULATION						
POINT NUMBER	STATION	OFFSET	ALIGNMENT	ELEVATION	NOTES	DESCRIPTION
136	108+18.17	38.68' (LT)	CL - CENTERPLACE	4864.59		FL-FL INTERCEPT
137	108+28.89	43.42' (RT)	CL - CENTERPLACE	4864.20		FL-FL INTERCEPT
138	108+70.13	43.34' (LT)	CL - CENTERPLACE	4863.36		FL-FL INTERCEPT
139	108+64.89	38.75' (RT)	CL - CENTERPLACE	4863.61		FL-FL INTERCEPT
140	108+94.91	3.76' (RT)	CL - CENTERPLACE	4864.01	±	MATCH EX. C&G NOSE MEDIAN
141	108+94.89	7.78' (RT)	CL - CENTERPLACE	4863.97	±	MATCH EX. C&G NOSE MEDIAN
148	108+17.56	59.06' (LT)	CL - CENTERPLACE	4864.85		LP
149	108+03.79	38.59' (LT)	CL - CENTERPLACE	4865.06		LP



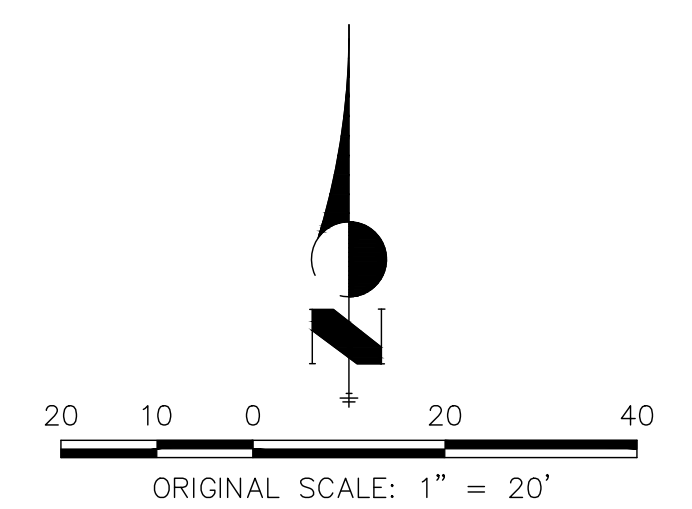
CURVE TABLE			
CURVE	DELTA	RADIUS	LENGTH
C1	90°00'00"	20.00'	31.42'
C3	90°00'00"	25.00'	39.27'



LEGEND

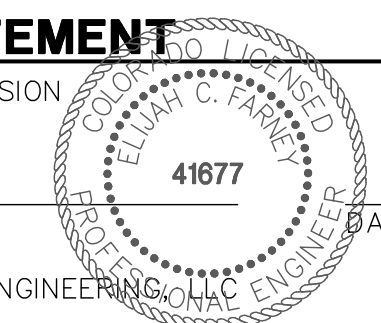
- PROPOSED 2" MILL AND OVERLAY (SEE SHEET 4 FOR PAVEMENT SECTION DETAILS)
- PROPOSED ASPHALT (SEE SHEET 4 FOR PAVEMENT SECTION DETAILS)
- PROPOSED CONCRETE (SEE SHEET 4 FOR PAVEMENT SECTION DETAILS)
- PROPOSED CONCRETE SIDEWALK (6" DEPTH)

- NOTES**
- ALL STATIONING IS ROADWAY CENTERLINE UNLESS OTHERWISE NOTED. ALL ELEVATIONS AND OFFSETS ARE TO FLOWLINE UNLESS OTHERWISE NOTED.
 - UNLESS OTHERWISE NOTED, C&G SHALL FOLLOW CITY OF GREELEY S-56 DETAIL. SEE SHEET 35.
 - ALL SAWCUTS SHALL BE TO A CLEAN VERTICAL FACE.
 - ALL CURB RAMP WIDTHS SHALL MATCH THE WIDTH OF THE SIDEWALK THEY ARE CONNECTING TO FOR THE THROUGH MOVEMENTS, WITH THE MINIMUM WIDTH BEING 5 FEET WIDE.



ENGINEER'S STATEMENT

PREPARED UNDER MY SUPERVISION
 ELIJAH C. FARNEY, P.E.
 COLORADO P.E. 41677
 FOR AND ON BEHALF OF JR ENGINEERING, LLC



UNTIL SUCH TIME AS THESE DRAWINGS ARE APPROVED BY THE APPROPRIATE REVIEWING AGENCIES, JR ENGINEERING APPROVES THEIR USES DESIGNATED BY WRITTEN AUTHORIZATION.

PREPARED FOR
BRIAN WARD
 CITY OF GREELEY-PUBLIC WORKS
 1001 9TH AVENUE
 GREELEY, CO 80631
 (970) 350-9792

J.R. ENGINEERING
 A Westman Company
 Centennial 303-740-9888 • Colorado Springs 719-588-2583
 Fort Collins 970-491-9888 • www.jrengineering.com

BY: _____ DATE: _____

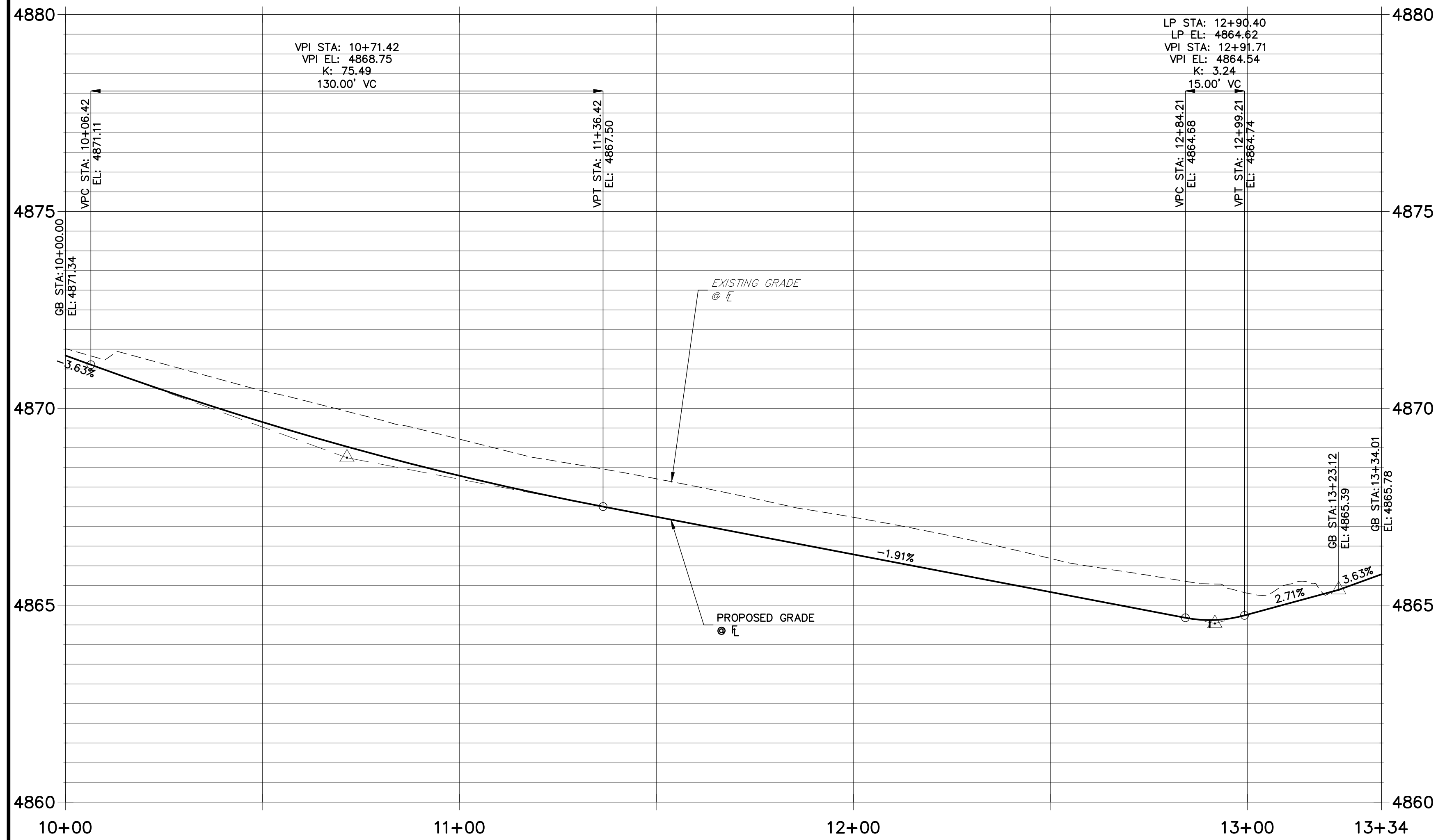
No. REVISION: _____

H-SCALE: 1"=20'
 V-SCALE: N/A
 DATE: 01/31/20
 DESIGNED BY: SRM
 DRAWN BY: SRM
 CHECKED BY: _____

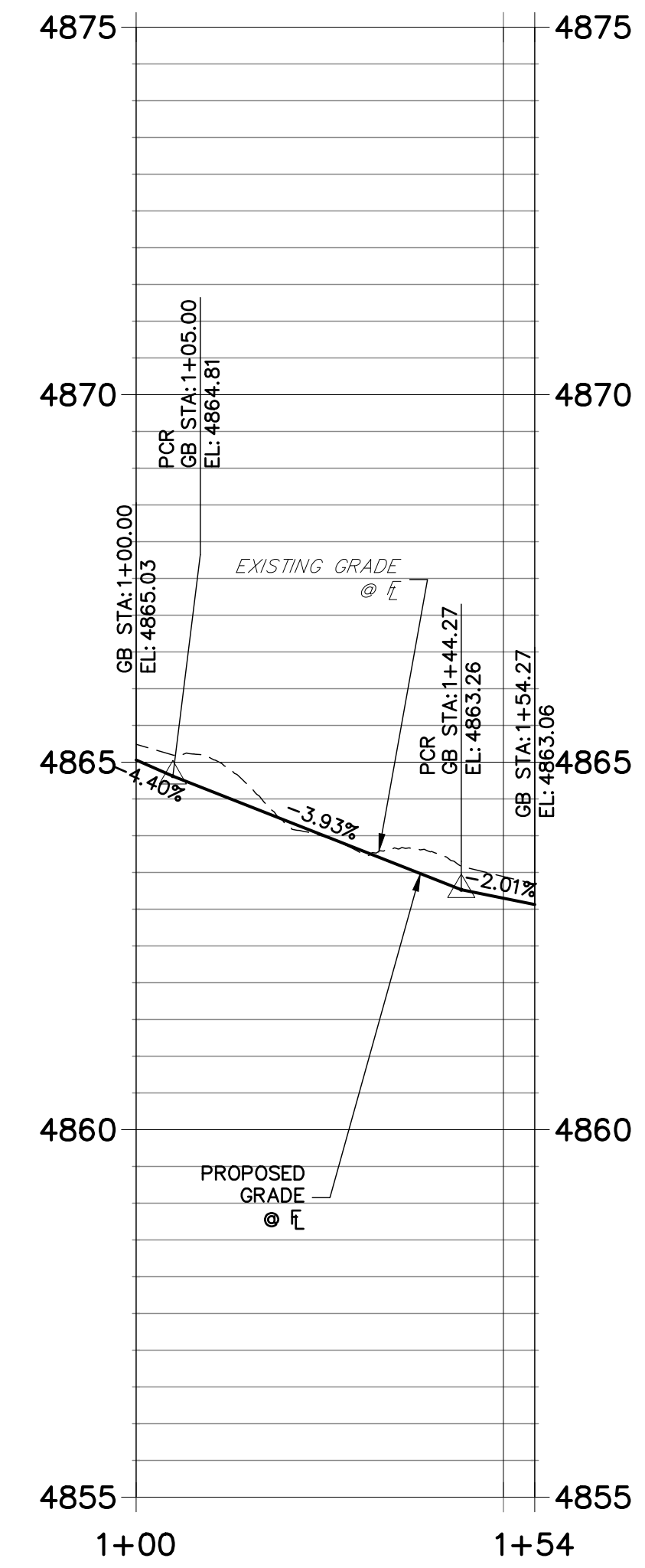
CENTERPLACE TURN LANE IMPROVEMENTS STREET PLAN PHASE I

SHEET 25 OF 37
 JOB NO. 39722.02

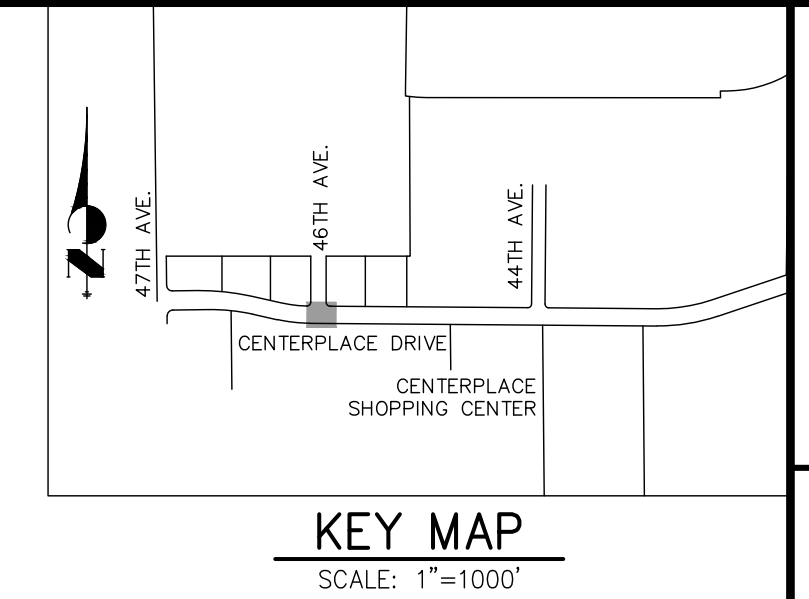
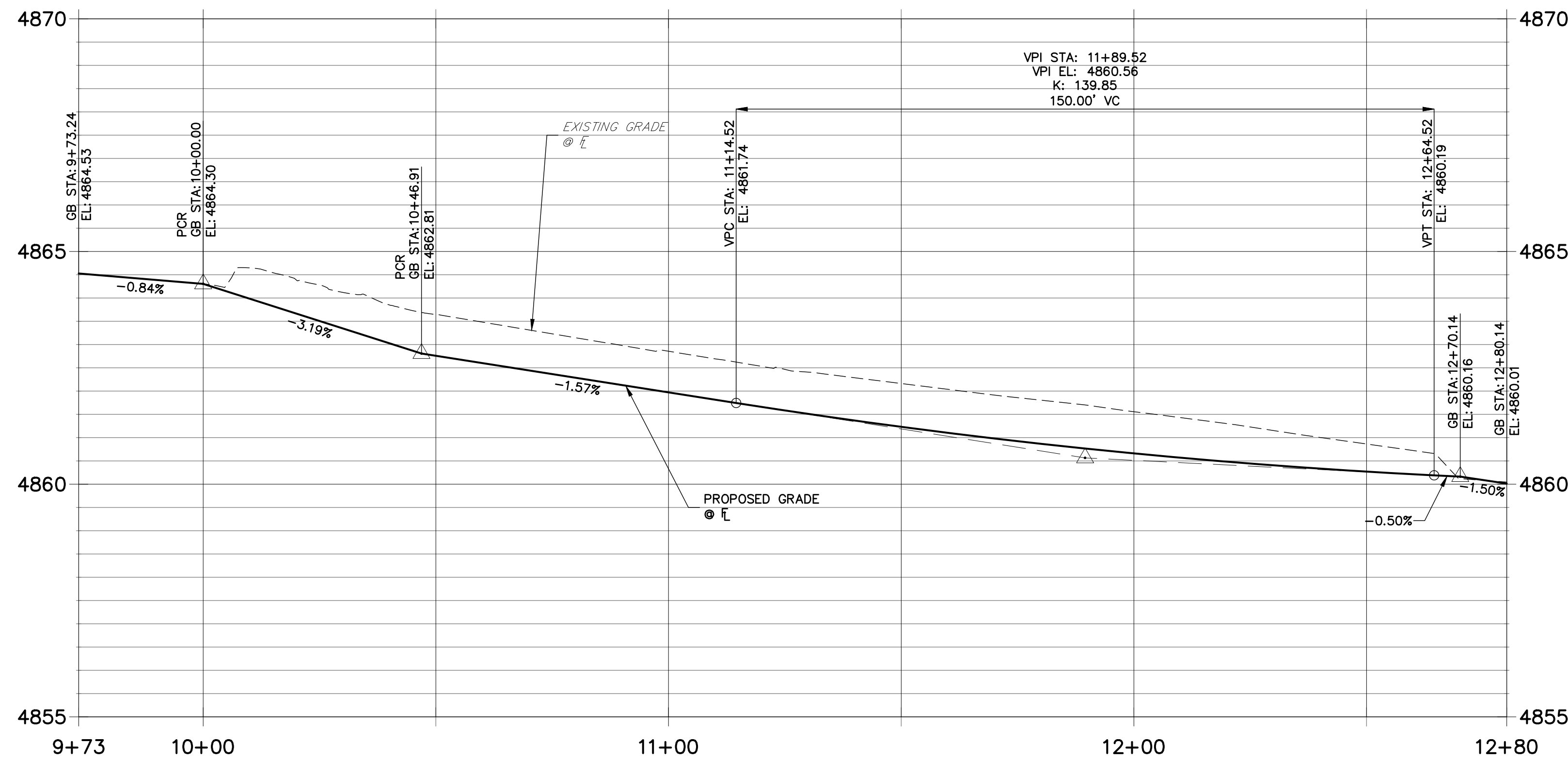
**CURB RETURN A PROFILE
STA 10+00.00 TO 13+34.01**



**CURB RETURN B PROFILE
STA 1+00.00 TO 1+54.27**



**CURB RETURN C PROFILE
STA 9+73.24 TO 12+80.14**



UNTIL SUCH TIME AS THESE DRAWINGS ARE APPROVED BY THE APPROPRIATE REVIEWING AGENCIES, JR ENGINEERING APPROVES THEIR USES DESIGNATED BY WRITTEN AUTHORIZATION.

PREPARED FOR
BRIAN WARD
CITY OF GREELEY—PUBLIC WORKS
1001 9TH AVENUE
GREELEY, CO 80631
(970) 350-9792

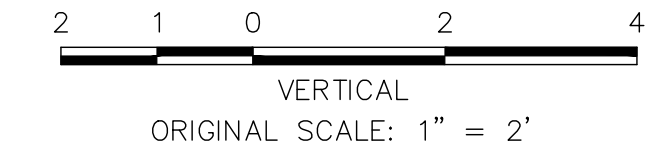
J.R. ENGINEERING
A Westman Company
Central 303-740-9383 • Colorado Springs 719-588-2583
Fort Collins 970-491-9888 • www.jrengineering.com

BY	DATE	NO.	REVISION

H-SCALE	N/A	V-SCALE	1"=2'	DATE	DESIGNED BY	DRAWN BY	CHECKED BY
				01/31/20	BPK	SRM	

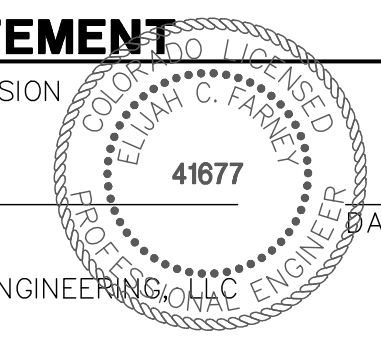
CENTERPLACE TURN LANE IMPROVEMENTS	CURB RETURN PROFILES
	PHASE I
SHEET 29 OF 37	JOB NO. 39722.02

- NOTES**
- ALL STATIONING IS ROADWAY CENTERLINE UNLESS OTHERWISE NOTED. ALL ELEVATIONS AND OFFSETS ARE TO FLOWLINE UNLESS OTHERWISE NOTED.
 - UNLESS OTHERWISE NOTED, C&G SHALL FOLLOW CITY OF GREELEY S-16 DETAIL. SEE SHEET 35.
 - ALL SAWCUTS SHALL BE TO A CLEAN VERTICAL FACE.
 - ALL CURB RAMP WIDTHS SHALL MATCH THE WIDTH OF THE SIDEWALK THEY ARE CONNECTING TO FOR THE THROUGH MOVEMENTS, WITH THE MINIMUM WIDTH BEING 5 FEET WIDE.



ENGINEER'S STATEMENT

PREPARED UNDER MY SUPERVISION

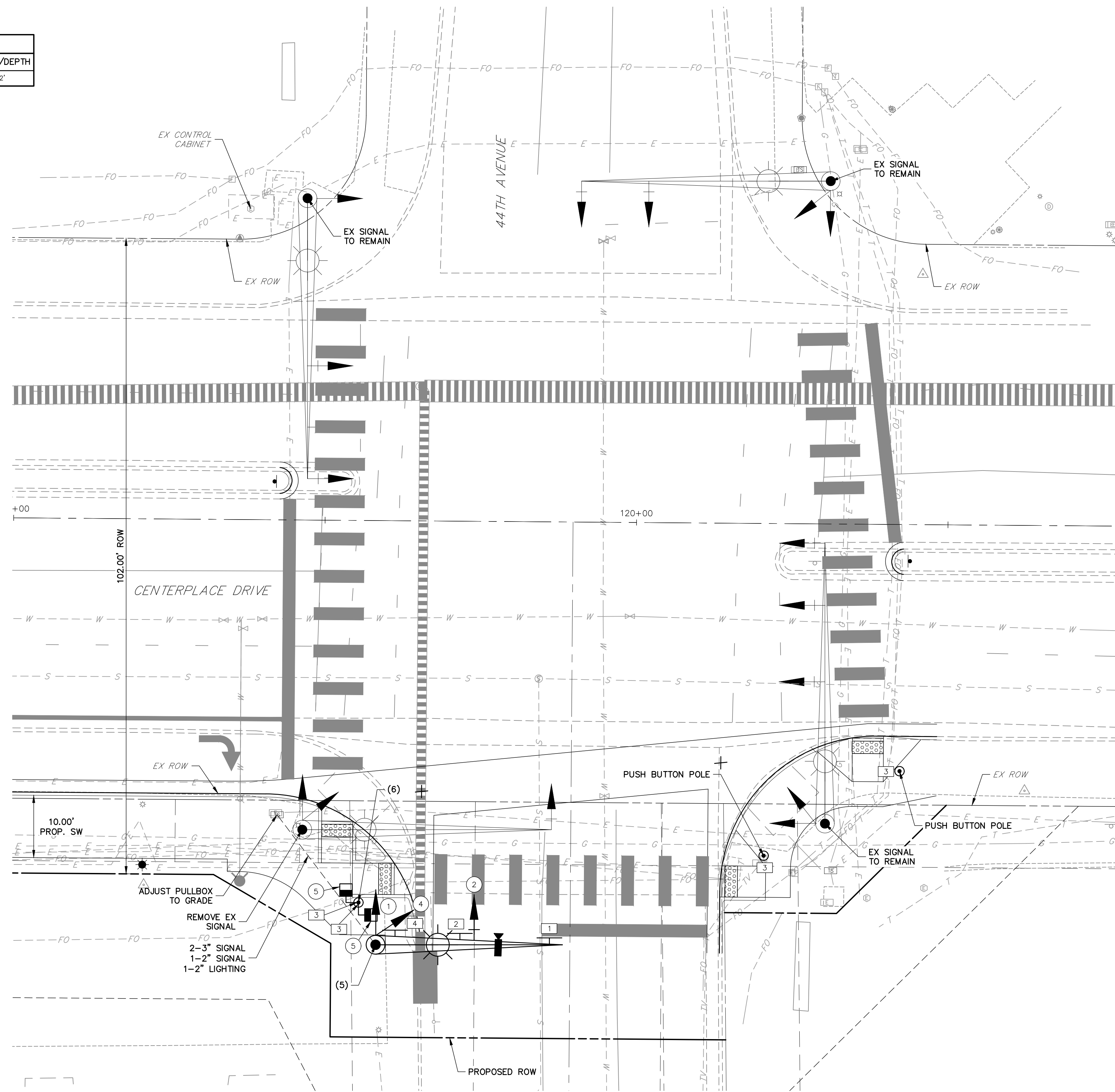


ELIJAH C. FARNEY, P.E.
COLORADO P.E. 41677
FOR AND ON BEHALF OF JR ENGINEERING

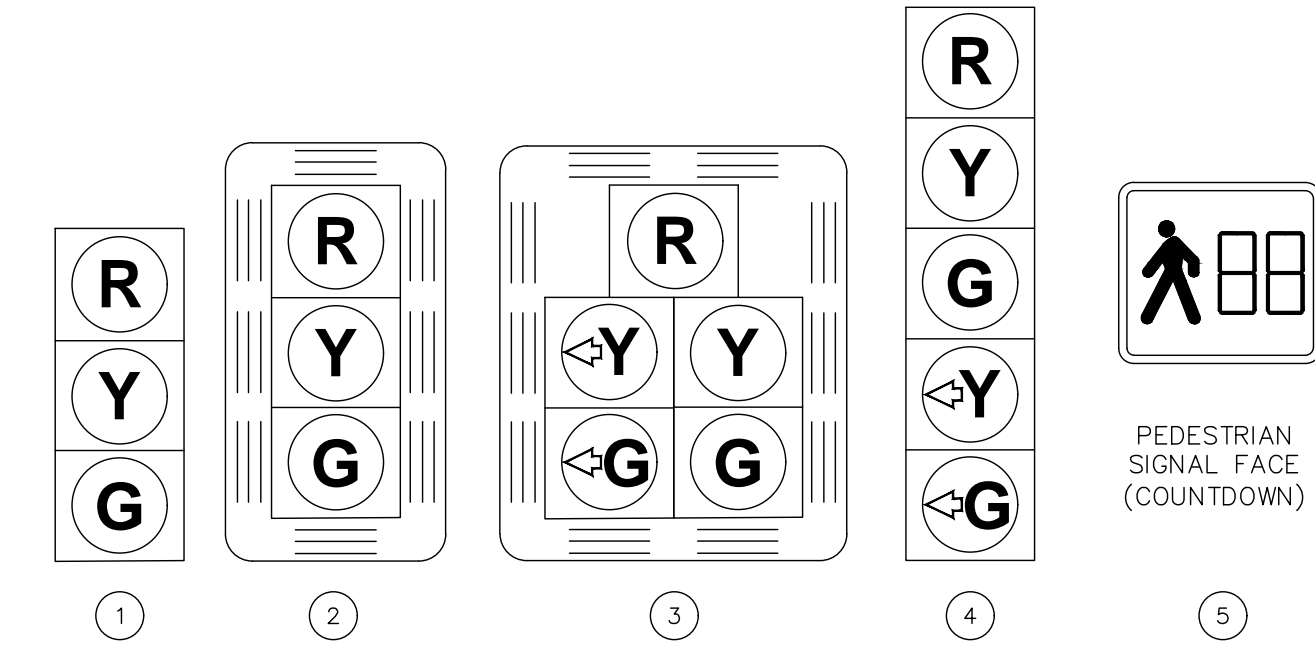
DATE

SIGNAL POLE SCHEDULE						
POLE NUMBER	LOCATION	STATION	OFFSET	ELEVATION	MAST ARM	BASE DIA./DEPTH
(5)	SW CORNER	119+58.61	68.08' (RT)	4863.74	30.00	36" / 12'

PEDESTAL POLE SCHEDULE					
POLE NUMBER	LOCATION	NORTHING	EASTING	ELEVATION	BASE DIA./DEPTH
(6)	SW CORNER	387957.67	209952.44	4862.80	18" / 4'

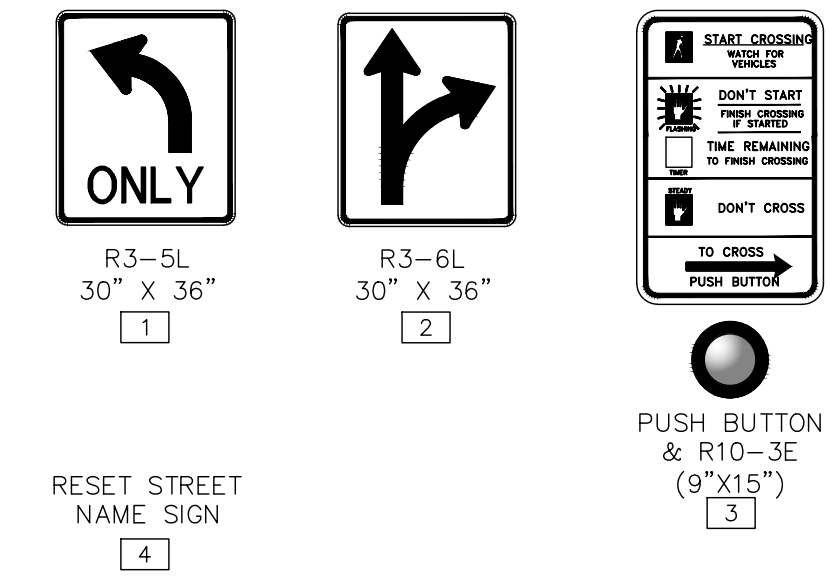


TRAFFIC SIGNAL FACE LEGEND

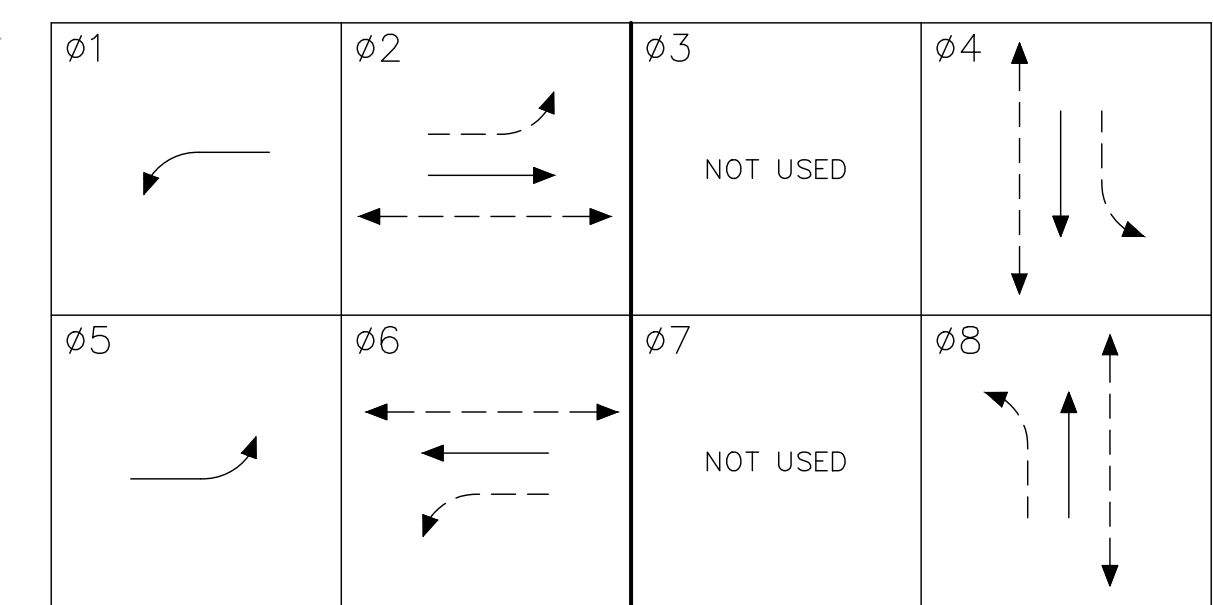


- ALL VEHICLE SIGNAL HEADS SHALL BE POLYCARBONATE WITH 12-INCH SECTIONS AND TUNNEL VISORS.
- ALL VEHICLE AND PEDESTRIAN SIGNAL HEADS SHALL BE BLACK IN COLOR.
- ALL RED, YELLOW AND GREEN "BALL AND ARROW" VEHICLE INDICATIONS AND ALL PEDESTRIAN SYMBOL INDICATIONS SHALL BE APPROVED LED TYPE.

SIGNAGE LEGEND



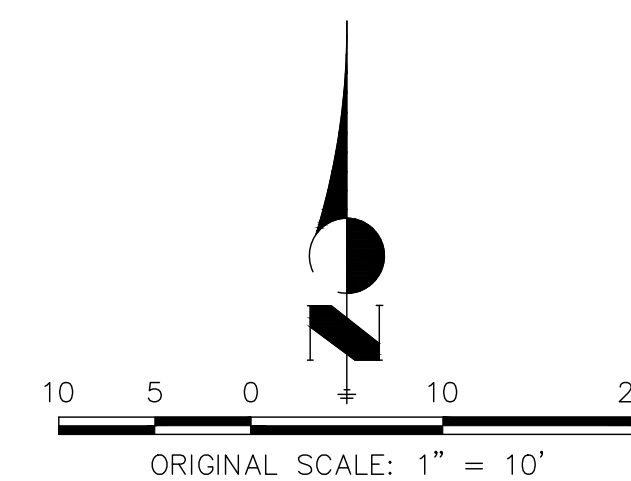
SIGNAL PHASING DIAGRAM



- PROTECTED MOVEMENT
- - - PERMISSIVE MOVEMENT
- - - PEDESTRIAN MOVEMENT

NOTES

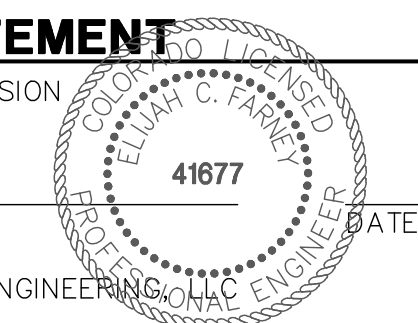
1. EXTEND 1-2" CONDUIT AND 1-3" CONDUIT TO ALL PEDESTAL POLES AND PUSH BUTTON POLES.
2. AT ALL PUSH BUTTON POLE LOCATIONS, CONCRETE SHALL BE PLACED IN THE AREA BETWEEN THE SIDEWALK AND THE BASE OF THE POLE.
3. ELEVATIONS ARE TO FINISHED GRADE UNLESS OTHERWISE NOTED.
4. THE EXISTING SIGNALS SHALL BE REMOVED AFTER THE NEW SIGNALS ARE INSTALLED AND PUT INTO OPERATION.
5. ALL TRAFFIC SIGNALS SHALL BE IN COMPLIANCE WITH THE CURRENT MUTCD STANDARDS.



ENGINEER'S STATEMENT

PREPARED UNDER MY SUPERVISION

ELIJAH C. FARNEY, P.E.
COLORADO P.E. 41677
FOR AND ON BEHALF OF JR ENGINEERING



UNTIL SUCH TIME AS THESE DRAWINGS ARE APPROVED BY THE APPROPRIATE REVIEWING AGENCIES, OR ENGINEERING APPROVES THEIR USE, THESE DRAWINGS ARE DESIGNATED BY WRITTEN AUTHORIZATION.

PREPARED FOR
BRIAN WARD
CITY OF GREELEY—PUBLIC WORKS
1001 9TH AVENUE
GREELEY, CO 80631
(970) 350-9792

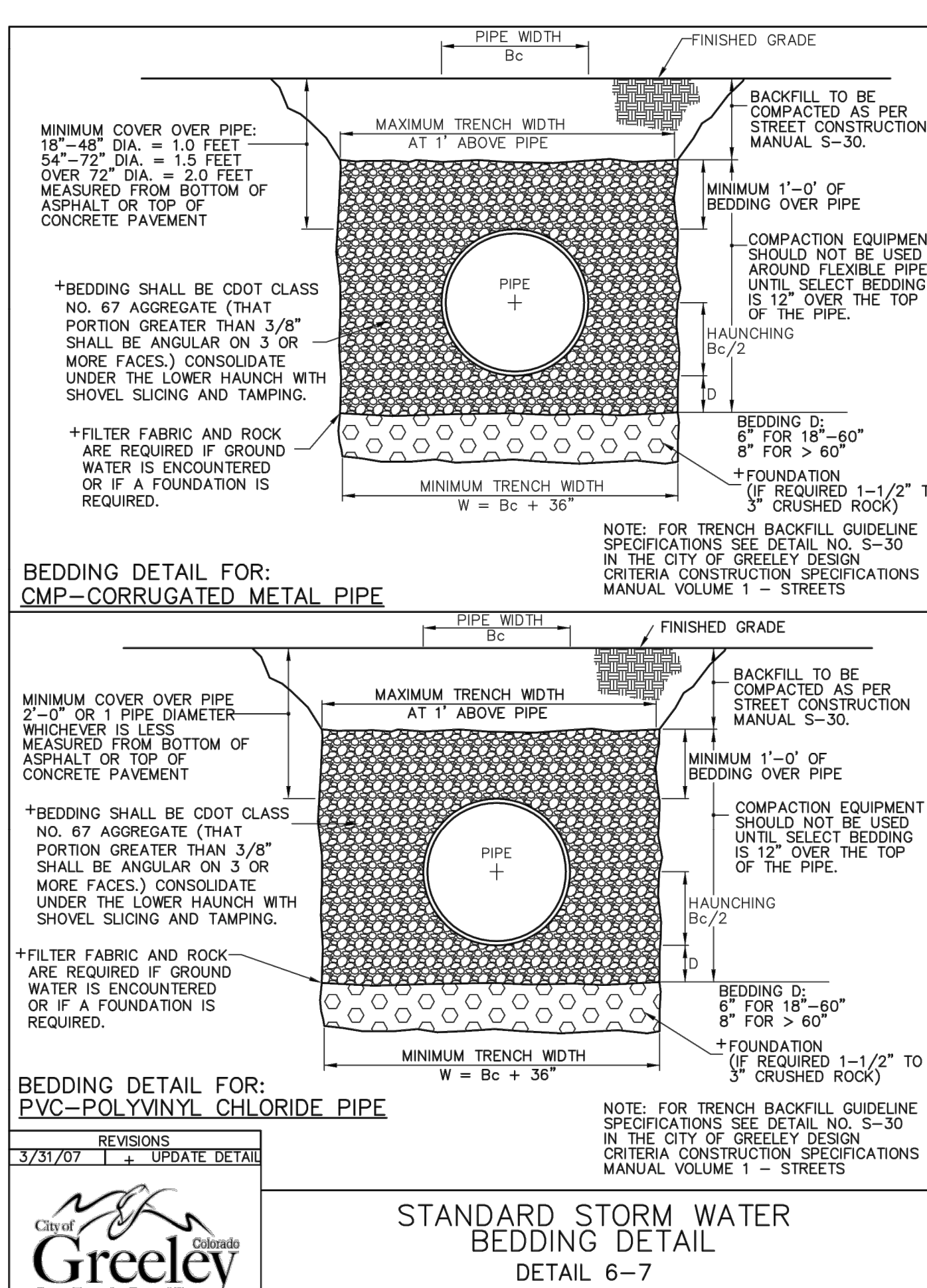
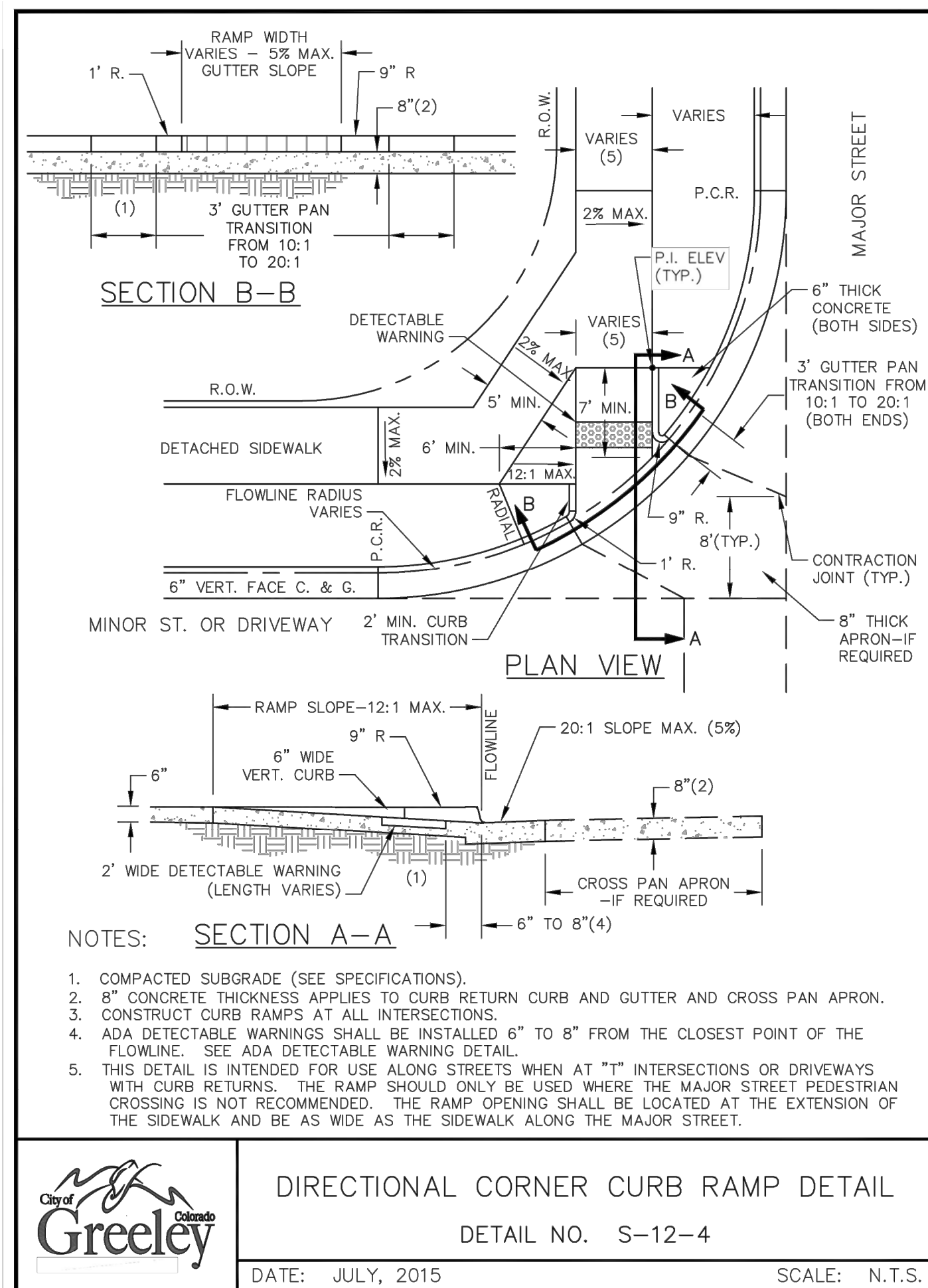
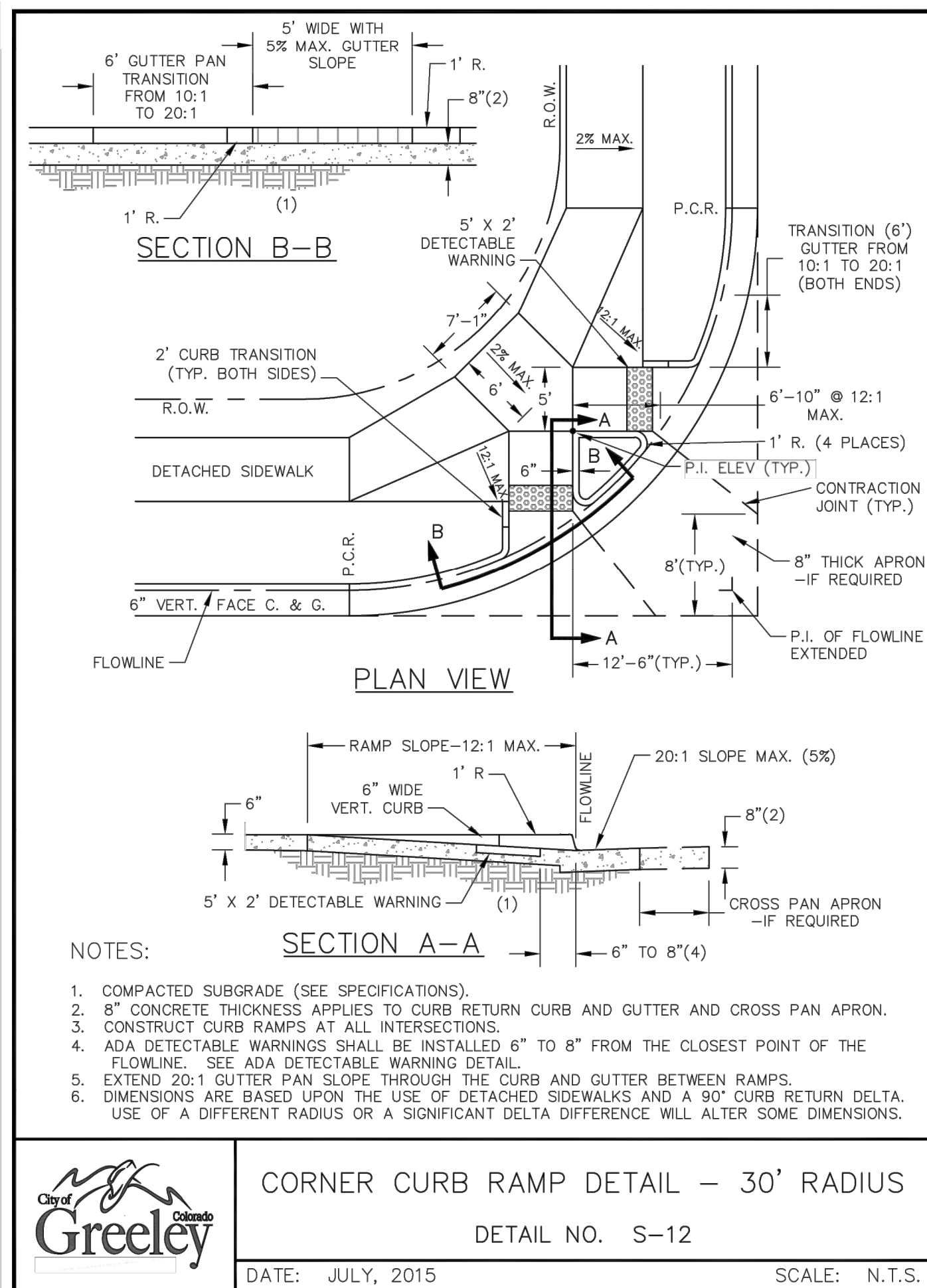
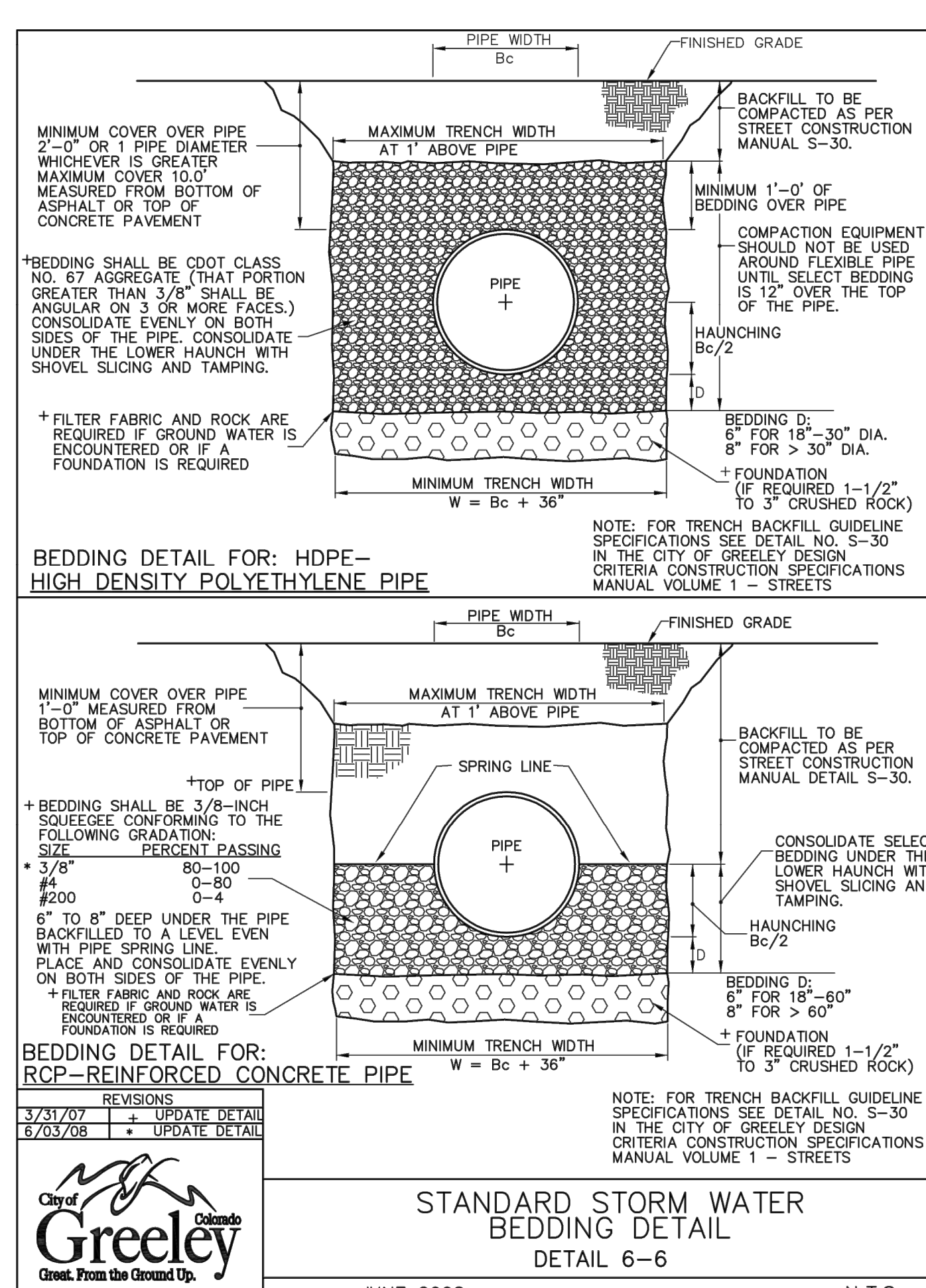
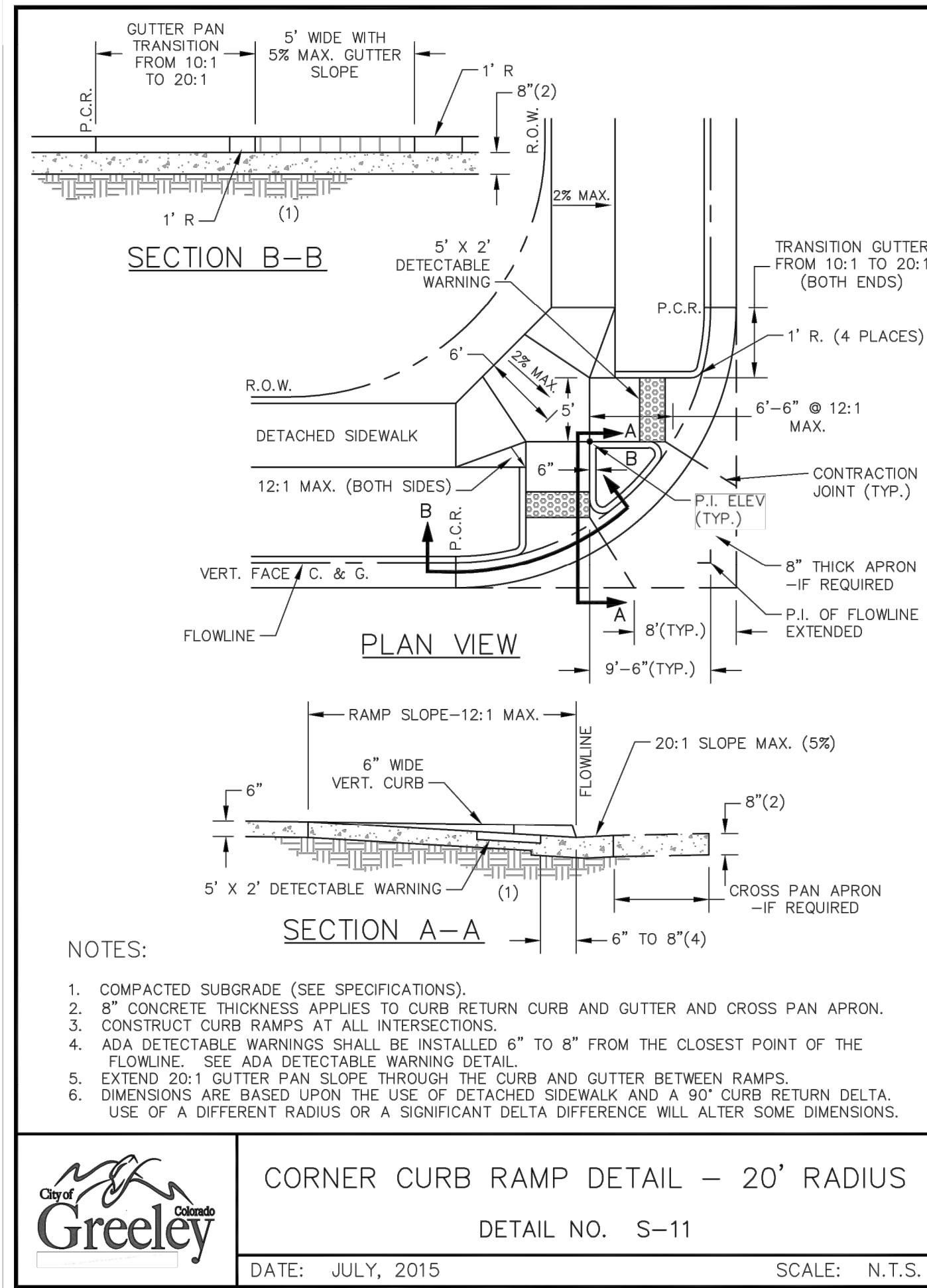
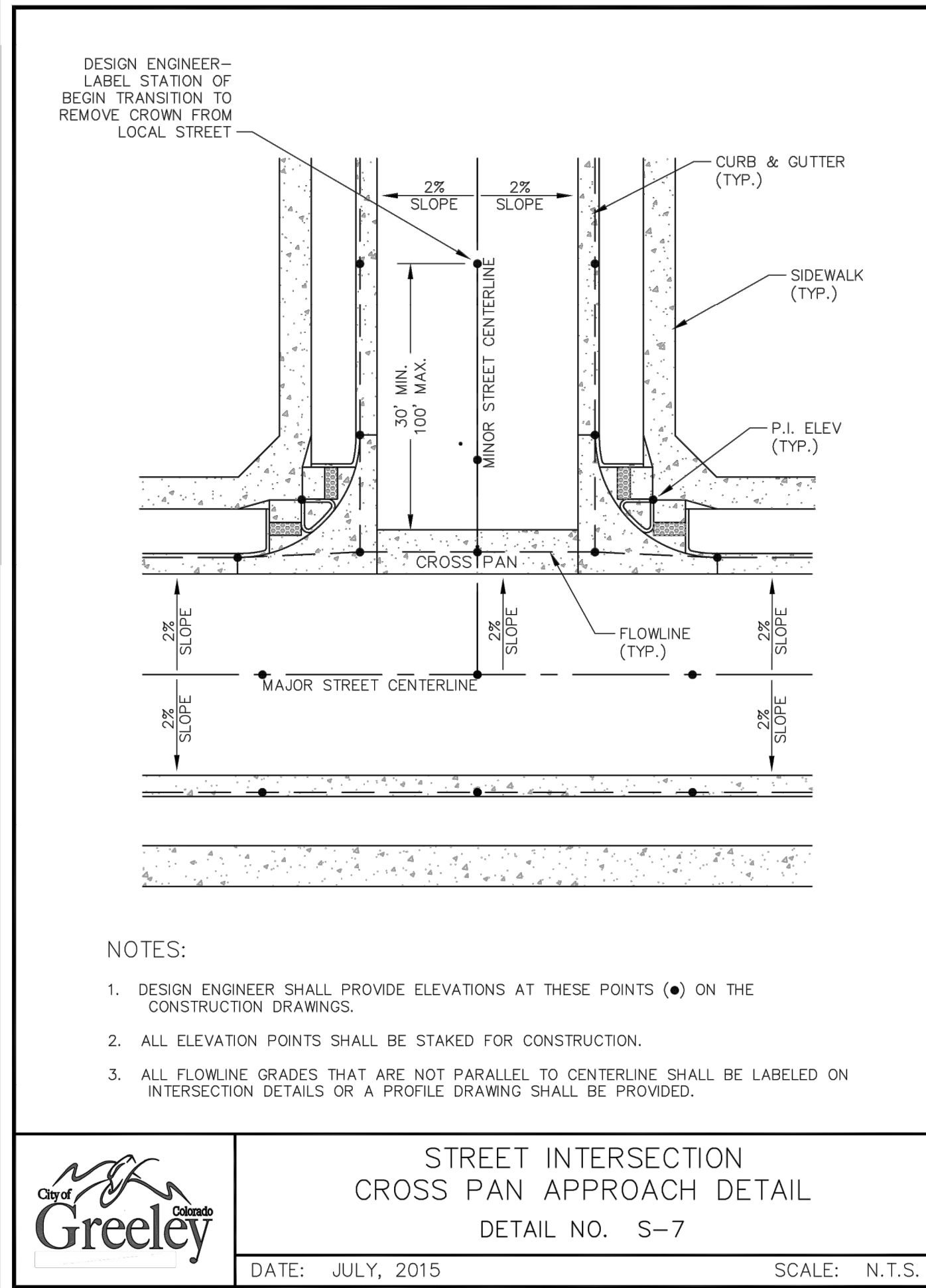
J.R. ENGINEERING
A Westman Company
Central 303-740-9383 • Colorado Springs 719-588-2583
Fort Collins 970-491-9888 • www.jrengineering.com

BY	DATE	NO.	REVISION

H-SCALE	V-SCALE	DATE	DESIGNED BY	DRAWN BY	CHECKED BY
1"=10'	N/A	01/31/20	ECF	SRM	

CENTERPLACE TURN LANE IMPROVEMENTS
TRAFFIC SIGNAL PLAN
PHASE II

SHEET 33 OF 37
JOB NO. 39722.02



ENGINEER'S STATEMENT

STANDARD DETAILS SHOWN WERE REVIEWED ONLY AS TO THEIR APPLICATION ON THIS PROJECT.

ELIJAH C. FARNEY, P.E.
COLORADO P.E. 41677
FOR AND ON BEHALF OF JR ENGINEERING, LLC

41677

UNTIL SUCH TIME AS THESE DRAWINGS ARE APPROVED BY THE APPROPRIATE REVIEWING AGENCIES, JR ENGINEERING APPROVES THEIR USE. THESE DRAWINGS ARE DESIGNATED BY WRITTEN AUTHORIZATION.

PREPARED FOR
BRIAN WARD
CITY OF GREELEY—PUBLIC WORKS
1001 9TH AVENUE
GREELEY, CO 80631
(970) 350-9792

J.R. ENGINEERING
A Westman Company
Central 303-740-9888 • Colorado Springs 719-588-2583
Fort Collins 970-491-9888 • www.jrengineering.com

BY DATE

NO.	REVISION	DATE	DESIGNED BY	DRAWN BY	CHECKED BY
N/A	N/A	01/31/20	N/A	N/A	N/A

CENTERPLACE TURN LANE IMPROVEMENTS DETAIL SHEETS

SHEET 34 OF 37

JOB NO. 39722.02