

# Addendum #2



## Capital Project Committee

### Project Information

Project Name:	Balsam Park Improvements
Bid Number:	FD21-02-034
Date:	March 5, 2021
Project Manager:	Brian Ward

### Addendum Items

Due to the corona-virus, the City is requiring the following for submitting bids and the opening of bids:

**See below for Bid Opening Instructions - Thursday, March 11, 2020 at 2:00pm**

Join Zoom Meeting

<https://greeleygov.zoom.us/j/85740512152>

Meeting ID: 857 4051 2152

Passcode: 062325

Dial by your location

+1 346 248 7799 US (Houston)

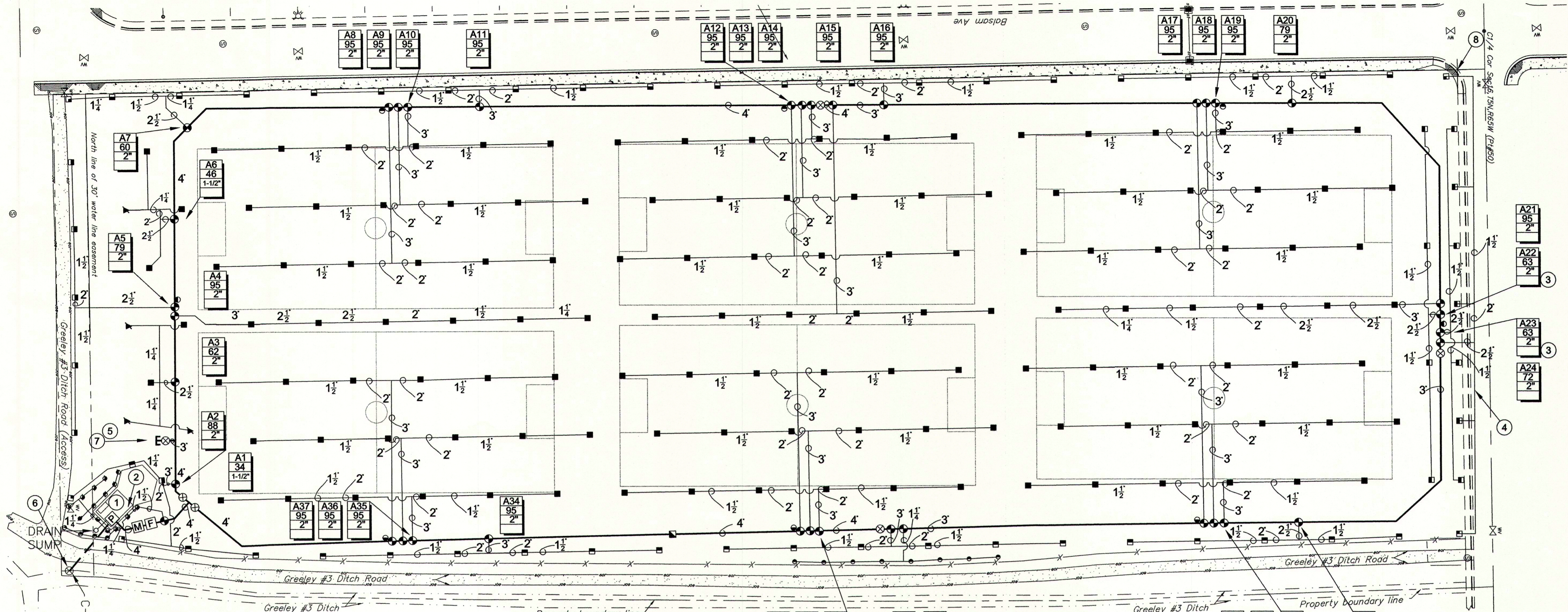
+1 669 900 6833 US (San Jose)

+1 253 215 8782 US (Tacoma)

Item 1 Are there any existing irrigation as-builts that can be referenced prior to bidding? If not, please clarify the size of the existing mainline in the designated work area. [Existing mainline is 4". I've attached as-builts for reference.](#)

Item 2 Can the valves that can be reused be clarified? And at which new location are they to be used? [This will probably have to be done in the field as we don't know the condition of the existing valves. The plans show 5 existing valves on each side of the park \(10 total\) in the new construction area.](#)

Item 3	Will the use of saddles to install new valves on the existing mainline be acceptable? If not, please clarify the materials and method to install new irrigation items on the existing mainline. <b>Tapping saddles will not be acceptable. There is a detail for ductile iron, service tee's and joint restraints that will need used on the mainline when adding valves.</b>
Item 4	If new irrigation control wire is required what gauge is the wire (12 or 14)? <b>All new wire is two-wire cable as shown on the irrigation schedule.</b>
Item 5	Will building permits be required for structures? Is any cost associated with this permit the responsibility of the contractor? <b>Yes, but cost covered by City</b>
Item 6	Is there supposed to be a subsurface drainage system collecting water from the concrete spillway or will the sand be the only collecting agent? (10/NP4.2) <b>Sand will be the only collection agent. No additional subsurface drainage system is planned.</b>
Item 7	Please confirm it is the contractor's responsibility to install the ¾" water tap? <b>The City W&amp;S staff will install the ¾" tap at no cost to the contractor. The contractor is responsible for opening up and exposing the pipe for the W&amp;S staff to make the actual tap connection.</b>
Item 8	Please confirm the contractor will not be responsible for payment on any/all tap or development fees. <b>Tap fees and/or development fees will be paid for by the City.</b>
Item 9	Will the City of Greeley be providing the meter associated with the water line? <b>Yes, the City will provide the meter at our cost</b>
Item 10	The <i>Rock Check Dam</i> bid item is not shown in the plans. Will this item be required? <b>It is unlikely that this item would be used for this project but it is at the discretion of the contractor.</b>
Item 11	The <i>Silt Fence</i> item is listed as 1 LF. Is this intended to be a supplemental unit price or will the quantity be revised? <b>Supplemental unit price. Quantity will not be revised.</b>
Item 12	The <i>Soil Retention Blanket</i> item is listed as 1 SY. Is this intended to be a supplemental unit price or will the quantity be revised? <b>Supplemental unit price. Quantity will not be revised.</b>
Item 13	The bid from indicates a <i>Vehicle Tracking Pad</i> and <i>Prefabricated Vehicle Tracking Control</i> . Please confirm if both are necessary. <b>Both are not necessary. Contractor can make the decision as to which they would prefer to use.</b>
Item 14	It was mentioned at the pre-bid that alternates would be considered but not approved prior to the bid date. For the purpose of the bid, are we to assume all contractors should price specified products and alternates will only be considered after award? <b>This is accurate, add / alts will be considered based on the contractors bids</b>
Item 15	When will the one (1) year landscaping monitor period commence? Upon initial seeding/planting or substantial completion? (SSP-9) <b>Landscape monitoring period will commence upon Substantial Completion.</b>
Item 16	LEED Submittals are mentioned in the specs (32 15 43)- will these be required to accompany material submittals? <b>No LEED submittals are required.</b>



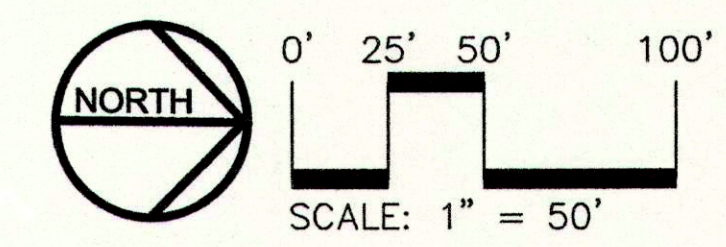
**LEGEND**

- INTAKE PIPE: CLASS 200 PVC
- MAINLINE PIPE: CLASS 200 PVC
- LATERAL PIPE TO SPRINKLERS: CLASS 160 PVC (1-INCH SIZE UNLESS OTHERWISE INDICATED)
- UNCONNECTED PIPE CROSSING
- POINT-OF-CONNECTION (P.O.C.) ASSEMBLY
- [M] MASTER VALVE ASSEMBLY
- [F] FLOW SENSOR ASSEMBLY
- [X] ISOLATION GATE VALVE ASSEMBLY
- [•] QUICK COUPLING VALVE ASSEMBLY
- [⊕] REMOTE CONTROL VALVE ASSEMBLY
- [■] AIR VACUUM RELIEF VALVE ASSEMBLY
- [•••] POP-UP SPRAY SPRINKLER: RAIN BIRD 1804-SAM-PRS W/ U15 SERIES MPR NOZZLE  
PRESSURE: 30 PSI RADIUS: 15 FEET  
FLOW (GPM): Q - 0.92 H - 1.85 F - 3.70
- [■] POP-UP ROTOR SPRINKLER: RAIN BIRD 7005 FC W/ #16 NOZZLE  
PRESSURE: 60 PSI RADIUS: 65 FEET FLOW: 15.9 GPM
- [▲] POP-UP ROTOR SPRINKLER: RAIN BIRD 7005 FC W/ #10 NOZZLE  
PRESSURE: 60 PSI RADIUS: 53 FEET FLOW: 10.1 GPM
- [▲] POP-UP ROTOR SPRINKLER: RAIN BIRD 7005 PC W/ #10 NOZZLE  
PRESSURE: 60 PSI RADIUS: 53 FEET FLOW: 10.1 GPM
- [■] POP-UP ROTOR SPRINKLER: RAIN BIRD 7005 PC W/ #16 NOZZLE  
PRESSURE: 60 PSI RADIUS: 65 FEET FLOW: 15.9 GPM
- [◇] POP-UP ROTOR SPRINKLER: RAIN BIRD 7005 PC W/ #14 NOZZLE  
PRESSURE: 60 PSI RADIUS: 61 FEET FLOW: 14.3 GPM
- [•] POP-UP ROTOR SPRINKLER: RAIN BIRD 3500 PC W/ #2 NOZZLE  
PRESSURE: 35 PSI RADIUS: 27 FEET FLOW: 1.69 GPM
- [P] IRRIGATION PUMP STATION

[A1] INDICATES CONTROLLER AND CONTROLLER STATION NUMBER  
[92] INDICATES LATERAL DISCHARGE IN GPM  
[2] INDICATES REMOTE CONTROL VALVE SIZE IN INCHES

**FLAG NOTES**

- 1 REFER TO PUMP STATION INSTALLATION DETAIL SHEET FOR CONNECTION OF IRRIGATION MAINLINE PIPE TO PUMP STATION DISCHARGE PIPE.
- 2 ROUTE POWER WIRES, FLOW SENSOR WIRES, MASTER VALVE WIRES AND CONTROL WIRES TO APPROXIMATE LOCATION SHOWN INSIDE THE PUMP STATION ENCLOSURE. COORDINATE EXACT LOCATION OF IRRIGATION CONTROLLER WITH OWNERS REPRESENTATIVE ON SITE PRIOR TO CONSTRUCTION. STUB-OUT A 10-FOOT LENGTH OF EACH WIRE COILED AND CLEARLY LABELED. THE CITY OF GREELEY WILL PROVIDE AND INSTALL THE IRRIGATION CONTROLLER AND MAKE NECESSARY CONNECTIONS.
- 3 INSTALL THREE SPARE CONTROL WIRES AND ONE SPARE COMMON WIRE FROM THE CONTROLLER TO EACH OF THE REMOTE CONTROL VALVE ASSEMBLIES INDICATED. WIRES ARE TO BE USED IN CASE OF CONTROL WIRE FAILURE. PROVIDE A 3-FOOT COILED LENGTH OF EACH SPARE WIRE IN ALL CONTROL VALVE BOXES.
- 4 IRRIGATION COMPONENTS MAY BE SHOWN OUTSIDE OF THE PLANTING AREA FOR CLARITY ONLY. INSTALL ALL IRRIGATION COMPONENTS IN LANDSCAPED AREA.
- 5 CAP MAINLINE AT APPROXIMATE LOCATION SHOWN. USE PVC SCH 40 SOLVENT WELD CAP. MARK LOCATION OF CAP WITH 12-INCH STANDARD VALVE BOX.
- 6 ROUTE PUMP STATION INTAKE PIPE FROM EXISTING DITCH HEAD GATE AT APPROXIMATE LOCATION SHOWN TO WET WELL. PROVIDE AND INSTALL ALL NECESSARY FITTINGS, ADAPTORS, OR OTHER ITEMS TO MAKE CONNECTIONS.
- 7 ROUTE 24 CONTROL WIRES AND ONE COMMON WIRE FROM THE IRRIGATION CONTROLLER TO THE STUB-OUT INDICATED. COIL 3- FEET OF SPARE WIRES AND PLACE IN VALVE BOX AT STUB-OUT END. COIL 5-FEET OF SPARE WIRES IN PUMP HOUSE. LABEL BOTH ENDS OF ALL WIRES.
- 8 BEGIN TRIANGULAR HEAD LAYOUT AT PROJECTED INTERSECTION OF SIDEWALKS INDICATED. SPACE HEADS ON AN EQUILATERAL TRIANGULATED LAYOUT AT 62.5- FEET.



DESIGNED BY: DMS  
DRAWN BY: JDL  
CHECKED BY: [Signature]  
REVISIONS:

**EAST MEMORIAL PARK  
GREELEY, COLORADO  
IRRIGATION PLAN**

**Aqua Engineering, Inc.**  
Irrigation System Design, Water Management,  
and Water Feature Engineering  
4803 Innovation Drive 80535  
Fort Collins, CO 9700 228-8668, FAX (970) 228-3855  
Phone (970) 228-8668, FAX (970) 228-3855

DATE: 04/03/01

SHEET: **IR-1**