

EXHIBIT 9
TRAFFIC CONTROL PLAN REVIEW FORM AND TCP's

CITY OF GREELEY / DEPARTMENT OF PUBLIC WORKS
TRAFFIC CONTROL PLAN REVIEW FORM

1001 9TH AVE
Office - (970) 336-4091
Cellular – (970) 539-6213
Fax – (970) 336-4142

INSTRUCTIONS: complete Section One and attach a work area traffic control plan. Plans must comply with the MUTCD Standards. Fax or return to the Traffic Operations Division office for review. A 72-hour notice is strongly recommended prior to construction. This form and the Traffic Control Plan shall be on the job site at all times.

SECTION ONE

DATE SUBMITTED: _____ PROJECT: _____
LOCATION OF CONSTRUCTION
WORK: _____
CONTRACTOR:

GENERAL AREA (BOUNDARIES) TO:

REQUESTED DATE (S) OF WORK FROM: _____ TO: _____ OVERNIGHT SETUP: YES _____ NO

REQUESTED TIME (S) FROM: _____ A.M. / P.M. TO: _____ A.M. / P. M.

TO BE COMPLETED BY TRAFFIC CONTROL COMPANIE(S)

TRAFFIC CONTROL COMPANY NAME: _____
24HR CONTACT PERSON: _____
COMPANY ADDRESS: _____
DAY PHONE: _____ EVENING PHONE: _____ CELLULAR: _____ FAX: _____
TO SET UP FOR: _____ ADDRESS _____
DATE REQUESTED ____/____/____

TO BE COMPLETED CITY DEPARTMENTS, CONTRACTOR, SUB-CONTRACTOR, CITIZEN:

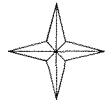
CONTRACTOR / SUBCONTRACTOR NAME _____
ADDRESS _____
PROJECT MANAGER _____ 24 HR _____
DAY PHONE _____ EVENING PHONE _____ CELLULAR _____ FAX _____

SECTION TWO






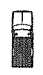
TRAFFIC CONTROL HAS BEEN: ACCEPTED () DENIED () PUBLIC WORKS PERMIT # _____
BEGINNING / ENDING DATE (S) SETUP
IS ACCEPTED FOR: FROM: ____/____/____ TO: ____/____/____ ONLY
ACCEPTED FOR: FROM: _____ AM PM TO: _____ AM PM
COMMENTS: _____

REVIEWED BY:
CITY OF GREELEY REPRESENTATIVE: _____ DATE: _____

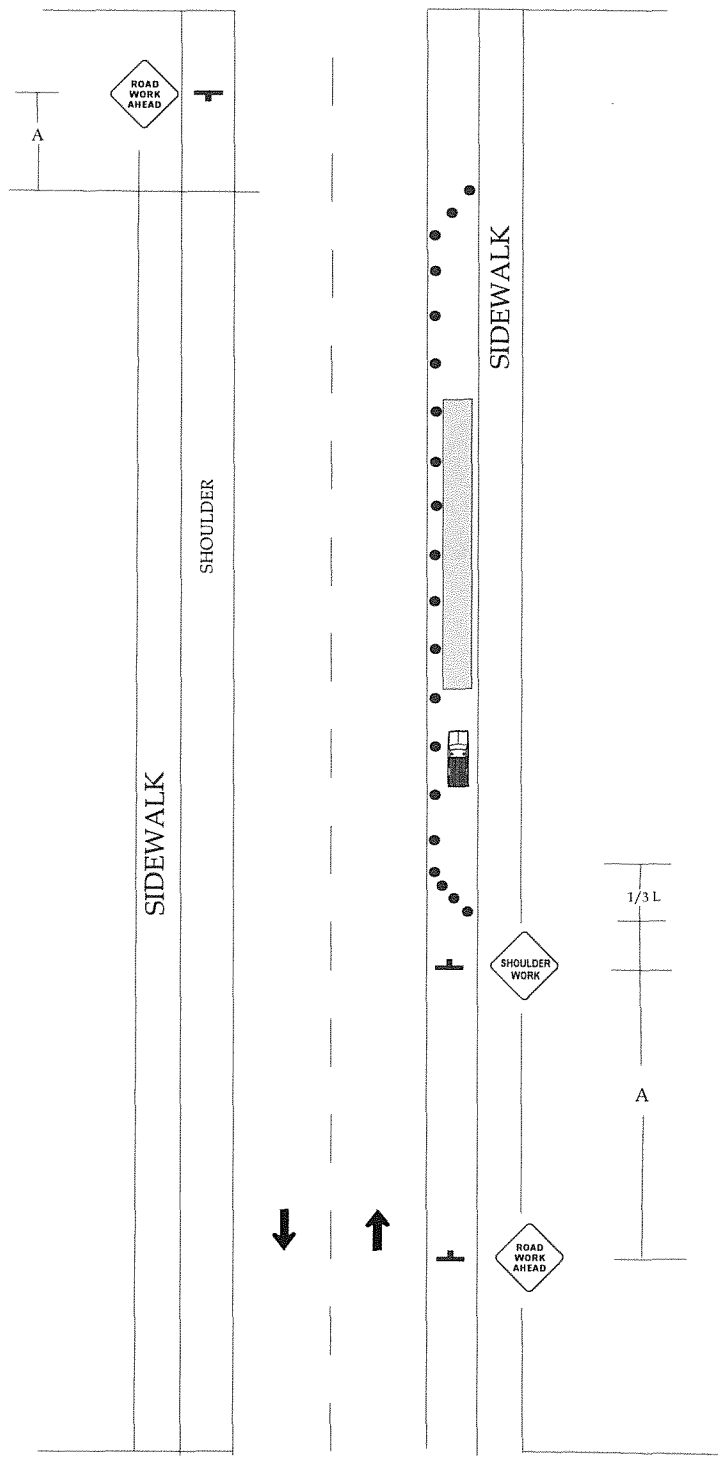
INDICATE NORTH



Legend

-  CHANNELIZING DEVICE
-  SIGN STAND
-  WORK AREA
-  DIRECTION OF TRAVEL
-  TRUCK MOUNTED IMPACT ATTENUATOR
-  WORK VEHICLE

* FOR SIGN SPACING AND TAPER LENGTHS REFER TO MUTCD



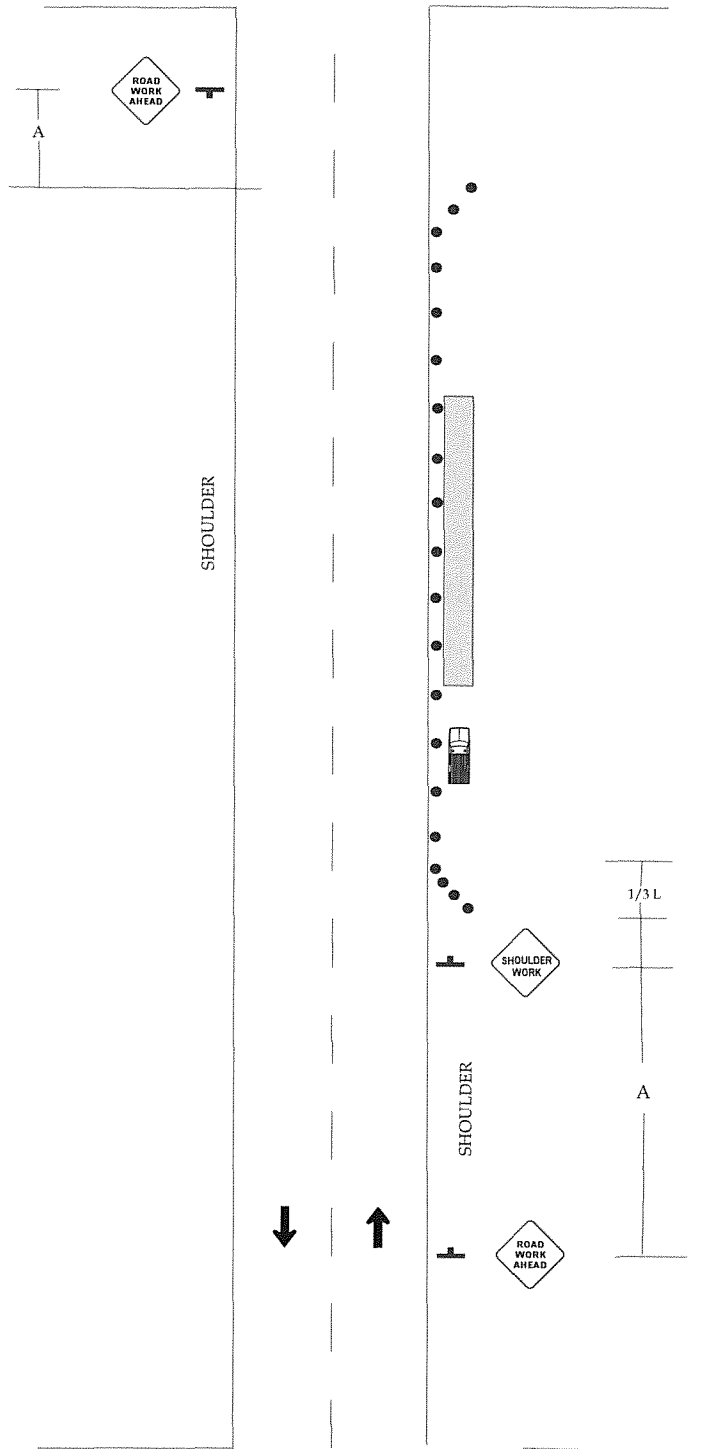
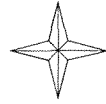
NOT TO SCALE
 MINIMUM SETUP STANDARD
 USE ADDITIONAL DEVICES
 WHEN NEEDED

TRAFFIC CONTROLS
 FOR
 STREET CONSTRUCTION, UTILITY WORK
 AND MAINTENANCE OPERATIONS







SHOULDER
 WORK
 WITH SIDEWALK

A-1

INDICATE NORTH



Legend

-  CHANNELIZING DEVICE
-  SIGN STAND
-  WORK AREA
-  DIRECTION OF TRAVEL
-  TRUCK MOUNTED IMPACT ATTENUATOR
-  WORK VEHICLE

* FOR SIGN SPACING AND TAPER LENGTHS REFER TO MUTCD

NOT TO SCALE

MINIMUM SETUP STANDARD
USE ADDITIONAL DEVICES
WHEN NEEDED







TRAFFIC CONTROLS
FOR
STREET CONSTRUCTION, UTILITY WORK
AND MAINTENANCE OPERATIONS

SHOULDER
WORK

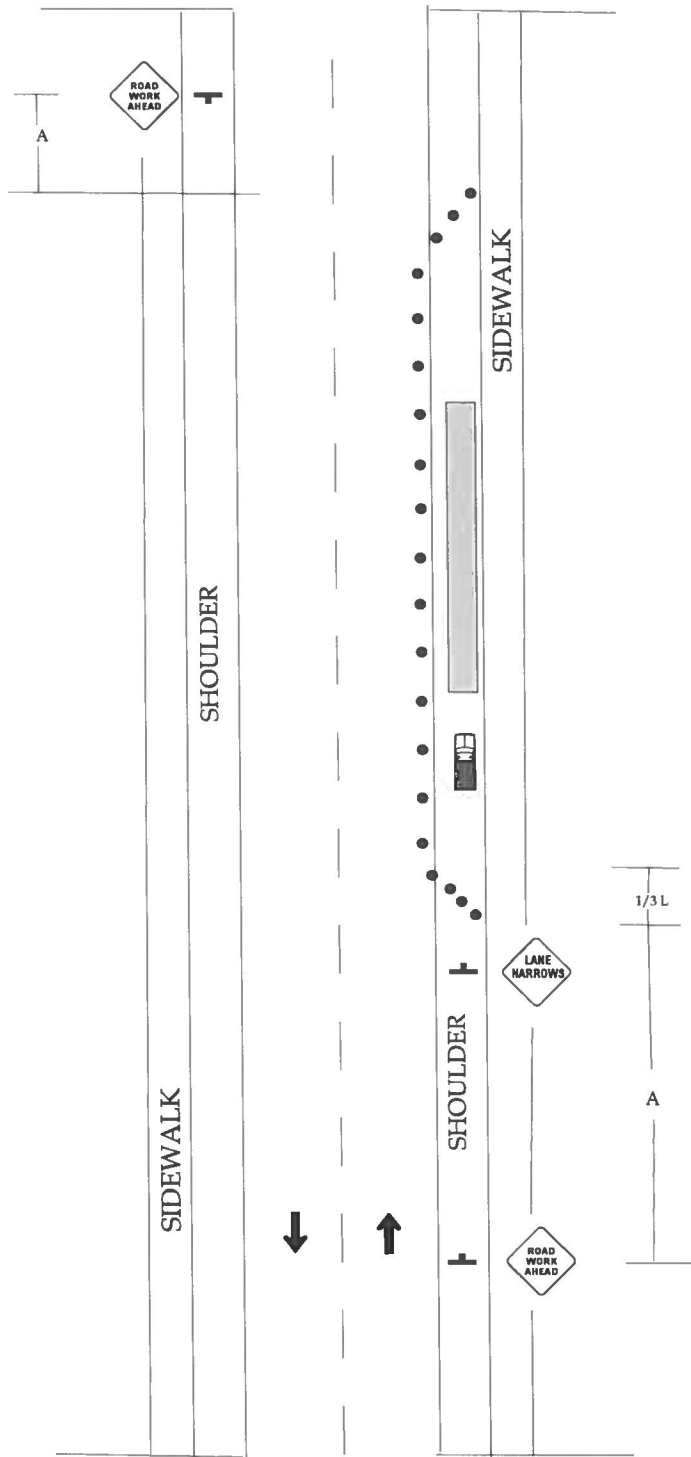
INDICATE NORTH



Legend

-  CHANNELIZING DEVICE
-  SIGN STAND
-  WORK AREA
-  DIRECTION OF TRAVEL
-  TRUCK MOUNTED IMPACT ATTENUATOR
-  WORK VEHICLE

* FOR SIGN SPACING AND TAPER LENGTHS REFER TO MUTCD



NOT TO SCALE
 MINIMUM SETUP STANDARD
 USE ADDITIONAL DEVICES
 WHEN NEEDED







TRAFFIC CONTROLS
 FOR
 STREET CONSTRUCTION, UTILITY WORK
 AND MAINTENANCE OPERATIONS

SHOULDER WORK
 MINOR ENCROACHMENT

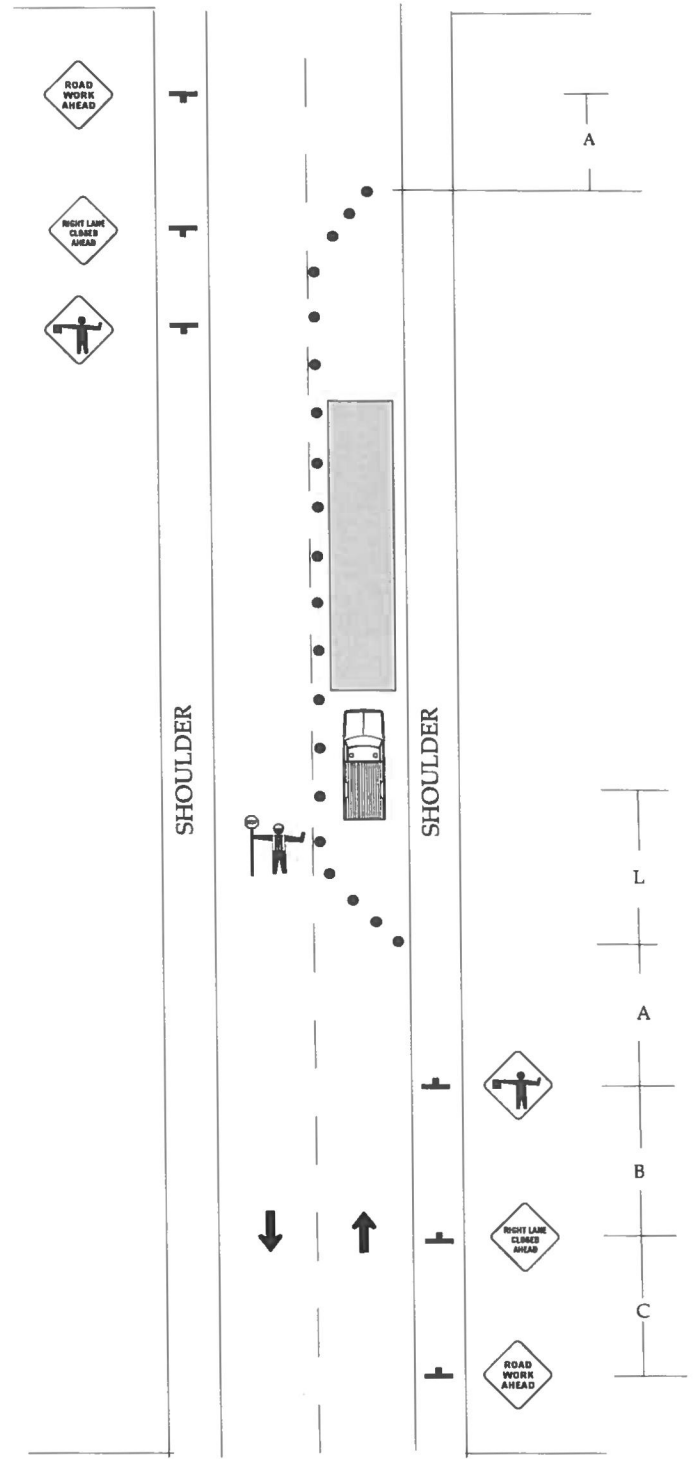
INDICATE NORTH



Legend

-  CHANNELIZING DEVICE
-  SIGN STAND
-  WORK AREA
-  DIRECTION OF TRAVEL
-  TRUCK MOUNTED IMPACT ATTENUATOR
-  WORK VEHICLE

* FOR SIGN SPACING AND TAPER LENGTHS REFER TO MUTCD



NOT TO SCALE
 MINIMUM SETUP STANDARD
 USE ADDITIONAL DEVICES
 WHEN NEEDED







**TRAFFIC CONTROLS
 FOR
 STREET CONSTRUCTION, UTILITY WORK
 AND MAINTENANCE OPERATIONS**

**TWO WAY TRAFFIC
 SINGLE LANE
 CLOSURE**

INDICATE NORTH

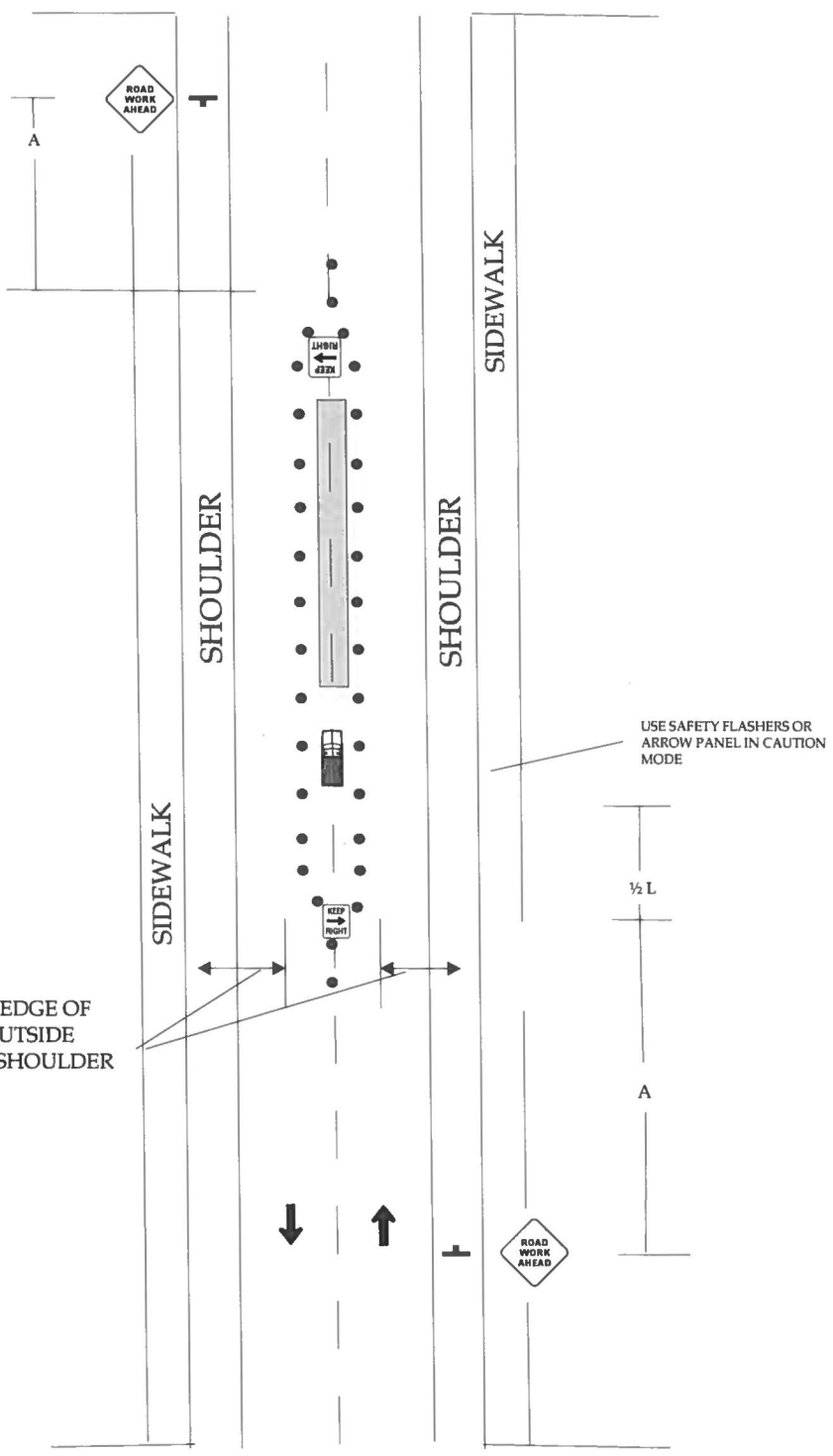


Legend

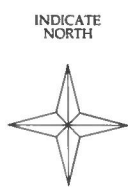
-  CHANNELIZING DEVICE
-  SIGN STAND
-  WORK AREA
-  DIRECTION OF TRAVEL
-  TRUCK MOUNTED IMPACT ATTENUATOR
-  WORK VEHICLE

* FOR SIGN SPACING AND TAPER LENGTHS REFER TO MUTCD

10' MINIMUM TO EDGE OF PAVEMENT OR OUTSIDE EDGE OF PAVED SHOULDER



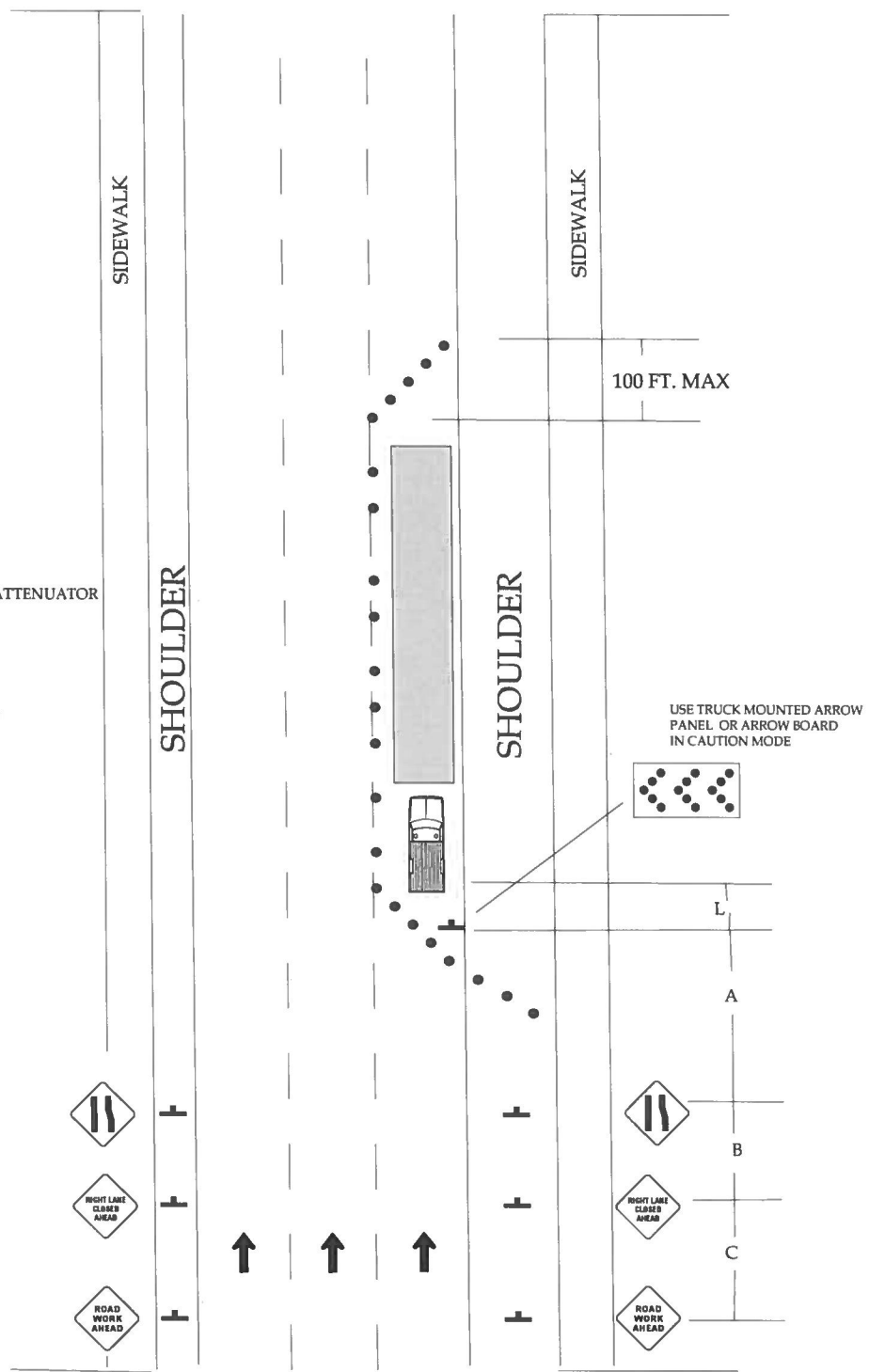
| | | |
|----------------------------------------------------------------------------------------------|------------------------------------------------------------------------------------------------------|--------------------------------------------------|
| <p>NOT TO SCALE</p> <p>MINIMUM SETUP STANDARD USE ADDITIONAL DEVICES WHEN NEEDED</p> | <p>TRAFFIC CONTROLS FOR STREET CONSTRUCTION, UTILITY WORK AND MAINTENANCE OPERATIONS</p> | <p>WORK IN CENTER OF TWO-WAY TRAFFIC</p> |
|----------------------------------------------------------------------------------------------|------------------------------------------------------------------------------------------------------|--------------------------------------------------|



Legend

- CHANNELIZING DEVICE
- ⊕ SIGN STAND
- WORK AREA
- ↑ DIRECTION OF TRAVEL
- ▣ TRUCK MOUNTED IMPACT ATTENUATOR
- 🚚 WORK VEHICLE

* FOR SIGN SPACING AND TAPER LENGTHS REFER TO MUTCD

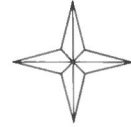


NOT TO SCALE
 MINIMUM SETUP STANDARD
 USE ADDITIONAL DEVICES
 WHEN NEEDED

TRAFFIC CONTROLS
 FOR
 STREET CONSTRUCTION, UTILITY WORK
 AND MAINTENANCE OPERATIONS

ONE WAY TRAFFIC
 OUTSIDE LANE CLOSURE

INDICATE NORTH

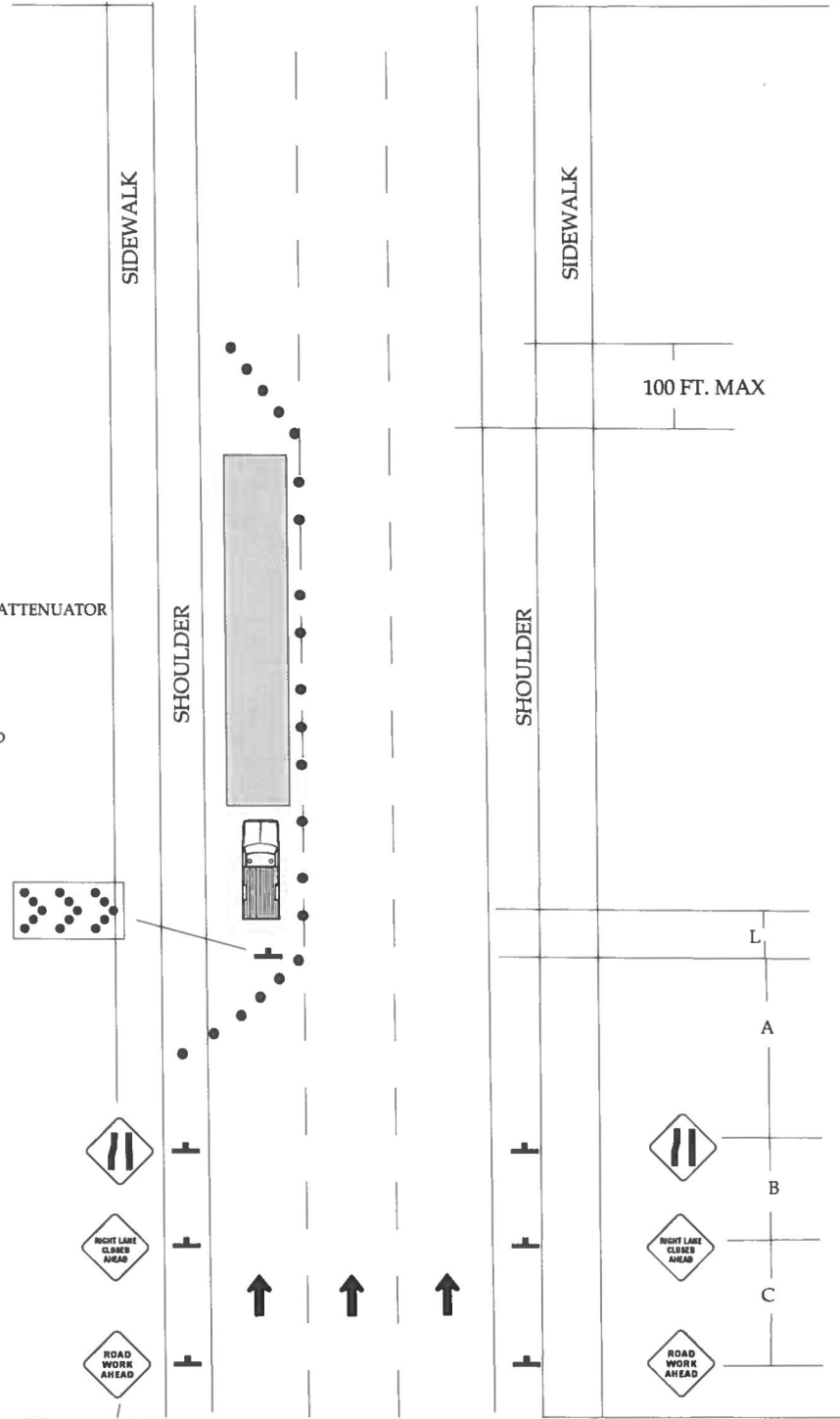


Legend

- CHANNELIZING DEVICE
- ⊥ SIGN STAND
- WORK AREA
- ↑ DIRECTION OF TRAVEL
- ▤ TRUCK MOUNTED IMPACT ATTENUATOR
- 🚚 WORK VEHICLE

* FOR SIGN SPACING AND TAPER LENGTHS REFER TO MUTCD

USE TRUCK MOUNTED ARROW PANEL OR ARROW BOARD IN CAUTION MODE

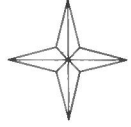


NOT TO SCALE
 MINIMUM SETUP STANDARD
 USE ADDITIONAL DEVICES
 WHEN NEEDED

TRAFFIC CONTROLS
 FOR
 STREET CONSTRUCTION, UTILITY WORK
 AND MAINTENANCE OPERATIONS

ONE WAY TRAFFIC
 OUTSIDE LANE CLOSURE

INDICATE NORTH

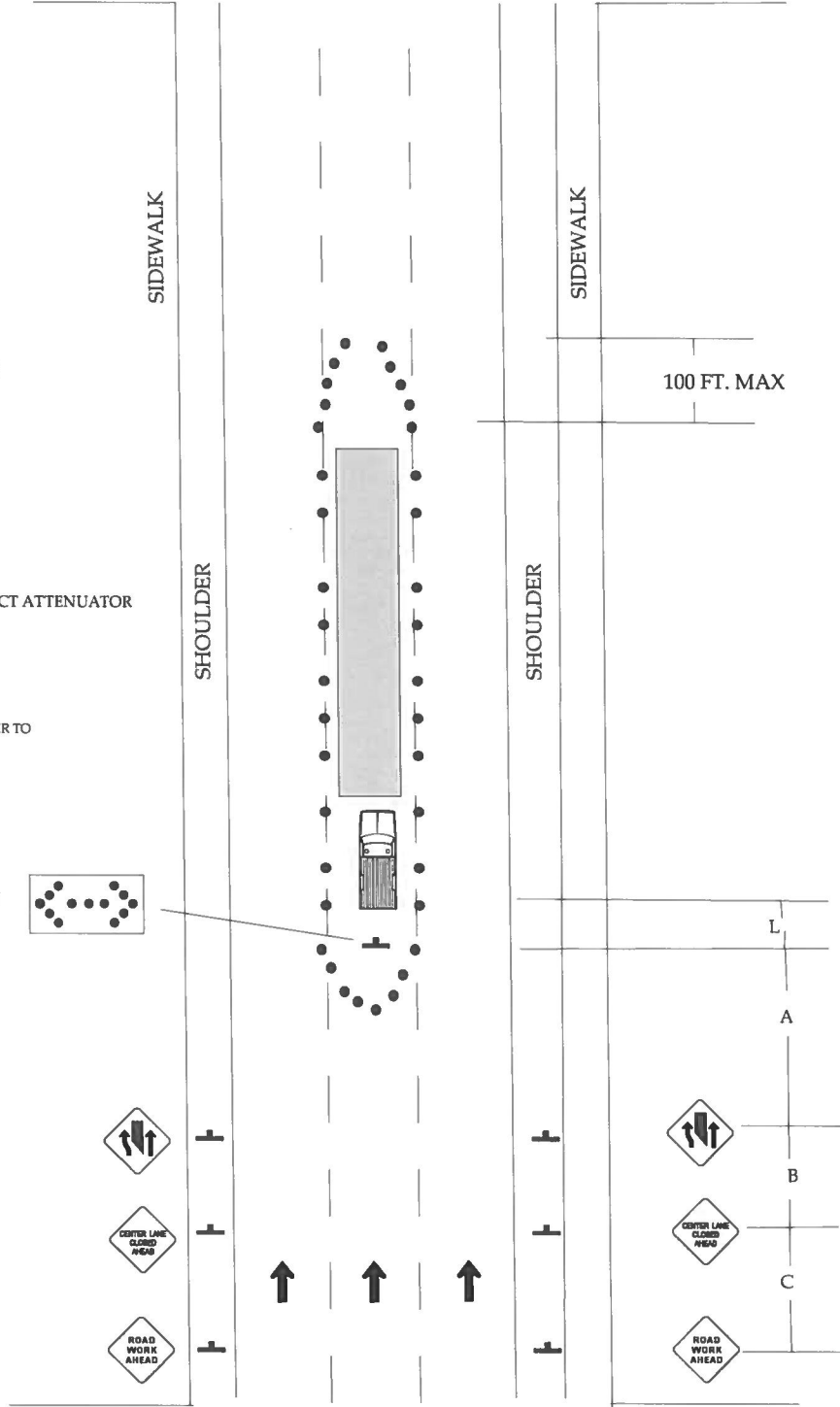


Legend

- CHANNELIZING DEVICE
- ⊥ SIGN STAND
- WORK AREA
- ↑ DIRECTION OF TRAVEL
- ▢ TRUCK MOUNTED IMPACT ATTENUATOR
- 🚚 WORK VEHICLE

* FOR SIGN SPACING AND TAPER LENGTHS REFER TO MUTCD

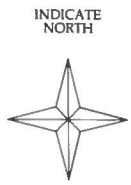
USE TRUCK MOUNTED ARROW PANEL OR ARROW BOARD IN CAUTION MODE



NOT TO SCALE
 MINIMUM SETUP STANDARD
 USE ADDITIONAL DEVICES
 WHEN NEEDED

TRAFFIC CONTROLS
 FOR
 STREET CONSTRUCTION, UTILITY WORK
 AND MAINTENANCE OPERATIONS

ONE WAY TRAFFIC
 CENTER LANE CLOSURE

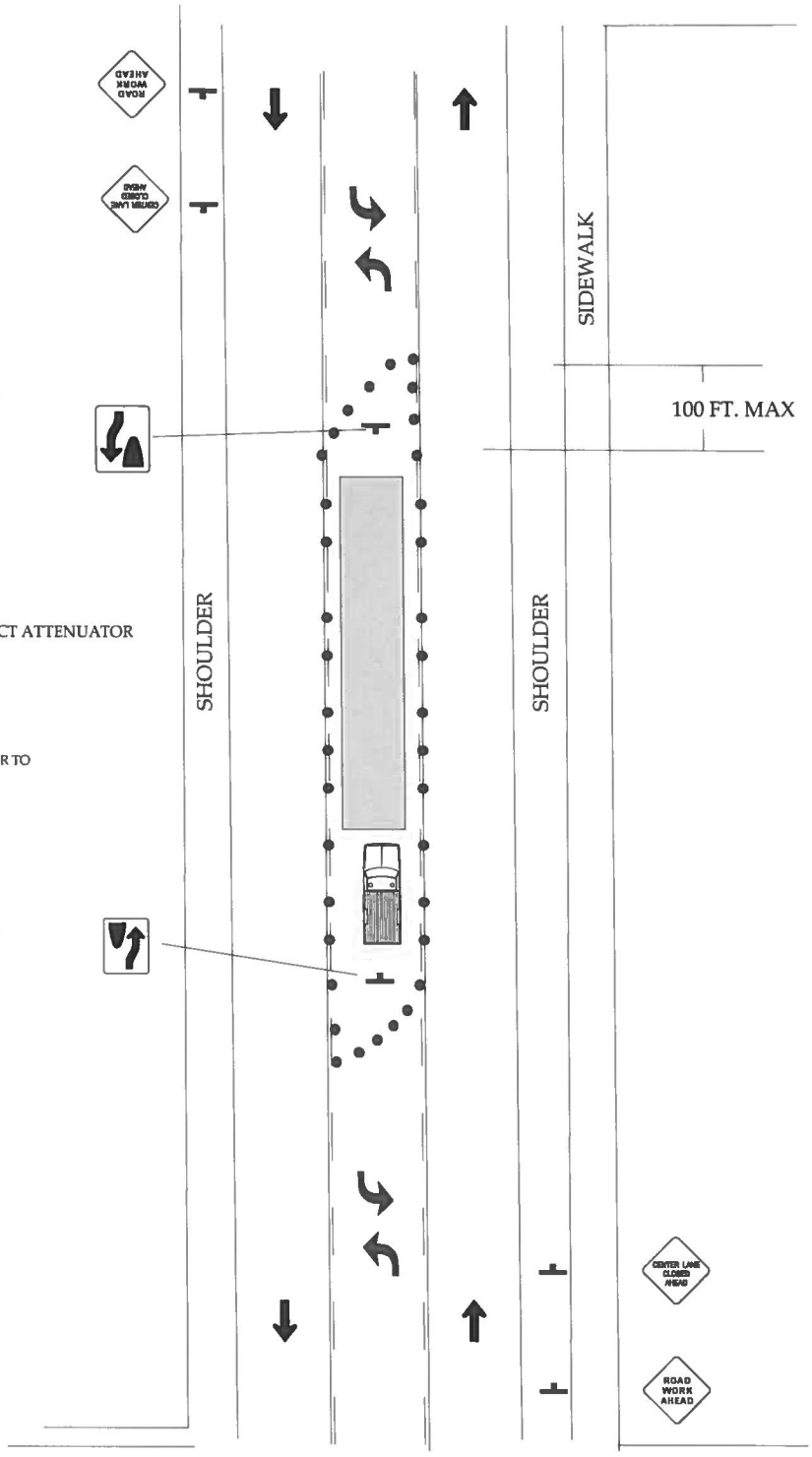


Legend

- CHANNELIZING DEVICE
- ⊥ SIGN STAND
- ▭ WORK AREA
- ↑ DIRECTION OF TRAVEL
- ▭ TRUCK MOUNTED IMPACT ATTENUATOR
- 🚚 WORK VEHICLE

* FOR SIGN SPACING AND TAPER LENGTHS REFER TO MUTCD

USE TRUCK MOUNTED ARROW PANEL OR ARROW BOARD IN CAUTION MODE



NOT TO SCALE
 MINIMUM SETUP STANDARD
 USE ADDITIONAL DEVICES
 WHEN NEEDED







TRAFFIC CONTROLS
 FOR
 STREET CONSTRUCTION, UTILITY WORK
 AND MAINTENANCE OPERATIONS

TWO WAY TRAFFIC
 CENTERLANE CLOSURE

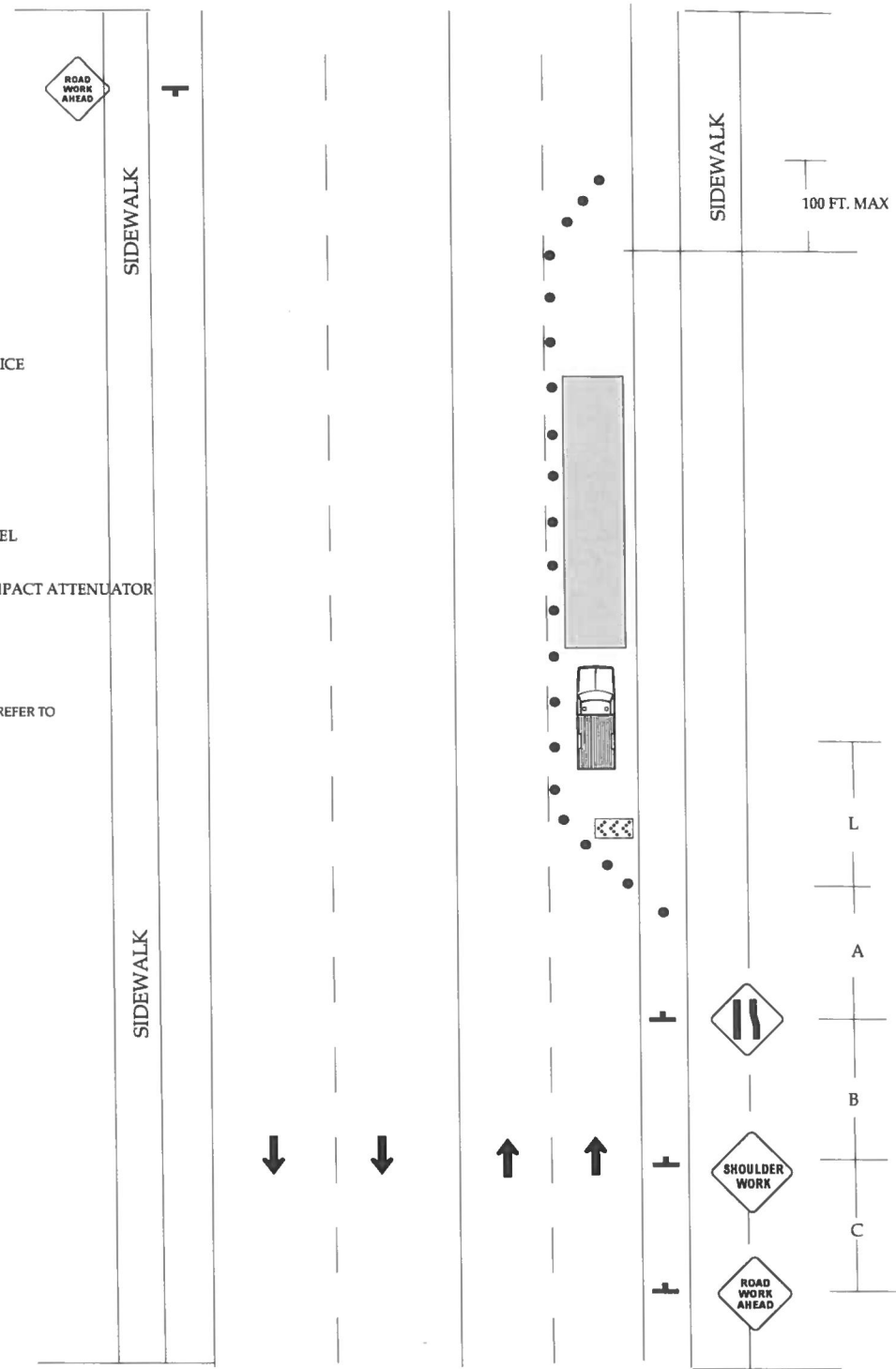
INDICATE NORTH



Legend

-  CHANNELIZING DEVICE
-  SIGN STAND
-  WORK AREA
-  DIRECTION OF TRAVEL
-  TRUCK MOUNTED IMPACT ATTENUATOR
-  WORK VEHICLE

* FOR SIGN SPACING AND TAPER LENGTHS REFER TO MUTCD

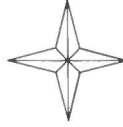


NOT TO SCALE
 MINIMUM SETUP STANDARD
 USE ADDITIONAL DEVICES
 WHEN NEEDED







TRAFFIC CONTROLS
 FOR
 STREET CONSTRUCTION, UTILITY WORK
 AND MAINTENANCE OPERATIONS

FOUR LANE TRAFFIC
 TWO WAY
 SINGLE LANE CLOSURE

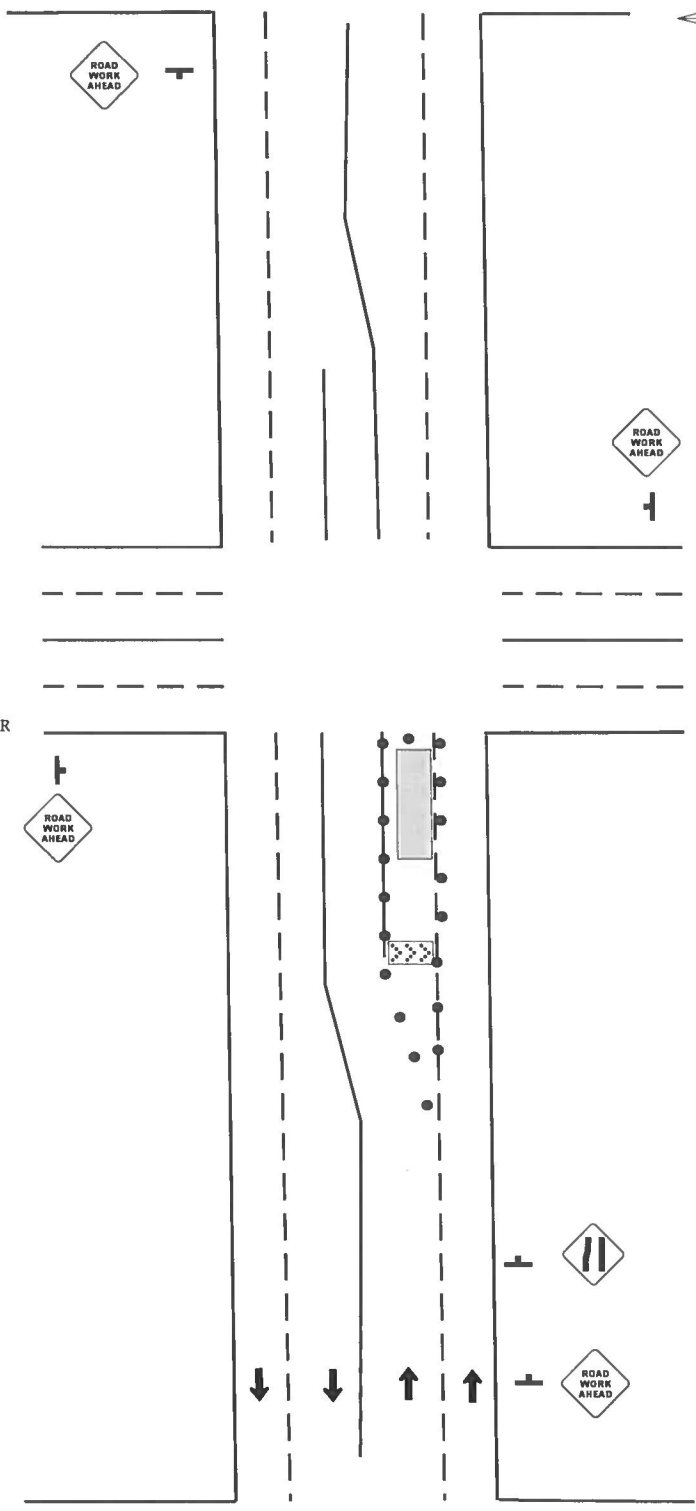
INDICATE NORTH



Legend

-  CHANNELIZING DEVICE
-  SIGN STAND
-  WORK AREA
-  DIRECTION OF TRAVEL
-  TRUCK MOUNTED IMPACT ATTENUATOR (OPTIONAL)
-  WORK VEHICLE

* FOR SIGN SPACING AND TAPER LENGTHS REFER TO MUTCD









NOT TO SCALE
 MINIMUM SETUP STANDARD
 USE ADDITIONAL DEVICES
 WHEN NEEDED

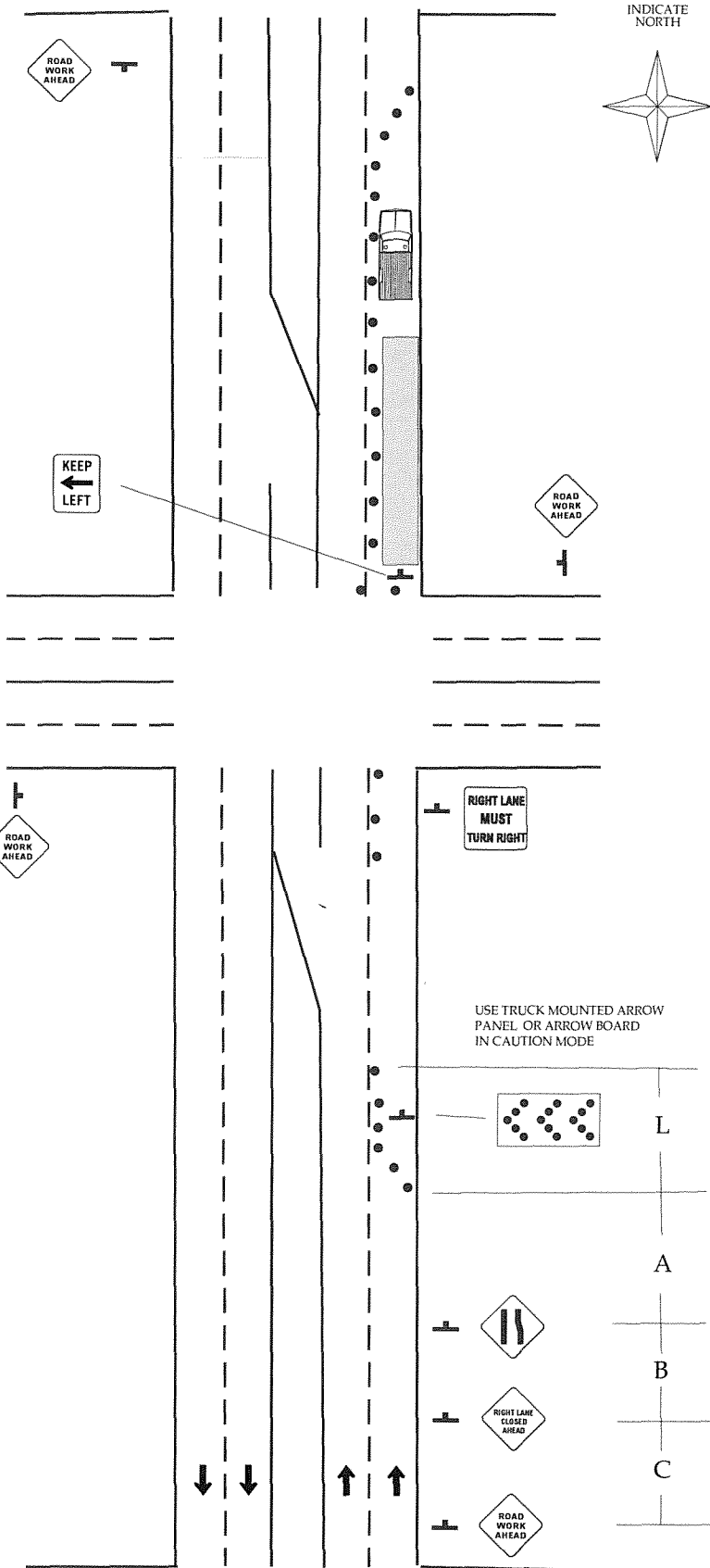
TRAFFIC CONTROLS
 FOR
 STREET CONSTRUCTION, UTILITY WORK
 AND MAINTENANCE OPERATIONS

CENTER LANE
 CLOSURE
 AT
 INTERSECTION

Legend

-  CHANNELIZING DEVICE
-  SIGN STAND
-  WORK AREA
-  DIRECTION OF TRAVEL
-  TRUCK MOUNTED IMPACT ATTENUATOR (OPTIONAL)
-  WORK VEHICLE

* FOR SIGN SPACING AND TAPER LENGTHS REFER TO MUTCD

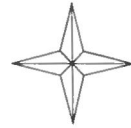


NOT TO SCALE
MINIMUM SETUP STANDARD
USE ADDITIONAL DEVICES
WHEN NEEDED

TRAFFIC CONTROLS
FOR
STREET CONSTRUCTION, UTILITY WORK
AND MAINTENANCE OPERATIONS

RIGHT LANE CLOSURE
FAR SIDE OF
INTERSECTION

INDICATE
NORTH



Legend



CHANNELIZING DEVICE



SIGN STAND



WORK AREA



DIRECTION OF TRAVEL

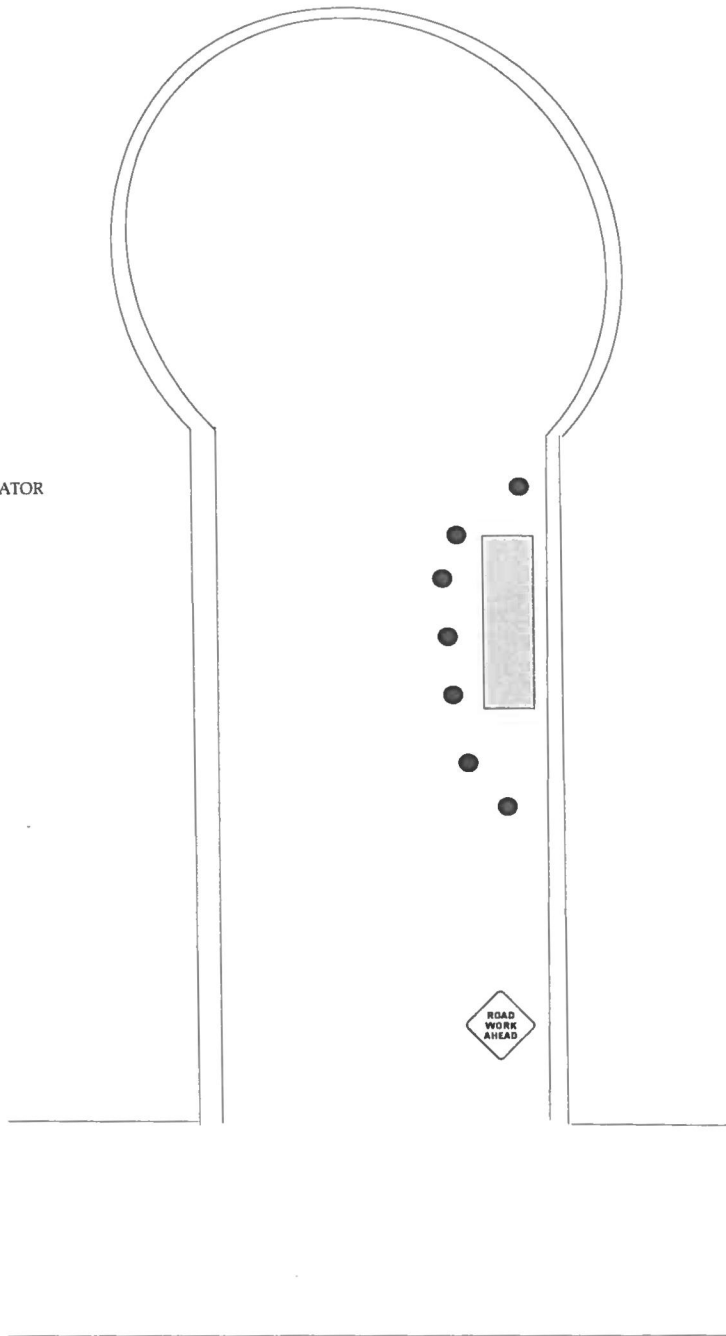


TRUCK MOUNTED IMPACT ATTENUATOR
(OPTIONAL)



WORK VEHICLE

* FOR SIGN SPACING AND TAPER LENGTHS REFER TO
MUTCD



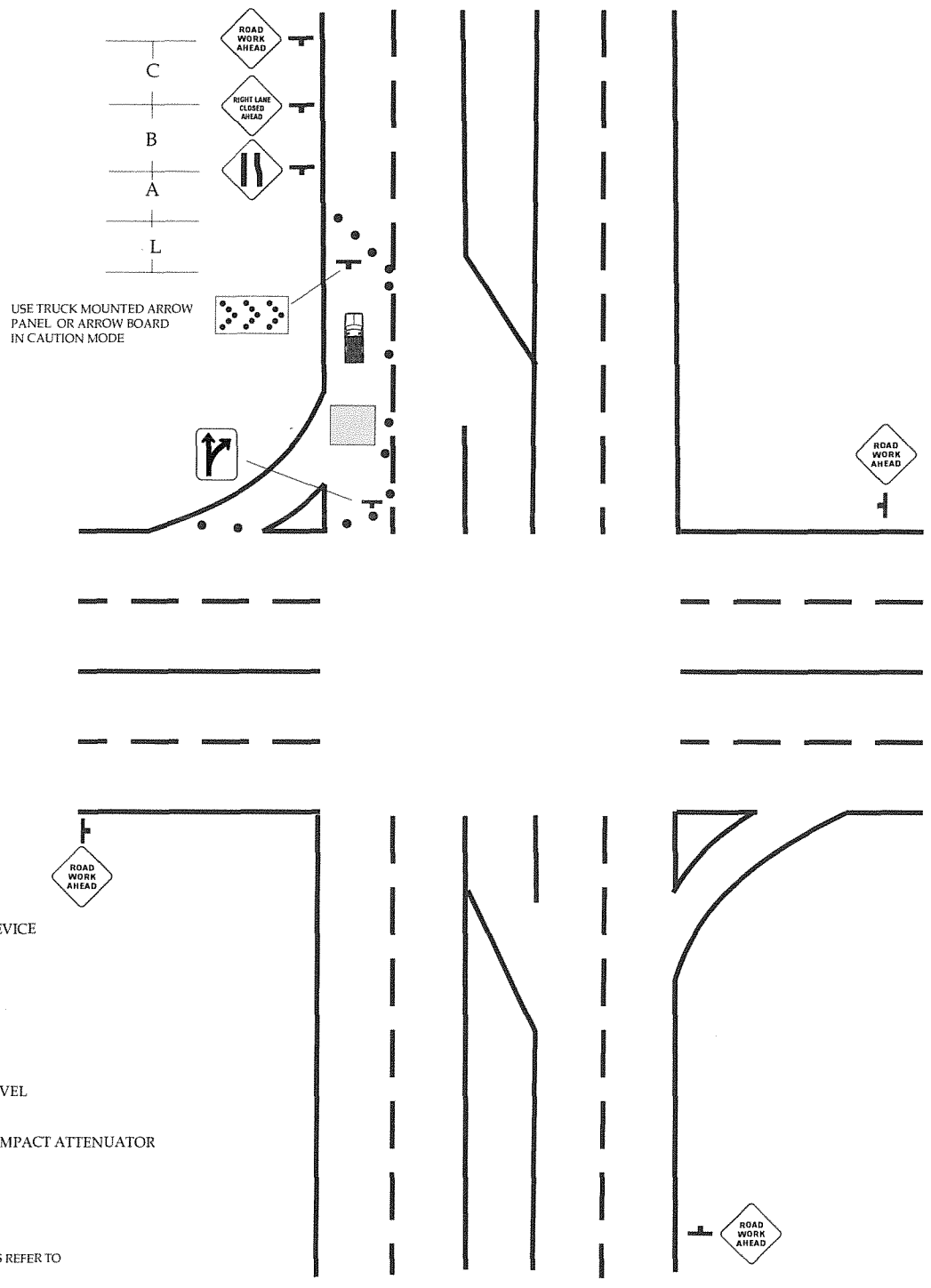
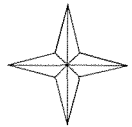
NOT TO SCALE

MINIMUM SETUP STANDARD
USE ADDITIONAL DEVICES
WHEN NEEDED






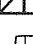
TRAFFIC CONTROLS
FOR
STREET CONSTRUCTION, UTILITY WORK
AND MAINTENANCE OPERATIONS

CUL-DE-SAC
WORK

INDICATE NORTH









Legend

-  CHANNELIZING DEVICE
-  SIGN STAND
-  WORK AREA
-  DIRECTION OF TRAVEL
-  TRUCK MOUNTED IMPACT ATTENUATOR (OPTIONAL)
-  WORK VEHICLE

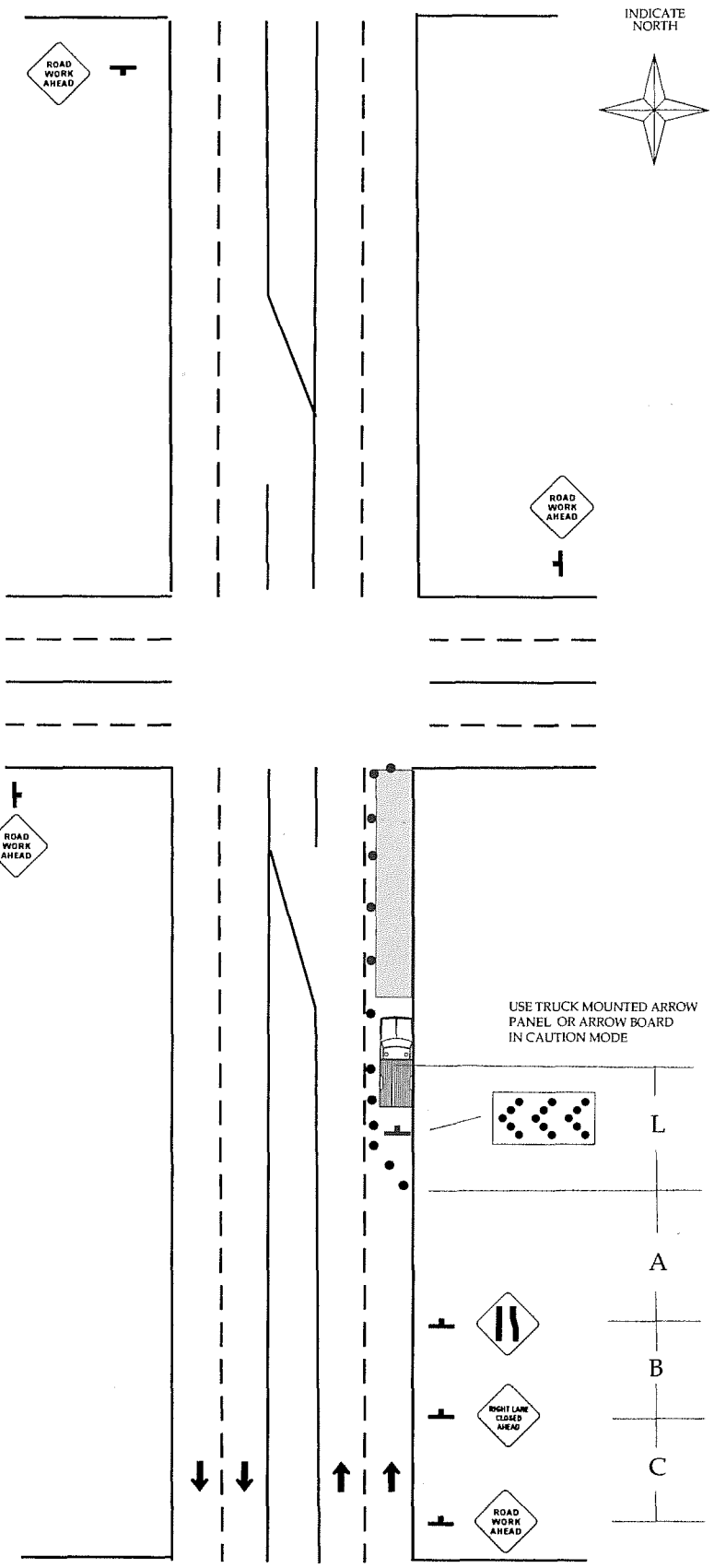
* FOR SIGN SPACING AND TAPER LENGTHS REFER TO MUTCD

| | | |
|----------------------------------------------------------------------------------------------|------------------------------------------------------------------------------------------------------|--------------------------------------------|
| <p>NOT TO SCALE</p> <p>MINIMUM SETUP STANDARD USE ADDITIONAL DEVICES WHEN NEEDED</p> | <p>TRAFFIC CONTROLS FOR STREET CONSTRUCTION, UTILITY WORK AND MAINTENANCE OPERATIONS</p> | <p>RIGHT LANE AND TURN BAY CLOSURE</p> |
|----------------------------------------------------------------------------------------------|------------------------------------------------------------------------------------------------------|--------------------------------------------|

Legend

-  CHANNELIZING DEVICE
-  SIGN STAND
-  WORK AREA
-  DIRECTION OF TRAVEL
-  TRUCK MOUNTED IMPACT ATTENUATOR (OPTIONAL)
-  WORK VEHICLE

* FOR SIGN SPACING AND TAPER LENGTHS REFER TO MUTCD

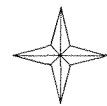


NOT TO SCALE
 MINIMUM SETUP STANDARD
 USE ADDITIONAL DEVICES
 WHEN NEEDED






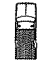
TRAFFIC CONTROLS
 FOR
 STREET CONSTRUCTION, UTILITY WORK
 AND MAINTENANCE OPERATIONS

RIGHT LANE CLOSURE
 NEAR SIDE OF
 INTERSECTION

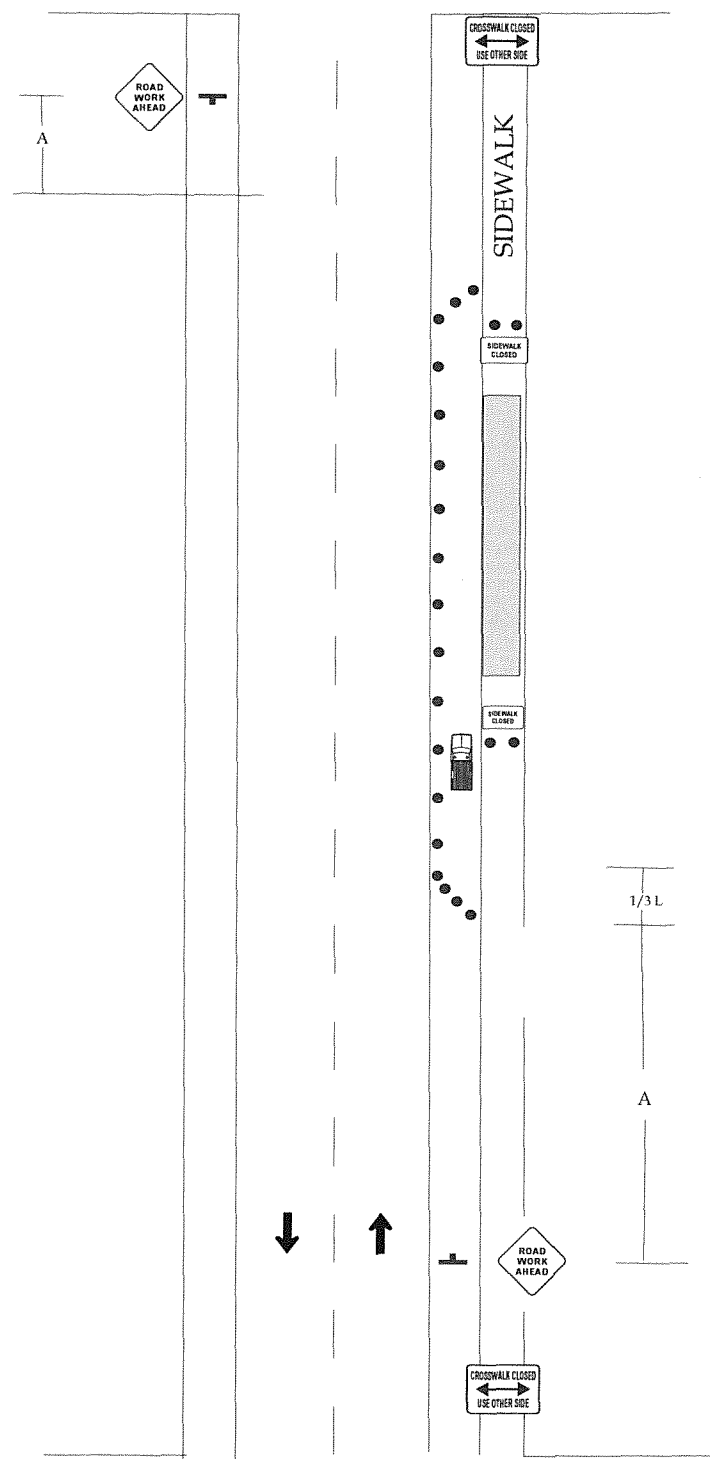
INDICATE NORTH



Legend

-  CHANNELIZING DEVICE
-  SIGN STAND
-  WORK AREA
-  DIRECTION OF TRAVEL
-  TRUCK MOUNTED IMPACT ATTENUATOR
-  WORK VEHICLE

* FOR SIGN SPACING AND TAPER LENGTHS REFER TO MUTCD



NOT TO SCALE
 MINIMUM SETUP STANDARD
 USE ADDITIONAL DEVICES
 WHEN NEEDED

TRAFFIC CONTROLS
 FOR
 STREET CONSTRUCTION, UTILITY WORK
 AND MAINTENANCE OPERATIONS

SHOULDER CLOSURE
 WITH
 SIDEWALK CLOSURE