



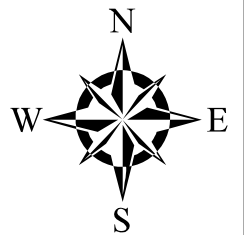
# The City of Greeley Control Network

GIS Reference No: 10

Pin ID: Unknown

Cap ID: 14

State/County: CO/Weld



**Horizontal Datum -** NAD83/92 - HARN (High Accuracy Reference Network) Based  
(SPCS) State Plane Coordinate System Colorado North Zone 0501 US Survey Feet  
Ellipsoid GRS 80 - (Geodetic Referenc System of 1980)

**Vertical Datum -** NAVD 88 - (North American Vertical Datum of 1988)

## Surveyed Location & Height - US Feet (Adjusted)

NAVD88 Elev: 4,796.89

NAVD29 Elev: 4,793.91

Northing 83 Feet: ----

Easting 83 Feet: ----

## GIS Map Position -

(GIS position values for X, Y and Lat, Long are derived from desktop mapping product; they do not guarantee accuracy and should not be used for engineering purposes.)

GIS X Coordinate: 3,204,836.57

GIS Y Coordinate: 1,397,119.17

Latitude: 40d25'16.18"N

Longitude: 104d45'51.44"W

## Dates -

Date of Install: 00/01/2002

Date of Survey: 00/23/2002

Date of Recovery: 00/23/2002

## Types -

Monument Type: Aluminum 3 1/4" Disk

Benchmark Type: City Benchmark

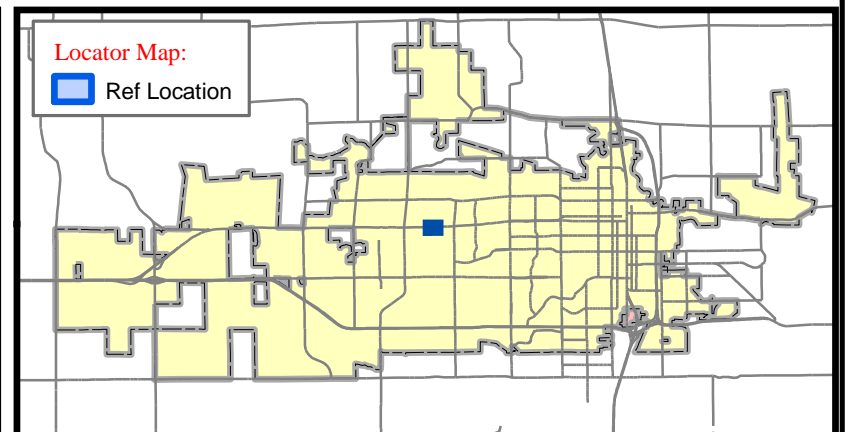
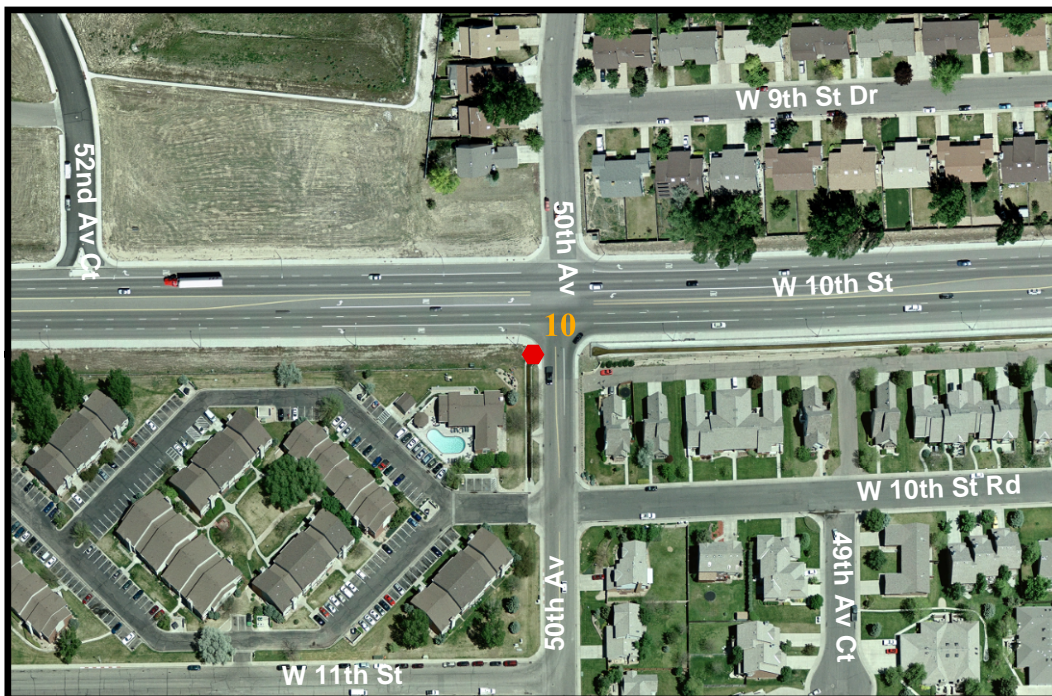
## NGVD 29 to NAVD 88 Conversion -

Scale Factor: 0.999961257

Combined Factor: 0.999731868

Convergence: 0 28' 31.32088"

Scale: 1 inch equals 300 feet



- |                                 |                        |
|---------------------------------|------------------------|
| CITY BENCHMARK                  | US GEOLOGICAL SURVEY   |
| COLORADO DEPT OF TRANSPORTATION | QUARTER QUARTER        |
| HARN POINT                      | QUARTER SECTION CORNER |
| NATIONAL GEODETIC SURVEY        | SECTION CORNER         |

**Contact:** ----- The City of Greeley GIS Program, 1010 6th St, Greeley, CO 80631, (970) 350-9787

**Description:** Located on the south west corner of the intersection of 10th St and 50th Ave.

**Publication Date:** 1/24/2007 12:00:00 AM